

BULLETIN

of the

AMERICAN DAHLIA SOCIETY

NOVEMBER — 1959

Published Quarterly — Third Quarter



Visitors at Pittsburgh Mid-West Show

These dahlia fans were "shot" by the editor in the Garden of Mr. and Mrs. Wm. Koenig, 2309 Bethel Church Road, where a fine lunch was served to the some 150 guests on the Garden Bus Tour on Sept. 11th. Mr. Koenig is President of Pittsburgh Dahlia Society. Front Row: Dewey Mohr, N. Y., P. A. Donnelly, Charleston, W. Va., Dr. C. H. Rike, Birmingham, Ala., C. F. Lasch, Euclid, Ohio. Back Row: C. M. Diffenderffer, Baltimore, 'Drew Mulcahy, N. Y. and Roy Webb, Scranton, Pa.

REES'S 1960 INTRODUCTIONS

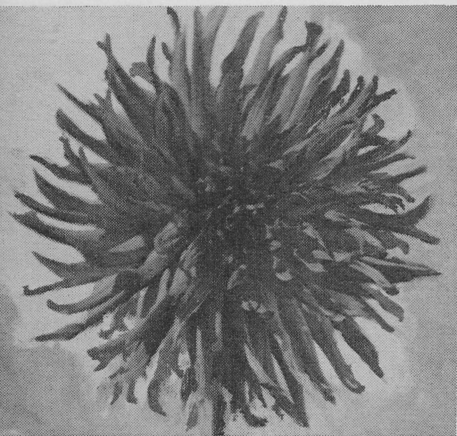
Priced So Everyone Can Grow Them

I am offering to Bulletin readers two winners at the A. D. S. Trial Gardens and at the shows. Both are listed on Roy Webb's Review.

So that more people can grow them, I am offering at most reasonable prices, these 1960 introductions.

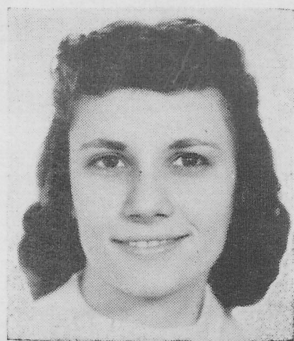
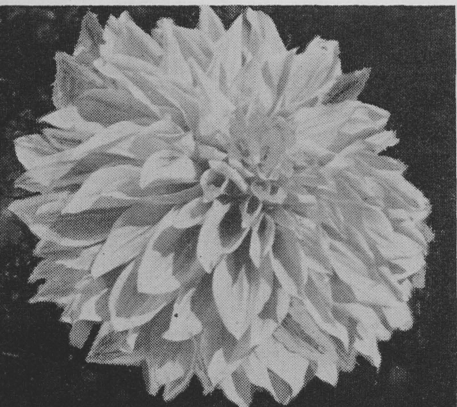
REES BEAUTY

This is a "B" size, Dark Blend, French Rose on Mimosa Yellow, size 8½ by 4½ inches. Scored



Above: REES BEAUTY, B — St. C.

Below: LAURA REES, A — I. D.



Laura Rees — in Person

A. D. S. Certificates at East Lansing, score 85, and 85 also at Cincinnati, 1959. Won American Home Achievement Medal at St. Louis Show. Bush 4 ft. and a profuse bloomer. In Roy Webb's Review. Clump, \$12.50; Root, \$5.00, Net. Rooted Cutting, \$2.00.

LAURA REES

This "A" I. D., is a sport of the well known "Arthur Godfrey." Color is Purple with light purple shadings. Size 10 by 6 inches and larger. Won A. D. S. Certificate, East Lansing, 1959, score 85. In 1958 it scored 85.5 at Cincinnati and 85 at Atlanta Trial Gardens. It will win the "Largest in Show" without much effort. In Roy Webb's Review. Clump, \$12.50 Net. Single root, \$5.00, Net. Rooted Cutting, \$2.00.

JIMMIE REES

Our former introduction is still winning. Its an "A" F. D. Color Flame Red. Profuse bloomer. In Roy Webb's Review. Single Root, \$3.50; Rooted Cutting, \$2.00.

Catalogue sent FREE on Request.

REES DAHLIA GARDEN

Tilden, Illinois

Advertising Index

	Page
Ballego	55
Fa. D. Bruidegom	35
Comstock Dahlia Gardens (Back Cover)	
Mrs. Emelene M. Cole	28
Dahlidel (Center Spread)	30-31
DEE CEE DAHLIAS	26
Wm. Du Ruyter	35
Hanna Dahlia Gardens	43
Jas Mar Dahlia Gardens	29
Nat C. Lundgren	25
Pennypack Gardens	35
Albert Parrella	59
Rees Dahlia Garden	2
H. H. Robens	41
Ruschmohr Dahlia Gardens	23
Summit Gardens	33
Swan Island Dahlias	27

ADVERTISING RATES

Minimum space accepted one-eighth page.
See Special Discounts for 2 and 4 consecutive insertions below.

	One Issue	Two Issues	Four Issues
Full Page.....	\$ 80.00	\$145.00	\$280.00
Half Page.....	50.00	90.00	172.50
Quarter Page.....	35.00	60.00	115.00
Eighth Page.....	20.00	35.00	67.00
Center Spread (2 Pages).....	165.00	300.00	590.00

When ordering 2 or 4 consecutive issues, advertiser will be billed for all insertions ordered, within 10 days of publication of the first one. The entire amount for all advertisements ordered will be immediately due, without further discounts, unless credit has been previously established, and payments arranged with Treasurer Harry Dreyer.

SPACE SIZES

Full Page	4½ by 7¾ inches
Half Page	4½ by 3¾ inches
Quarter Page	2½ by 3½ inches
Eighth Page	2½ by 1¾ inches

CLOSING DATES FOR ADVERTISING

February—JAN. 15; May—APR. 15;
August—JULY 15; November—OCT. 15.

Second Class Postage Paid at the Post Office at New York, N. Y., under Act of March 3rd, 1879.

BULLETIN of the American Dahlia Society

SERIES XXXII, No. 4

Contents for November 1959

	Page
A. D. S. - N. J. 1959 Show	4-6
1959 Trial Garden Report	7-13
1959 Seedling Sweepstakes	14-15
A. D. S. Annual Meeting, Sat. Jan. 16th, 1960	15
A Dahlia Dash Across Continent	16-17
By President Bert Pitt	
We Attend the Mid-West Show	18-19
Proposed Research Program	19-22
West Coast News, By Julian R. Brandon, Jr.	24-28
Holland Challenge Cup Awards	29
Dahlia People	32-34
Editorial	36
Nation Wide Dahlia News of the Shows ..	37-55
Do You Like the Biggest Bulletin?	56
A. D. S. Election of Officers Ballot for 1960	58

Membership dues in the American Dahlia Society, \$4.00 per year, of which \$3.00 is for the annual subscription to the Bulletin of the American Dahlia Society, published quarterly.

Send membership dues and Research Fund Contributions to the Treasurer of the Society, Harry Dreyer, 431 Lincoln Avenue, Ridgewood, N. J.

Published by
THE AMERICAN DAHLIA SOCIETY, INC.
22 Reade St., New York 7, N. Y.

Address all editorial and advertising copy to the
Editor - - LYNN B. DUDLEY
25 Irving Place, New Rochelle, N. Y.



Court of Honor and Wedding Group at the A. D. S. - N. J. Show

This Dahlia Wedding scene was one of the features which greeted visitors at the 1959 Joint Metropolitan Show at Paramus, N. J. Sept. 23-24, 1959, at Garden State Plaza, Exhibition Hall, Paramus, N. J.

Worst Dahlia Weather in Two Decades Curtails Entries in N.Y. — N.J. Show

The 1959 dahlia growing season, was, in point of excessive, prolonged heat, coupled with high humidity and uneven rainfall, the worst in many years. In the east, at least, this condition was aggravated by scourges of stalk and corn borers.

This situation was not peculiar to this area. In California, two shows were cancelled because the dahlia plants and blooms had been literally dried up. In Holland the National Show had been cancelled due to the heat and drought. In England G. F. Drayson reports, "We have had the driest, sunniest, and warmest summer in 200 years. As a result of all this, we have had severe attacks of red spider mites, and consequently a reduction of entries at our National Show." In Germany, they report "no rain from June well into October, and many barges stranded in the mud in the canals."

So, it is little wonder that the entries in the combined exhibition of the American Dahlia Society and the New Jersey Dahlia Society, held Sept. 23 and 24 at the Garden State Plaza at Paramus, N. J. was down from thirty to forty per cent in both entries and blooms over recent years.

This was the 45th Annual A. D. S. Show and the 37th for the N. J. Society.

It was also the first one for either society held at a modern Shopping Center. The location was in the Civic Auditorium, lower level, with air conditioning and excellent lighting. The tile floor was not injured by spilled water, and the "set-up room was nearby the exhibition floor, which is always a big advantage to exhibitors.

Anthony Pietruszkiewicz, President of the N. J. Society, was a most efficient show manager. He was staunchly aided by three of the most experienced dahlia showmen in this area, Edward B. Lloyd, Henry Olsen and John Metzger. From every standpoint except number of exhibits, the show was excellent in a most attractive and accessible location. The following were winners of the Special and Sweepstake awards:

Section A—Novice. Wm. J. Neckerman, Ridgewood, N. J. with 46 points. Among his winners were: **Storm Cloud**, **Croyden Masterpiece**, **De But**, **Doris Duke** and **Cottontail**.

Section B—Amateur. Sweepstakes to John Setescak, 171 Van Horn St., Jersey City, with 45 points. Among his winning varieties were: **Startling**, **Far West**, **Perfection**, **Unique**, and **California Centennial**. Winners of Specials here were: Mr. and Mrs. J. Jagnow, Elmont, L. I., with **Windlassie**, John Musso, West Orange, N. J., with **Pride of Parkersburg**, and Dr. H. Cappel, Westbury, L. I., with **Arthur Godfrey**.

Open to All Section

Section C—Special. C 1 to C 14, Gamston Gardens, Riverdale, N. J., with **Goody**; Special C 15 to C 28, John Musso with **Bright Dragon**, C 43 to C 56, Mr. and Mrs. Harry Dreyer, Ridgewood, with **Mariposa**; Special Sweepstakes, C 61 to C 65, Fred Brenner,

Nanuet, N. Y. (17 points); Sweepstakes, C 1 to C 70, Mr. and Mrs. Dreyer (5 points); Special, C 71 to C 84, Harry Frank, Far Hills, N. J., with a new Pink I.C., called **Danny**, originated by Frank Marker, Layton, N. J., called **Danny**; Special C 99 to C 112, Dr. and Mrs. Frederick Knocke, Readington, N. J., with **Axford Gold**; Special C 113 to 126, Harry Frank with **Earl Wood**; Special, C 127 to C 130, A. Fuschetti, Summit, N. J., with **Mary Elizabeth**. This latter entry also won Special C 131 to C 134; Grand Sweepstakes to Dr. Knocke (89 points).

Section C, Open, Baskets, B B size, C 135, won by Mrs. Fred Brenner, Nanuet, N. Y., with **Gypsy Girl**. This entry also won the C 135 to C 136 Special, The A. D. S. Gold Medal Award. Mrs. Brenner also won the C 138, and the Special 137 to 138 with a basket of **Elizabeth Sawyer**. (See photo below.)

Special Grand Sweepstakes of entire Section C, the Margaret Waaser Memorial Trophy was won by Gamston Gardens with 106 points. Dr. Knocke, 89 points, Edward O'Keefe of Cold Spring, N. Y., 76 points.

Small Flowered Dahlias

Section D. Special, D 1 to D 28, Henry Olsen, Elmont, N. Y., with **Emma**; Sweepstakes, D 1 to D 34, Harry Frank with 20 points, Olsen 18 points; Special,

(Continued on following page)



Two Winning Exhibits at A. D. S. Show

These two baskets exhibited by Mrs. Fred Brenner, Nanuet, N. Y., won several awards. At left, basket of Mrs. Elizabeth Sawyer, won Special, Classes, C 137-138. At right, basket of **Gypsy Girl** won in C 135 and also won the A. D. S. Gold Medal Award, in C 135-136.

N. Y. - N. J. Show Report (Cont'd)

D 34 to D 47, Harry Frank with **Little Beauty**, Pom; Smallest and most perfect Pom, Mrs. Fred Brenner with **Gold Dust**; Sweepstakes, D 34 to D 48, F. Calkins, Waterbury, Conn., 31 points; Harry Frank, 28 points; G. Setescak, 9 points; Special D 48 to D 54, M. Schnugg, with **Imp**; Special D 55 to D 63, Harry Frank, with a seedling; Sweepstakes D 55 to D 63, Harry Frank, 15 points He also won Grand Sweepstakes with 63 points.

Special Display Classes

Section E. Dr. Knocke won the Tooker Memorial Award with **Betty Woodruff**. Winner in the President Pitt "All American" Class was George M. Boyles, with **Nita**. The Amateur Gardening Magazine Award (England), was won by Harry Frank with his new Miniature Formal, called **Red Top**. The most outstanding non-commercial entry, the before-mentioned basket of **Gypsy Girl**, by Mrs. Fred Brenner.

Undisseminated Dahlias

Section F, Class 14, Charles Stoeckel, of Patterson, N. J. won with a miniature Straight Cactus, purple seedling named Catharine Bevan.

The American Home Achievement Medal was won by **Miss Patricia Murphy**, an Informal Dec. Orange "A" size, originated by F. Tomczak, Jamaica, N. Y. and shown by Albert Parrella, Bronx, N. Y. It also won an A. D. S. Seedling Sweepstakes Award. Another Seedling Sweepstakes Award went to **Tina Marie**, A size, St. Cac., light blend of lavender with yellow at center; originated by Alfred Warren, Peekskill, N. Y., and shown by Dewey Mohr, Rockville Center.

In the Court of Honor, the Earnest E. Tooker Memorial Trophy was won by Dr. Knocke with **Betty Woodruff**; the Flower Grower Silver Trophy went to Edward B. Lloyd of Montclair, for a B size seedling, light blend, S. C. named **Charles H. Connors**. The Anthony Pietruszkiewicz Award for a variety now being tested in the A. D. S. Trial Garden was won by Yohe Vielle, Easton, Pa, with a large A size, Autumn I. D. named **Kenya**.

Arrangements and Compositions

There were over thirty fine exhibits here, many more than in the good weather years, thanks to Mrs. Harry

Dreyer, in charge. The Blue ribbon awards were as follows: "Shippers Delight," Mrs. Martin Guttler, Huntington, L. I.; "Luncheon at Horn and Hardhart," Mrs. John K. Lanz; "Bam's Bridal Salon," Mrs. Frank Leers; "New Accounts," Mrs. Guttler; Special Award to Mrs. Guttler, The Tropy of the Garden State Plaza.

A special group of arrangements, "Penny's Parade," also received a special award.

Just about the oldest dahlia on display, and it won a blue for Dr. Knocke, in C 83, was "**Uncle Dudley**" an A size, Inc. Cac., bicolor, purple with white tips, introduced by Henry Retzer, West Bridgewater, Pa., and named after this old Editor. We were glad to see Uncle Dudley after these many years. Would like to grow him again too.

Frank Marker Passes On

Just as we were going to press, this issue, Sec'y Edward B. Lloyd called us to tell of the passing on Oct. 29th, of our good friend Frank Marker of Layton, N. J., one of the pioneer dahlia growers of this area. He was in his seventies and had been in poor health for the past two years, since his retirement as baker.

He had recently been in the hospital for a heart condition and had not been able to grow the flowers he loved for the past season. He was the originator of **Renee**, a popular pink Straight Cactus in 1957, but had had several others of merit previously. He will not see the success of his latest creation, **Danny**, which is being introduced by Dahliadel for 1960. It is an incurved cactus of brilliant pink.

Frank was of Dutch extraction, most successful in his business, and highly regarded by the Layton townsfolk, as well as all of his many dahlia friends. He used to bake all night, it is said, and then spend part of the day in a roof greenhouse which was above the bakery. The heat from the bake ovens heated the greenhouse, which was a most ingenious arrangement. He leaves a son, a brother and sister-in-law, all living in Montclair, and a lot of dahlia folks who will miss him.

A.D.S. Trial Ground Report for 1959

By Henry A. Olsen, A. D. S. Chairman
48 Clement St., Elmont, N. Y.

DERRILL HART MEMORIAL MEDAL WINNERS

"A" Size.....**Lulu Pattie**—Average score, 3 Gardens, 85.82
"B" Size.....No Award—None scored 85 or better, 3 Gardens
"BB" Size.....**Queen of Spades**—Average score, 3 Gardens, 85.5
"Min" Size.....**Sarah W.**—Average score, 3 Gardens, 85.3

This is the Consolidated Report of the six Official and two Unofficial A. D. S. Trial Gardens for the season of 1959. A total of 48 varieties were certified, each of which will earn for its originator, an A. D. S. Certificate of Merit, one of the highest honors which can be bestowed on a new seedling.

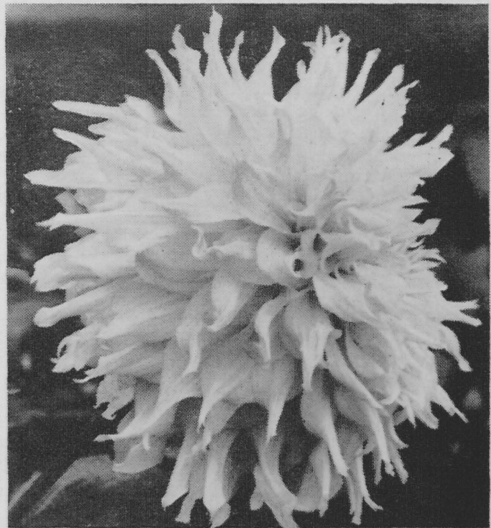
If there is anyone among those who sent these dahlias to be tested, who thinks these selections were the result of casual, hurried decisions, let them revise their thinking now.

The Superintendents of each garden selected the location, then planned and plotted the plantings. They saw to it that fertilizer and spray materials were purchased; that stakes and tying cord were on hand; watering facilities provided; Student or other help engaged to plant, water, fertilize, spray, tie-up, disbud, debranch, etc.

In the six Official A. D. S. Trial Gardens for the season of 1959, 308 varieties were entered for testing. Here is the score by garden: At Farmingdale 64 were entered, 14 received certificates, or 21% of those entered were scored 85 points or more; at East Lansing, 65 were entered, 20 received Certificates, or 30%; at Pacific Northwest, Tacoma, 37 were entered, 3 of which were Certified, or .08%; At Oakland, 77 were entered, 14 were Certified, or 18%; at Atlanta, 36 were entered, and 16 of them received Certificates, or 44%; at Cincinnati, 29 were entered, and 7 received Certificates, or 24%.

The above figures do not indicate that the judges at one garden were more lenient or less observing, than at others. All were judged as they grew at each garden. All were scored on the A. D. S. Score Card by judges who are competent to give higher points for excellence in color, form, distinction, etc. and score points off for faults. Some varieties scored 85 points or over at one garden, whereas the same variety

(Continued on following page)



LULA PATTIE, A. I. D., White
Size, 11" by 7" to 13" by 8". One of the "Biggest in Show" candidates. Has good habits of growth; stems 8" to 12". Won Derrill Hart Medal with Certificates at Farmingdale, East Lansing, Atlanta, Oakland and Cincinnati. Average score, 85.8. Originator, Comstock Dahlia Gardens.

Trial Ground Report (Cont'd)

scored less than 85 at another garden. This occurs often, and is another argument for sending a new seedling to at least three gardens. This year the weather conditions may have had some bearing on how a variety's score varied in different gardens.

Judging teams from the Participating Society in charge of the Garden were selected. These judges visited the Gardens regularly throughout the season, usually driving their own cars, and paying for their own gas, oil, lunches, and other expenses. These judges are dedicated men and women, devoted to the premise that when dahlias are to receive the A. D. S. stamp of approval for introduction, their part of the job is a big responsibility. They know that if a new dahlia receives this honor, it must be better than any existing variety. It must have superior qualities of color, form, size and stem, and have foliage, substance, uniformity and bloom position on stem which is completely satisfactory. Above all, the new dahlia to score 85 points or more on the A. D. S. Score Card, must have unquestioned distinction beyond standard varieties of similar form, color or size.

The judges get no public thanks for their time and thought. Sometimes they receive undeserved criticism from certain originators. But the judges are not the ones who stand to profit from the dissemination of the dahlia, which they help to certify. They just spend their time and money for the general good of the dahlia.

The \$3.00 which the originator pays for having his variety tested and judged in each A. D. S. Trial Garden goes to the garden towards the general expense of its operation. But it does not nearly pay for the cost of the testing. It is actually "earnest Money" paid by the originator to prove that he thinks the seedling has unusual merit. He is all too often wrong. The "Fee" has little relation to the cost of operating the garden. Often the Participating Society raises a sum of money to pay for labor, supplies or other items. If the time and money of all the people who are involved in the tests were figured into the cost sheets, it would cost the seedling owners from 30 to 50 times the fee of \$3.00. We can truthfully say that the A. D. S. Trial Garden Testing is a

terrific bargain for originators and introducers.

In 1959, varieties were sent from 23 States in the U. S., and from Australia, Japan, Germany, and Holland. Among the 48 dahlias Certified, there were 19 "A", Large; 18 "B" Medium; 4 "BB" Small Medium; and 7 Miniatures.

It was our personal privilege, as A. D. S. Trial Garden Chairman and also as a member of the Long Island Society Judge's Group to visit and judge at the garden in Farmingdale on five occasions. Because of the extreme heat and draught, which lasted through June, July and part of August, the blooms were not in condition to judge early. Not only were the blooms burned on the backs before the canter was complete, but the foliage was burned and the leaf edges on many plants turned black. We understand that this same condition prevailed in all of the Trial Gardens except that of the Pacific Northwest, at Tacoma. If the weather caused delays in the judging, that only made the work of the judges harder. We cannot say if it was the cause of some varieties failing to score 85 points. We only know that the over 75 judges involved did their best to be fair.

Winners, A. D. S. Certificates

CLASS "A" DAHLIAS

Bill Elkins, A, I.C. White Size 10" x 5" blooms facing 45 degrees and upward. Bush growth 5 ft. J. A. Eddins, 2803 Hilliard Rd., Richmond, Va. Score: Atlanta—85.2.

Danny, A, I.C., Pink, size 7" x 4½" to 11" x 8" Bright mallow pink, stems 11" to 16", blooms facing, to 45, health excellent, habit vigorous, erect, branching. Floriferousness excellent. Originator: F. J. Marker. Introducer: Dahliadel, Vineland, N. J. Score: Farmingdale—85.5, Pacific N.W. 85.553, East Lansing—85.9.

El Clemente, A, I.D. Flame, combining Rose Red with Straw Yellow, size 11" by 7"; bush 4 to five ft.; flowers facing: dark healthy foliage. Originator, D. C. Schroeder, 547 Runnymede, East Palo Alto, Calif.

Forty Niner, A, I.D., Sulphur to lemon yellow, size 7" x 3½" to 9" x 4", stem strong 6" to 16", flowers half facing to almost erect, rugged 4½' to 5¼'

Habit vigorous, rugged $4\frac{1}{2}$ ' to $5\frac{1}{4}$ ' bush. Originator: Mrs. J. W. Woodrow, 2322 Baker St., Ames, Iowa. Score: East Lansing—85.

Ida May, A, S.C., Dark Blend purple with white, size 9" x 5", good bloom position bush growth 5 ft. Needed in this class. Originator: K. K. Williams, 8020 Conser St., Overland Park, Ka. Score: Atlanta—85.

Jas Mars Jewel, A, I.C., Naples yellow suffused carmine, size 12" x 6", bush growth $4\frac{1}{2}$ ft. Originator: Jas Mar Dahlia Gardens, 110 S.E. 139, Portland, Oregon. Score: Pacific Coast—85.

Kenya, A, I.D., Autumn, amber yellow overlaid with bloodred, size 12" x 8", bush growth 4 ft. Originator: Yohe Veile, Easton, Pa., Introducer: Dahlia-del., Score: Atlanta—85.5.

Laura Rees, A, I.D., Purple, size 10" x 6" stem strong 8" to $12\frac{1}{2}$ ", bloom half facing. Health good, Habit bushy, branching, heavy foliage. Floriferousness prolific. Originator: Rees Dahlia Garden, Tilton, Ill. Score: East Lansing—85. (Scored at Atlanta—85, Cincinnati—85.5 in 1958.)

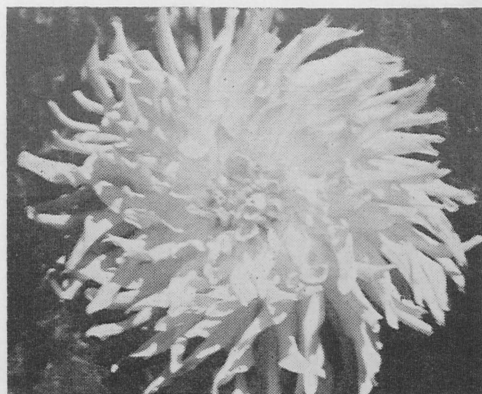
Lula Patie, A, I.D., White, size 9" to 11" x 4", bush growth 3' to 5', stem strong 7" to 12", blooms mostly erect. Healthy plants, Vigorous, erect, branching. Floriferousness good, but late. Originator: R. P. Comstock, 145 Dahlia Dr., Solana Beach, Calif. Score: Farmingdale—85.2, Atlanta—85.5, East Lansing—86.2, Pacific Coast—85.75, Cincinnati—85.

Miracle, A, F.D., Dark rose pink, size 8" x 6" to $9\frac{1}{2}$ " x 7", stem 6" x $9\frac{1}{2}$ " strong, some crooked or curved. Flowers half facing to erect. Health fine, habit bushy branching. Floriferousness good. Originator: Fa. D. Bruidegom, Baarn, Holland. Score: East Lansing—85.

Muirland's La Quinta, A, I.D., Chamois, rev. suffused Jasper Red, size 11" x $5\frac{1}{2}$ ", bush growth $4\frac{1}{2}$ ". Originator: G. Hyde Barnett, 1215 Muirlands Dr., La Jolla, Calif. Score: Pacific Coast—85.

My Doris R, A, F.D., Primrose Yellow, size 11" x $5\frac{1}{2}$ ", bush growth $4\frac{1}{2}$ ". Originator: N. W. Anderson. Score: Pacific Coast—85.

Silverado Flame, A, I.D., Autumn, Lt. Yellow Ochre suffused Spinal Red,



DANNY, A, I. C., Pink

A new and bright Mallow Pink Incurved. Grows to 11" by 8". Three Certificates 1959, Farmingdale 85.5; Tacoma 85.5 and East Lansing 85.9. Just missed the Derrill Hart Medal by 2 decimal points. The last origination by the late Frank Marker. Introducer, Dahlia-del. (Photo by Dudley.)

size 10" x $5\frac{1}{2}$ ". Color much like Bold Face. Originator: George Mayo, Star Rt. St. Helena, Calif. Score: Pacific Coast—85.

Susan Daly, A, I.D., Cardinal Red on Primrose Yellow, size 10" x 5", bush growth 5 ft. Originator: Crystal Dahlia Gardens, 1470 Newman Ave., Seekonk, Mass. Score: Pacific Coast—85.

Autumn Gold, A, S.C., Autumn, Canary yellow with suffusion of red, size $9\frac{1}{2}$ " x 4" to 11" x $5\frac{1}{2}$ ", bush growth 6 ft, blooms facing on good stem. Originator: Harold Mitzenius, 222 Outlook Blvd., Cliffwood Beach, N. J., Introducer, Ruschmohr. Score: Farmingdale—85.

San Juan, A, S.C., Signal Red, size 10" x 5", unusual petaloids throughout add to bloom distinction. Originator: Gaylord, Introducer: Dahlia-del. Score: Atlanta—85.

C.B. #1, A, I.D. to S.C., White over-cast mallow rose stripings and spots of spectrum red, size $9\frac{1}{2}$ " x $4\frac{1}{2}$ ", stem 9" to 12" strong, straight, erect. Flower facing to almost erect. Health excellent. Habit bushy, vigorous, erect branching. Originator: Glenn R. Hawkins, Rt. $\frac{1}{2}$ 3, Fairmont, W. Va. Score: East Lansing—85, Cincinnati, 85.

W-148, A, F.D., Primrose Yellow, (Continued on following page)

Trial Ground Report (Cont'd)

size 9" x 5", blooms face well but due to size may go to "B" size. Originator: William Wolbert, Introducer: Rocky River. Score: Atlanta—85.

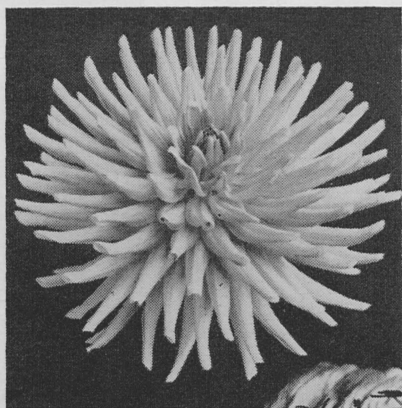
Premier, A, I.D., Spectrum Red, size 8" x 4" to 10" x 5", bush growth 4½ ft. Originator: Baynes. Introducer: Rocky River. Score: East Lansing—85.

Sulphur Queen, A, F.D., Sulphur Yellow, size 11" x 6", stem 10" to 12", strong, straight. Flowers half facing to erect. Habit erect branching vigorous. Floriferousness good. Originator: Baynes. Introducer: Rocky River. Score: East Lansing—85.3.

CLASS "B" DAHLIAS

Charm, B, I.D., Pastel mauve on white, size 7" x 4" bush growth 4 ft. Originator: Nevin Burrell, 735 W. Tulare St., Tulare, Calif. Score: Pacific Coast—85.

Helen Clark Reed, B, I.C., Orange, Apricot on tangerine orange, stem 8" to 12", strong, stiff, straight. Flowers facing to half facing. Floriferousness late. Originator: J. G. Ballego & Sons, Leiden Holland. Scale: East Lansing—85.7.



HELEN CLARK REED, B. I. C. Flame

Color mixture of Orange, Apricot and Per-simmon Orange. A bright, attractive Holland dahlia which won A. D. S. Certificate at East Lansing Trial Garden, 1959. Score, 85.7. Originator, Ballego & Sons, Leiden.

Honey Bob, B, F.D., Fuchsine Pink, size 6" x 4", bush growth 5 ft. Originator: Glen L. Stzinger, 2118 Fortune Rd., Glenside, Pa. Score: Farmingdale—85.

Jas Mar's Barbara Ann, B, F.D., Flame, Blood Red and Yellow, size 7" x 4", profuse bloomer, needed in this class. Originator: Jas Mar Dahlia Garden, 110 S.E. 139th, Portland, Oregon. Score: Atlanta—85.4.

Jeffrey D. M., B, St. C., Light primrose yellow to naples yellow, size 8" x 4½", bush growth 5 ft. Originator: Otto Martinek, 5301 S. La Grange Rd., La Grange, Ill. Score: Pacific Coast—85.

Jerry S. B, S.C., Petunia purple, size 7" x 3" to 8" x 4", bush growth 4 to 5 ft., blooms half facing on well proportioned stem, floriferousness excellent. Introducer: Rocky River. Score: Farmingdale—85.3.

Kidder Conn, B, I.D., Lt. Bl., light phlox purple on white base, size 7½" x 4" to 8" x 4", bush growth 4 ft., blooms half facing, color outstanding. Originator: C. V. Brieger, 612 Cedar-croft Rd., Baltimore 12, Md. Score: Farmingdale—85.6.

Peggy Lyn, B, I.D., Flame, carmine red & primrose yellow, size 7½" x 5", blooms half facing on long stem. Originator: Nat C. Lundgren, 123 Wood St., Santa Cruz, Calif. Score: Atlanta—85.2, Pacific N.W.—85.167.

Promise, B, St. C., Lt. Bl. Lt. primrose yellow outer half of petals changing to Barium yellow, size 8" x 4", bush growth 5 ft. Originator: Fa. D. Bruidegom, Baarn, Holland. Score: Pacific Coast—85.

Ree's Beauty, B, St. C., Lt. Bl., French rose on lt. mimosa yellow, size 6" x 3" to 8" x 4½", bush growth 4 ft., petals are lacinated at tips to give blooms a S.C. appearance. Originator: Rees' Dahlia Gardens, Tilton, Ill. Score: Atlanta—85, Cincinnati—85.

Rizilla, B, St. C., Tyrian Purple, size 8" x 4½", stem 8" to 13", strong, erect, flowers facing. Health good, floriferousness good. Originator: B. S. Chambers, 7652 N.E. Stanton St., Portland 13, Oregon. Score: East Lansing—85, Farmingdale—85.6.

Splendour, B, F.D., Tyrian Purple, size 7½" x 5", bush growth 5 to 5½ ft.

Originator: Fa D. Bruidegom. Score: Atlanta—85.

Tuki Yori No Shisha B, St. C., White, size 7" x 4½" to 8" to 5", blooms held facing on bush 3½ to 5 ft., serated petals give fine form. Originator, Yoshida, Japan. Introducer: Parrella Dahlia Gardens. Score: Farmingdale—85.

Velvet Trophy, B, F.D., Dark Red, Currant red, size 8" x 5", stem a little long at times, bush growth 4½ to 5 ft. Originator: Fa. D. Bruidegom, Baarn, Holland. Score: Atlanta—85, East Lansing—85.

Drummer Boy, B, F.D., Spectrum red, size 7" x 4" to 8" x 5", stem 6½" to 10½", strong, erect. Flowers half facing to erect. Health excellent, habit vigorous. Originator: Baynes. Introducer: Rocky River. Score: East Lansing 85.

Hopeful, B, F.D., Lt. Bl., mallow pink to white, size, Atlanta reports as a "B" 8" x 4" and East Lansing as "A" 9½" to 10", stems 9" to 13", strong, erect or crooked. Flowers facing. Health of plants excellent. Originator: Drace. Introducer: Rocky River. Score: Atlanta—85.6, East Lansing—85.

Tempest, B, I.D. to S.C., Va., Sulphur yellow overcast mallow pink with red stripes and spots. Blooms 6" to 9", depth 3 to 4". Stems 8" to 1", straight, strong. Flowers facing to almost erect. Health excellent. Habit dense, bushy and erect. Originator: Rocky River—East Lansing—85. Cincinnati—85.

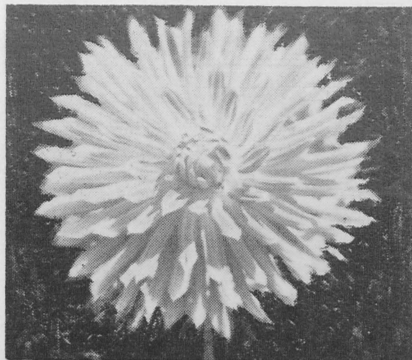
Farbenzauber B, I.D., Blend, Turkey red, tips and reverse Lt. Straw Yellow, size 7" x 4", bush growth 4½ ft. Originator: Rolf Wagschal, Reinbek, Hamburg, Germany. Score: Pacific Coast—85.

#239-A 14, B, F.D. White, size 6" to 7" by 4", bush 4 to 5 ft. Blooms half facing; stems 8 inches. Originator: Dahliadel, Vineland, N. J.

7C, B, S.C., Light Blend, lavender and white, size 6" by 3" bush 4 ft. Originator, J. R. Carlisle, Amelia, Ohio.

CLASS "BB" DAHLIAS

Cathy Barton, BB, St. C., Peony purple, size 5½" x 3" to 6" x 3½", bush growth 4½ ft., flowers facing, health good, floriferousness excellent. Originator: O. C. Grotty, 2644 Marsh Rd., Wilmington 3, Del. Score: Farmingdale—85.



FARBENZUBER, B, I. D., Dark Blend

A visitor, from Germany. Another of the Dark Blends, Turkey Red tips and reverse, suffused on Straw Yellow. Scored 85 at Oakland, 1959. Originator, Rolf Wagschal, Reinbek, Hamburg, Germany. (Photo by R. E. Harter.)

Peach Parfait, BB, S.C., Venetian pink on amber yellow, size 5" x 3", bush growth 4½". Originator: Haywood O. Allen, 8232 E. 20 St., Westminster, Calif. Score: Pacific Coast—85.

Queen of Spades, Ball, Purple, Indian Lake, size 3¼" x 2½" to 5" x 3½", bush growth 4 to 5 ft, stem 8" to 12", strong, straight, flowers top facing to facing. Health excellent, habit dense, erect branch. Floriferousness excellent. Originator: J. G. Ballego & Sons, Leiden, Holland. Score: Farmingdale—85.3, East Lansing—85.3, Pacific Coast—86, Cincinnati—85.

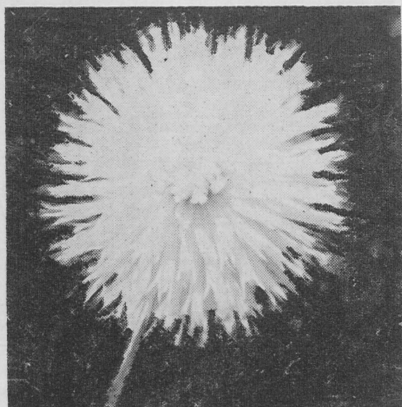
Sernade, BB, F.D., Lt. Bl. light perision rose on cream base, size 4" x 3" to 5" x 3½", stems 5" to 11", strong. Flowers half facing. Health good.. Floriferousness prolific. Originator: Alton J. Parker, 62 Hinklyville Rd., Spincerport, N. Y. Score: Farmingdale—85, East Lansing—85.

SMALL FLOWERING CLASS

Centennial Joy, M, I.C., Au. size 4" x 2½", stem 10" to 14", stiff, wiry, straight. Flowers half facing to erect. Health, vigorous plants. Abundant flowering, late. Originator: Swan Island Dahlias, Box 901, Canby, Oregon. Score: East Lansing—85.6.

(Continued on following page)

Trial Ground Report (Cont'd)



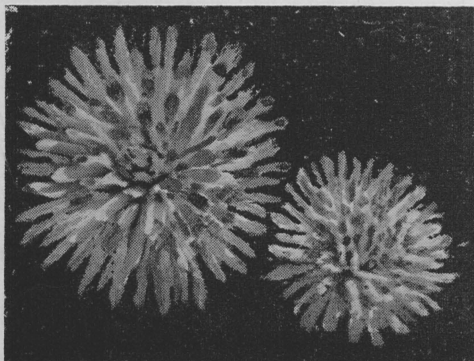
PROMISE, B. ST. C., Light Blend

New one from Holland. Color, combination of Primrose Yellow and Barium Yellow. Size 8" by 4". Scored 85 at Oakland. Originator, Bruidegom, Baarn, Holland. (Photo—Harter.)

Harriet, Min. Ball, Pr. light Indian Lake, size 4" x 3", bush growth 4 to 6 ft. Floriferousness excellent. Originator: Nat C. Lundgren, 123 Wood St.,

SARAH W., Min. St. C., Blood Red

The little red St. cactus named after Sarah W. Wood. Won Derrill Hart Medal for small dahlias 1959. Received Certificates at Farmingdale, East Lansing, Tacoma, Oakland, with average score of 85.33. (Ruschmohr.) (Photo by Dudley.)



Santa Cruz, Calif. Score: Atlanta—85.2, Pacific Coast—85.5.

Little Lizzie, M, F.D., Primrose Yellow, size 3½" x 2", stem 6" to 11" strong, erect, graceful. Flowers half facing. Health good. Habit, vigorous, rugged, dense erect branching. Floriferousness excellent. Originator: H. L. Whittaker, 2602 Lyndon Ave., Chattanooga, Tenn. Scott: Farmingdale—85.4, Atlanta—85.2, East Lansing—85.1, Cincinnati—85.

Peanuts, M, F.D., White, size 3" x 2", bush growth 4½ ft., good growth in a needed class. Originator: Alton Smith, 4309 Gaines Rd., Richmond 22, Va. Score: Atlanta—85., Cincinnati—85.

Red Top, M, F.D., Orient Red, size 3" x 2", bush growth 3½ ft. Floriferousness excellent. Originator: Harry Frank. Introducer: Dahliadel. Score: Farmingdale—85.5, Atlanta—85.

Sarah W., M, St. C., Blood Red, size 3" x 2" to 4" x 2½", stem 6" x 12", thin, wiry. Flowers facing to half facing. Health good. Habit erect, branching, vigorous. Floriferousness good. Originator: Ruschmohr Dahlia Gardens. Score: Farmingdale 85.5, Pacific N.W. 85.5, East Lansing 85, Pacific Coast 85, Cincinnati 85.

Small Frey, M, I.C., Red, orient red, size 3½" x 2", stem 5" x 14", long strong, flowers side facing. Health of plants excellent. Vigorous growth. Floriferousness excellent. Originator: Conrad Frey. Introducer: Dahliadel. Score: East Lansing 85.

Report of the Two Unofficial A. D. S. Trial Gardens

Before a Trial Garden is Officially Certified by the A. D. S., it must grow seedlings and other dahlias for two seasons under the cultural conditions which all Trial Gardens must follow. Judging teams, in these two years, must become familiar with the A. D. S. Score Cards so that all T. G. scoring may be as uniform as possible.

Here is the report for two of these gardens for 1959.

North Central Trial Garden

There were 54 varieties entered here, 2 of which scored an average of 85

points, while 5 others scored between 80 and 85 points. These are the two recommended for A. D. S. Certificates:

Tatoo, M, I. D. Variegated. Lavender striped purple. Seedling of Catharine. Size, 3" by 1½". Bush habit excellent, height, 4 ft. Early; profuse. Originator, Bloomington Dahlia Gardens, Minneapolis. Score 86.

Blackhawk, M, F. D. Dark Red. Seedling of Arabian Knight, but blooms have more petals and it is a more profuse bloomer than its parent. Size 2½ by 1¾ inches. Early and floriferous, petals recurve to stem. Score, 85. Originator, Bloomington D. Gardens.

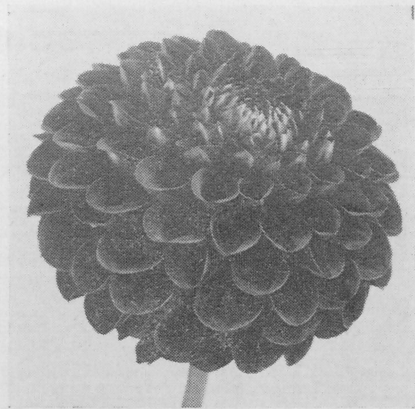
Badger State Trial Garden

This Trial Garden was operated this season for the first time in Olbrich Park, with the cooperation of the Park Dept. of the City of Madison. There are many beds of other flowers and named variety dahlias nearby and many visitors were attracted to the location. The seedlings, 26 in number from seven states were grown in accordance with the A. D. S. Trial Garden Committee directions. Three were judged to be qualified for A. D. S. Certificates. They are:

Drummer Boy, A, Red, F. D. A brilliant red F. D. with most blooms averaging 8½" x 5". Stem length 6"-8". Most blooms faced at 45°. Stems strong and straight, vigorous grower. Floriferousness good. Bush height 4½ feet. Originator Baynes of Australia. Entered by Rocky River Dahlia Gardens, Columbia Station, Ohio. Score 86.

San Juan, A, Flame, S. C. A flame red S. C. with a slight blending of yellow at the petal tips and center. Most blooms S. C. in formation, but some I. D. Bloom size 8½" x 4". Stems 6". Blooms facing to half facing. Stems strong and straight and foliage health excellent. Profuse bloomer. Bush height 5 feet. Originator John Gaylord, 285 Douglas Street, San Francisco, Calif. Entered by Dahliadel Nurseries, Vineland, N. J. Score 85.

J. Clare, B, Dark Red, F. D. A dark red F. D. of B size. Bloom size, 6¼ x 4 inches facing to half facing on good stems, 6-8 inches. First bloom August 26th. Bush height 5 feet. Vigorous grower and profuse bloomer. Entered by originator, J. Clare Moore, Jr., 15525 Ridgeway Avenue, Markham, Illinois. Score 86.



QUEEN OF SPADES, Ball, Purple

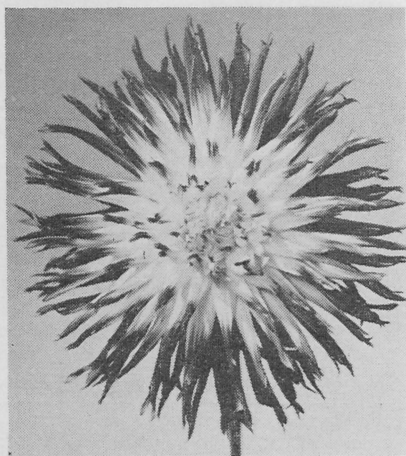
Color is Indian Lake; size 3¼ by 2½ up to 5 by 3 inches. One of the finest Ball types in years. Originated by Ballego, Holland. Won Derrill Hart Medal, 1959 for B. B. size. Scored at Farmingdale, East Lansing, Oakland and Cincinnati. Average Score, 85.5.

LIFE to Carry Dahlia Feature in March, 1960

It was the privilege and good fortune of your Editor to be asked to cooperate with LIFE Magazine in the preparation of a four-page Feature in color, showing four New Introductions for 1960, along with some large varieties of recent introduction. This involved some five visits to the A. D. S. Trial Garden at the State University Agricultural and Technical Institute, Farmingdale, L. I., and many visits to other gardens.

Because of the worst dahlia growing season in many years, some varieties bloomed very early. Then, during the period of above 80 degree heat night and day for six weeks, the blooms did not mature properly. This made decisions as to those to be selected for photographing most difficult. Then, one of those which was selected had bloomed out by the time photographs were taken on October 1st, so it could not be included. It was a tough assignment, but we have every reason to believe that the feature pictures and story will be a great boost for dahlias. The large circulation of LIFE running into many millions, will show the glory of this grand flower to the largest group of gardeners in the United States.

A. D. S. Seedling Sweepstakes



KIMBERLY JEWEL, B—St. Cac., Dark Blend A colorful dahlia from South Africa. B—St. Cac. Solferino Purple on White base. Won Am. Home Achieve. Medal, Minneapolis, 1958 and A. D. S. Seedling Sweepstakes also. Since then has captured 7 more of above awards. Originated by Norman Southerland, Kimberly, So. Africa, introducer, Glen Pierce.

Forty one Societies made application this year for the A. D. S. Seedling Sweepstakes Awards and to date, we have received scores from 25 shows. In 15 cases, no entries were worthy of an award and one Society sent no reports. The scores to date are as follows:

"A" SIZE

No Gold Medal Winner.

The following varieties all scored not less than 85 at least at one show:

Tina Marie, (Warren) S.T.C.—Persian Rose with yellow center.

Pennsylvania, (Stanley Johnson) I.D. Current Red.

Seafair Princess, (Peblo Abellene) I. C.—Tyrian Purple.

Cinch, (Andrew Babb) S.C.—Light Yellow.

Mrs. Patricia Murphy, (Tomazac) I. D.—Orange.

Harrison, (Catherine E. Miller) I.D.—Orient Red

Dr. V. V. Phelps, (Stanley Johnson) I. C.—Rose Red.

Ruth Ella, (Nat Lungren) I.C.—Purple.

Fabulous, (Mr. and Mrs. H. H. Robens) I. C.—Light Blend.

Lula Pattie, (Comstock) I. D.—White.

Violet Beauty, (Stanley Johnson) S. C.—Purple Violet.

Daisy Jones, (Walter Huber) S.C.—Rhodamine Pink.

"B" SIZE

Gold Medal Winner is "Kimberly Jewel" (Norman Sutherland) Kimberly, So. Africa. St. C.—Dark Blend—Three Shows—Average 85.73.

The following varieties scored 85 or better at least at one show:

Peggy Lyn, (Nat Lungren) F.D.—Red Blend.

Cascade Kay, (Tony De Rooy) I.C.—Light Blend.

Peggy Ann, (Nat Lungren) I.D.—Light Blend.

Quana, (Nat Lungren) I.C.—Primrose Yellow Base.

Lorraine S., (Richard Sproul) I. C.—Dark Blend.

"BB" SIZE

No Awards.

M, SMALL

Gold Medal Winner "Catharine Bevan" (Charles Stoeckel) Paterson, N J. S.C.—Purple, has scored at three shows with an average of 85.91. Runner up—Peanuts (Alton Smith) F. D.—White scored at three shows.

The following miniatures also scored 85 or better at least at one show:

Boots, (Stanley Johnson) S.C.—Autumn.

Little Lizzie, (H. L. Whittaker) F.D.—Yellow.

American Beauty (Nick Kindlein) F.D.—Rose Red.

Red Top (Harry Frank) F.D.—Orient Red.

It is requested by the Committee that those Societies which have A. D. S. Seedling Sweepstakes Ribbons on hand that they retain same for next year. The



RUTH ELLA, B. I. C., Purple

This new show winner was transported several hundred miles to several shows on Pacific Coast. Won A. D. S. Sweepstakes and Am. Home Awards at Englewood, San Diego, and others. (Photo by Larry Sisk.)

cooperation of each Society which participated in this year's awards is sincerely appreciated.—Drew Mulcahy, Charman, A. D. S. Seedling Sweepstakes Committee.

Mildner Study of Virus Diseases of the Dahlia

Now Available in Booklet Form

The Study of "Virus Diseases of the Dahlia," which appeared in serial form (two installments), in the May and August, 1959 Bulletin, will shortly be available in booklet form. It is published by the American Dahlia Society and is 20 pages and cover. The price is 50 cents per copy, except that it will be given free, to all contributors to the \$5,000.00 A. D. S. Research fund.

The study is acclaimed by plant pathologists, editors and research experts both here and abroad, as the most complete and detailed work on this subject, ever compiled. Everyone who grows dahlias should keep it as a reference work. The publication was made possible through a special contribution to the Research Fund by Past President Leo L. Pollak, for which all dahlia growers, interested in disease-free gardens should be grateful.

Forty-fifth Anniversary Annual Meeting and Banquet of A. D. S. Sat. Jan. 16, 1960

The Annual Meeting and Banquet will again be held at the Park Sheraton Hotel, in New York, on Saturday, Jan. 16, 1960. The Annual Meeting will take place at 2:30 P.M. The results of the election of officers will be presented and will be inducted into office. The Committee Chairman and Chairwomen will render their reports and the regular order of business will be discussed.

The Colonial Room on the Mezzanine Floor will again be the Dinner room and this will be served at 7 P.M. There has not been a set program up to this time, except Lynn B. Dudley and Henry Olsen will again show Kodachrome slides of the various 1959 Shows as well as some slides of the 1960 Introductions. Lynn informs us that he has slides of over 40 of the 64 entries at Farmingdale, as well as lots of standard varieties and many show and garden scenes.

Dewey Mohr and John Metzger will continue to serve on the Banquet Committee. Please make your reservations prior to Thursday, Jan. 14. If anyone should send in a check for reservations and, for some reason or another, they are unable to attend, their money will be refunded.

If you desire to stay at the Hotel for the weekend, please write them as soon as possible, mentioning the American Dahlia Society Meeting.

The price of the Banquet will be \$7.50 each, which includes gratuity and tax. A special get-together room has been reserved for Friday and Saturday evening for members and guests, who care to discuss any dahlia problems they might have.

This is our 45th Anniversary and we hope that there will be a good turn-out to take part in the celebration of it.

We hear, with regret, that Garnett Huey, former editor of The Dahlia, has been quite ill at his home, 10149 Rosin Ave., Whittier, Calif. We hope, when this is printed, that he will be fully recovered. Perhaps a get well card would cheer him, even if he is now well. Paul Hale of Brighton, Ill., has succeeded Garnett as Editor of The Dahlia.

A Dahlia Dash Across the Continent

By Bert Pitt, President, A. D. S.

In the May 1959 issue of this Bulletin there was some mention of how we dash across the country to visit some far away dahlia show, and this is an account of such a trip, and what we saw.

The story begins some two years ago when the pages of this Bulletin carried an invitation from Pete Harter of Alamo, Calif., director of the A. D. S. Trial Garden, Oakland, Calif., for some of us here in the East to visit the first show to be held in the new Garden Center which was then only in the planning stage.

The new building was scheduled for completion this year, and the newly formed East Bay Dahlia Society had planned its first show for August 22 and 23. I had also received an invitation from the Dahlia Society of California to attend its show in San Francisco on August 20 and 21. This meant driving from New York to California in five days, but we made it without incident. Pete and Mrs. Harter picked us up at our motel on their way in to San Francisco, and we all drove in together.

The dahlia shows in the Bay area are quite different from any I had previously visited, either here in the East, or others on the Pacific Coast, and so a brief description is in order. Each exhibitor has his own table upon which he places all of his entries in the various classes (seedlings and a few special classes excepted) striving always to achieve a harmonious and artistic table display for which there is an additional ribbon or prize. The exhibits in the various classes are not, then, always in the same place on the table, and the judge must go from table to table and seek them out in order to see all of the entries in the class under consideration. Variety names are not shown, and no classification list is followed, the blooms being shown as they grew. There were no classes calling for size, type, and color, the emphasis being more on the arrangement of large numbers of dahlias

of a specied color or combination of colors rather than on specimen blooms according to class and color. One advantage of such an arrangement is that the exhibitor can see immediately how many blue, red, or white ribbons he won, but to me, this would be balanced by the disadvantage of not knowing who had won the blue ribbon in a class where I had won a red or white ribbon, or none at all.

As always, I was on the lookout for unfamiliar varieties, but the absence of variety names made this difficult. A basket of **Arguello** was first to attract my attention. This should not have been an unfamiliar variety, for I had tried to grow it for two or three seasons. However I was never able to achieve the quality which the Schroeders displayed here. A similar number of **Eva Stamford** occupied the center of Nat Lundgren's exhibit, and Rafferty Dahlia Gardens had a large display of **Shirley H. New York Market** was one variety for which I was able to get a name. This is a large white F. D. with a touch of lavender at the center. Five or six blooms made a fine display. Another white was a medium sized but very deep S. C. named **Taj Mahal**, but I was told that this variety was not available. Another undisseminated variety was a large yellow F. D. which I was told belonged to Roy Webb. There were others, but I was not able to find the owners and get the names.

After the judging, the Harters took us to visit Walkup's garden in Berkeley. Here we found dahlias growing in rows of three, one foot apart each way. They were fine quality too. What interested me most, was the watering system. Lengths of three tube plastic sprinkling hose were laid down between the rows. When the plants are full grown, the water hits the lower leaves and then drips down to the ground without damaging the blooms. I tried it out when I returned home, and it worked very well.

Sunday was given over for the most part to the dedication of the new Garden Center Building, but we found time to visit the nearby Trial Garden, and

Visiting shows so different in character from those to which I had been accustomed was quite an interesting experience, and it was also a great pleasure to meet again so many dahlia people whom I had met on previous visits to the West Coast, and to add to the list so many more whom I met for the first time. There were so many that I can't remember all the names, and so won't attempt to mention them, but in the fullness of time, I hope to make other visits to the West Coast, and perhaps to meet them all again.

The dates have been selected as Wednesday and Thursday, Sept. 21 and 22. As it is Leap Year, it is probable that a young, pretty, unmarried lady will be made Show Manager. The location, at the junction of the two main routes in North Jersey, Route 17 and Route 4 make it most accessible. The show room is ideal, and parking and unloading space ample. The two large eastern Societies look forward to another successful exhibition in 1960.

Charles H. Connors, 115 N. 6th Ave., Highland Park, N.J.—Chairman A.D.S. Nomenclature Committee.

We Attend Mid-West Show in Pittsburgh

Henry and Bea Olsen with Andrew Mulcahy, called at our "Garden Estate" in New Rochelle at exactly five a.m. Thursday, September 10th. We surprised them by being all ready to go.

It was a fine day and we made good time. Stopped at The Shartlesville Hotel for a Dutch Lunch (and we refute any report to the contrary, that "Drew Mulcahy ate any Shoo Fly Pie.") We arrived at the Penn-Sheraton Hotel about 2:30 p.m. Unfortunately, we were just too late for the Bus Tour to the H. J. Heintz Plant and so missed our pickles. Next morning, however, after breakfast, we joined the bus tour to visit the dahlia gardens. The route took us up the famed Bigelow Boulevard past the Veteran's Hospital, the University of Pittsburgh Campus, Forbes Field, the baseball Stadium, the Mellon Institute, the Masonic Home and many fine church edifices. We passed Shenly Park Golf Course, the only golf course in the city, and Frick Park.

The first garden stop was that of Charles Boyd, on Trenton Ave. Next door was Mr. Montgomery's garden and the two sort of merged their rows of dahlias. Here we found many recent introductions, and some older varieties which we had not seen for a long period. "Rudy" Motznick's garden on the slope was the next stop. We spent more time here taking Kodachromes than we did checking the varieties, but his garden was well kept and watered in this dry season. It contained some 600 plants, by our guess. The address was 4429 Brightview Ave. and it was well named.

At noon the third stop was at the home of Mr. and Mrs. William Koenig, President of the Pittsburgh Society, 2309 Bethel Church Rd., Mr. and Mrs. Ray Baker lived nearby and they and many of the Society members helped the Koenigs serve a most tasty lunch. Some of the A. D. S. group are still talking about the Cream Punch which was served. In the Koenig Garden we were attracted to *Ministre Collart*, a B.,—*F. D. Yellow-Red*; *Arubnita*, "A" Red *S. C. Kidd's Climax* and *Tidal Wave* were excellent, also.

On the way home, we stopped at the famed Inclined Railway which Mr. Mulcahy and the writer could see from

our hotel window. The grade was slightly less than straight up, the cars, one up and one down, were supposed to counterbalance and we are happy to report that they did on our trip. We had traveled 54 miles.

When we arrived at the hotel we went downstairs to see how the exhibits for the next day's show were coming. There were few on the tables, but just then Paul and Mrs. Hale arrived from Brighton, Ill., with their own twin daughters and a station wagon load of blooms, in cans. That colored up the place better. Next morning Dr. and Mrs. Fred Knocke of Readington, N. J., came with a "horse trailer" load of "A" size blooms, and Harry and Mrs. Frank, from Far Hills, N. J., dropped in with about the only *Pompons* exhibited, and some nice miniatures, too. Most of the Knocke and Frank entries received blue ribbons. The show surprised everyone, in view of the very bad weather, for the quality of blooms.

It would be nice if we could list all of the old friends whom we met and "chinned" with. But space does not permit. It seemed to us that there were more A.D.S. members present than from any other society. The report of the Mid-West Conference is detailed by Louise Klinejohn. But we would speak of the Annual Banquet. Our guess is that there were some 350 guests. Toastmaster was Charles G. Smith. Rev. Robert A. Messenger gave the invocation. President Koenig was to have made a short address, but he never got to it. Paul Hale was scheduled to make the address of the evening, and, knowing Paul, we know it would have been most interesting, but alas, it never got off the rostrum. The reason; Miss Betty Dugan's "Starlets." This was an aggregation of some very talented youngsters, who sang, danced and pranced for over two hours. The trouble was, once started, they couldn't be stopped. You see, each young performer, accompanied by their parents or guardian, believed that there were some impresarios in the audience, and each one just had to go through their complete routine, regardless. Oh well! For the first hour the audience

(Continued bottom of next page)

PROPOSED 1960-1961 A.D.S. RESEARCH PROGRAM

It has been said that science is a carefully planned and co-related study of the things around us. The science of dahlia growing includes breeding, plant propagation, cultivation, fertilization, mulching, spraying, tying, labeling, staking, control or elimination of diseases, storing roots and many other things.

The problems of Pest Control in various sections of the country has the advantage of testing of various insecticides, has the advantage of the testing programs conducted by expert entomologists at the Agricultural Experiment Stations. These tests are usually inaugurated and financed by the concerns which produce the insecticides. Chemists here and abroad have, since the beginning of World War Two, evolved many new and more effective insecticides than we have ever had.

Yet, to eliminate or control the Five Virus Diseases which infest nearly every dahlia garden in America, there has been but little research to help dahlia growers recognize these diseases and eradicate them from their gardens. This fact has been clearly shown by the "Study of Virus Diseases of the Dahlia" by Rowland A. Mildner, Jr., of the Pathological Department of Michigan State University, published in the May and August, (1959) issues of this Bulletin.

"Urgent Need for Research," says Mildner

About the importance of this research, Mr. Mildner writes: "There is urgent need of rapid test for the presence of dahlia viruses, such as the color test, (serological) which I have described. An attempt should be made as soon as possible A rapid test, such as the one which would perhaps enable the growers to check their roots during the winter months, and thus be able to choose only clean stock for propagating, would help to keep these viruses from being shipped around the country in the green plants by commercial and other growers."

"Research Absolutely Necessary" — Mason

"Dahlia Research is absolutely necessary to rid our gardens of devastating

diseases and destructive predators. And let's not fool ourselves, the 'Free Ride' for dahlia research is over. The sooner this is realized and trained personnel engaged, (and paid) to conduct necessary experiments, the sooner we will overcome the serious difficulties confronting the dahlia grower today," says Arthur S. Mason, A. D. S. Chairman of the Research Committee.

"Com'r'l Firms Should Back Plan"—Wildon

Dr. C. E. Wildon of the Michigan State University, and Director of the A. D. S. Trial Gardens at East Lansing, says: "American Commercial Dahlia Firms should be most vitally interested in this expanded A. D. S. Research Program, because of the recent rapid

was most pleased. Second hour, we watched the expression on the faces of Pres. Koenig and Paul Hale grow glum. But they were both game when they sensed, after two hours, that the guests had had it, they threw the speeches away, and Paul quoted this Bulletin's May issue which said, "Paul Hale will be the guest speaker, and both the speaker and Pres. Koenig assure visitors that the speech, will be short." It was the shortest "Speech" ever heard at a Mid-West Banquet. Paul concluded by saying, "if you want to hear the address I would have given tonight, come to Louisville next year."

—Lynn B. Dudley.

(Continued on following page)

Proposed Research Program (Cont'd)

spread of Dahlia Virus Diseases in the U. S. A. Such diseases now threaten the future material success of all sales of dahlia plants and roots."

"Individual firms, as well as amateur growers, who can do so, should make immediate contributions to the A. D. S. Research Fund, as announced in the May and August A. D. S. Bulletin." "As you know the Michigan Dahlia Association has gone on record, supporting the A. D. S. Research Fund, and will soon make an appropriation to it," concluded Dr. Wildon.

"I am in favor of the A. D. S. Research Fund, 100%," writes Paul Hale of Brighton, Ill., A. D. S. Vice President and Editor of "The Dahlia," published by the Central States Dahlia Society. "The more we learn about the diseases of our favorite flower, the better off we will be. Even tho' it means one of the Hale kids will have to go to school this winter with 'holes in their shoe soles,' we will be sending a contribution to the Research Fund soon."

Others have written commending the Research Plan, and have sent checks to Treasurer Harry Dryer. These are the results of the inauguration of the Program to raise \$5,000.00 to finance a two-year Research Program, as announced in the May Bulletin.

Now Dahlia People, generally speaking, are not rich. Most of them work for a living and raise dahlias for an avocation. There are a few of us who have retired from business and are living on savings, social security and if lucky, also a pension. There are few members of the A. D. S. who are reputed to be well off. Two of these have indicated that their wills contain bequests to the A. D. S. If this is true, we can only say to them, why wait? The A. D. S. Research Fund could really put to good use such bequests right now, and the donors could get the credit and satisfaction for helping all dahlia growers before they pass on.

The Most Important A. D. S. Project

This Research Program can easily be the most important project which

this society has undertaken in all its forty-four year history. Every individual member and every one of the nearly 50 Participating and Affiliated Societies can now come to the aid of their National Dahlia Society and back the Research Project with their dollars. Every dahlia grower will benefit. Societies are asked to discuss the matter at their meetings and, if in favor of it, make contributions by either as individuals or society units. Its the best way known to have healthier gardens, all over America.

The American Dahlia Society Research Committee is appealing to every dahlia grower everywhere to make a contribution NOW. All monies contributed will be placed in a Special Bank Account by Treasurer Harry Dreyer, to be drawn upon as needed to promote the program. The Research Committee, headed by Arthur S. Mason of Arlington, Virginia, has prepared a carefully detailed Plan of Dahlia Research, preliminaries of which are outlined below. The A. D. S. Educational Committee, Chairman Dr. Charles Conners, has been asked by President Bert Pitt to join the Research Committee in the operational direction of the Research Program. The progress and results of the program, as well as the expenditures for same, will be reported in future Bulletins.

Your subscription to the A. D. S. Research Fund may be paid over the two year period, instead of in a lump sum, if you prefer. A Subscription Blank for this purpose follows. May we ask that you clip it out, fill out, attach a check or money order, made payable to the A. D. S. Research Fund. Then send both to Harry A. Dreyer, 431 Lincoln Ave., Ridgewood, N. J.

You may be assured that the Research Fund will be carefully administered by the Committee members whose names appear below. Monies will be spent only after a thorough investigation of the facilities, experience and personnel of the group or individuals finally selected to undertake the experiments.

The A. D. S. Research Committee

The committee which will be responsible for the success of the Research Program is composed of the following:

Arthur S. Mason, Arlington, Va., Editor of the Dahliagram, N. C. D. S., Washington, D. C. and for many years, with the U. S. Department of Agriculture.

Leo Pollak, New York City. Now a valued civilian employee of the Navy Dept. in Washington, D. C.

Lynn B. Dudley, New Rochelle, N. Y. Editor of the A. D. S. Bulletin. Now retired after a long career in Advertising Agency work.

Professor C. E. Rissmeyer, Director of the A. D. S. Trial Garden at the State University, Agricultural & Technical Institute, Farmingdale, L. I.

Dr. C. E. Wildon, Director of A. D. S. Trial Garden, Michigan State University, East Lansing, Mich.

Paul Hale, Editor of "The Dahlia," Brighton, Ill.

The A. D. S. Educational Committee

As previously mentioned, the Educational Committee, with Dr. Charles H. Connors as Chairman, has been asked by President Pitt to join with the Research Committee to make the Program more effective. Their advice and help will be welcomed by the Research Group. This Committee is composed of A. D. S. Past, or Vice Presidents as follows:

Dr. Charles H. Connors, Chairman. Highland Park, N. J.

George Fraser, Willimantic, Conn.

Ralph Berry, Rocky River, Ohio

E. J. Wind, Columbia Sta., Ohio

Mrs. Sarah Wood, Southport, Conn.

Charles Watson, Signal Mountain, Tenn.

Warren W. Maytrott, Vineland, N. J.

A Long-range Program Planned

Any Properly planned Research Program must have objectives. If funds are available for the next two years, it is the intention of the combined Research and Educational Committee not only to plan for that period, but to have it a

part of a longer, Five Year Plan if possible.

A series of studies will be inaugurated enced personnel at one or more State and experiments conducted by experimental Institutions, with the objectives of trying to improve different departments of dahlia culture, as the available funds will permit. Procedure will be made along these general lines:

1. A Continued Study of Dahlia Diseases.
 - (a) With immediate efforts directed to discovery of a reliable color, (serological) method of virus detection in roots in storage.
2. Experiments With Available Insecticides. Nematodacides.
3. Tests for Properly Balanced Fertilization—Garden,—Exhibition.
4. General improvement of dahlia soils.
5. Better methods of Root Storage.
6. Advantage of Different Types of Planting Stock: Rooted Cuttings; Plants; Pot Roots; to Secure: (a) Better Exhibition Quality; (b) Larger, Longer Keeping Clumps; (c) More Eyes On Crown.
7. Other Projects as the Need Arises.

All That is Needed Now is Money

Your Contribution, whatever the amount, is needed NOW. Research plans are complete. Expert personnel awaits direction to start work. The Committee is prepared to proceed. The only remaining requisite is enough subscriptions of sufficient total to get started. Any amount will be welcome. And it does not have to be paid all at once. (See Subscription Blank Next Page.) And remember, \$5,000.00 is not an impossible two-year goal.

For instance. If 200 dahlia growers would subscribe \$25.00 per year for the first two years, that would provide \$5,000.00 per year, or \$10,000.00 for the Two Year Plan. Or, if 25 Dahlia Societies would collectively pledge \$100.00 per society, over two years, (\$50.00 per year) and 250 individual A. D. S. Mem-

(Continued bottom of next page)

Send Show Reports of Winning Varieties to Chas. Diffenderffer

It is essential to the early publication of the Joint Classification List that show reports, including the varieties which won, be sent immediately to Charles Diffenderffer, Chairman of the Joint Committee.

He advises that some reports have been received, but that there are many societies which have neglected to mail theirs. So if an up-to-date List is desired, society officers should see that reports are sent at once to Charles Diffenderffer, 2204 N. Charles St., Baltimore 18, Md.

Among the donors and contributors to the cost of the Joint A. D. S. - N. J. Joint Show at Paramus, N. J. Sept. 23-24 last, were:

John Metzger	Roy Webb
Ruschmohr D. Gardens	Drew Mulcahy
Parrella D. Gardens	Louis Gill
Mrs. Sarah W. Wood	Harry Dreyer
Hanna D. Gardens	Lynn B. Dudley
Charles Diffenderffer	John Musso
Mrs. Margaret Smith	Gamston Gardens
Robert P. Connal	Frank Seaman
Henry Olsen	Leslie Del Tuffo
Caroline Meyer	The Warren Maytrot's
Edward M. Keck	Conrad Frey
Mr. Dwan	Dr. and Mrs. Nash
Carl Marker	Garden St. Tenants

Use Blank Below to Make Pledge to Research Fund

bers would also contribute \$10.00 each per year for two years, the total Two-Year Fund would amount to \$7,500.00. Such pledges are not beyond realization, even from folks with modest means, if they believe the Research Committee is competent to administer the Program, AND if they can appreciate the

urgent need for some investment in research to improve dahlia culture in their own and their neighbor's gardens.

For your convenience in contributing we append a Research Fund Pledge Blank. Please clip it out and mail with your contribution, or part of it, NOW, TODAY.

(My) (Our) Contribution to A.D.S. Research Fund

Date.....

Harry A. Dreyer, Treasurer,
431 Lincoln Avenue, Ridgewood, N. J.

(We) (I) hereby subscribe \$..... to the A. D. S. Research Fund for a carefully planned, two-year Program. (1960-1961)

(We) (I) prefer to make the contribution on a:

(A)—One payment basis, of \$....., with check for full amount enclosed herewith.

(B)—Two-payment basis, of \$....., 1/2 of which is enclosed.

(C)—Four-payment basis, of \$....., 1/4 of which is enclosed.

(Note—When payments are made on an extended basis as elected above, A. D. S. Treasurer will send interval statements when payments are due.)

It is understood that detailed reports of Research accomplishments and expenditures will be made regularly in the A. D. S. Bulletin.

Signed

Address

Phone. No.

Ruschmohr Presents Big Winners of 1959

We appreciate the patronage of our many friends in past years. For them we have four of the big award winners of the past show and A. D. S. Trial Gardens season. One—"SARAH W." is a Derrill Hart Medal Winner. AND WELL WORTH GROWING.

AUTUMN GOLD (Mitzenius) A.S.C. Autumn gold. Size $10\frac{1}{2}$ " x 5". Blooms all facing with good healthy foliage on 6' bushes. Was only entered in one trial ground due to limited stock, in Farmingdale, L. I. where it received a Certificate of Merit. **Plants \$5.00 Net.**

TINA MARIE (Warren) St. C. Rich blend of Persian Rose and Cadmium yellow. Blooms $10\frac{1}{2}$ " x 4" facing. Good foliage. Bush 6'. Winner of American Home Achievement Medal at L. I. Show. Also A. D. S. Sweepstake Winner in the L. I. Show as well as the American Dahlia Society Show in Paramus, N. J.. **Roots \$15 Net; Plants, \$5.00 Net.**

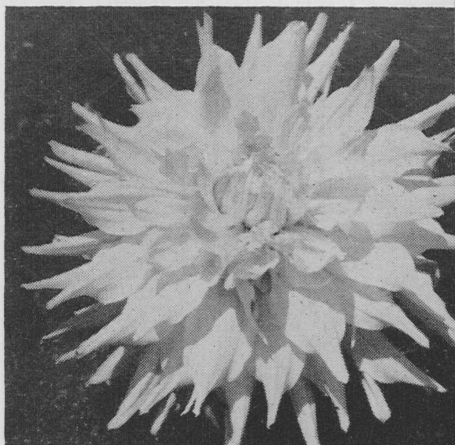
DR. CHARLES H. CONNORS (Lloyd) B.S.C. Pink. Size $7\frac{1}{2}$ " x 5", carried half facing, on strong stiff stems, 7 to 12 inches in length. Health, substance and floriferousness, excellent. Winner of Leonard Barron Memorial Trophy for the best B. seedling. Scored 85.1 in Midwest Trial Grounds in East Lansing, in 1957. **Roots, \$10 Net; Plants, \$3.50 Net.**

SARAH W. (Ruschmohr) The real blazing red St. Cac miniature we have all been waiting for. Blooms $3\frac{1}{2}$ " x 2" on 6" to 12" stems that are wiry and excellent for arrangement purposes. A floriferous bloomer on 5' bushes. This was entered in 5 A. D. S. Trial Grounds and scored 85 and better in all 5 Trial Grounds, winning the D. W. Hart Medal for the highest scoring miniature in the A. D. S. Trial Grounds. Winner as the best miniature seedling in the National Capital Show in Washington, D. C., 1958. Root stock is somewhat limited and only 1 root to a customer at **\$5.00 Net. Plants, \$2.50 Net.**

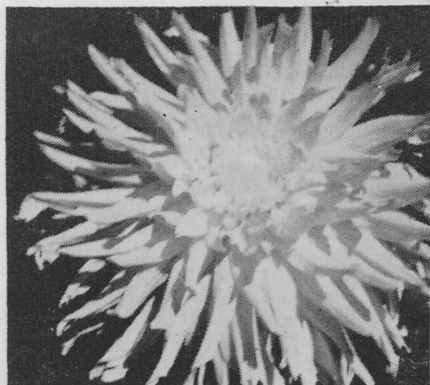
Plant Our Extra Choice California Seed.
20 for only \$1.00 60 for \$2.50 125 for \$5.00

RUSCHMOHR DAHLIA GARDENS

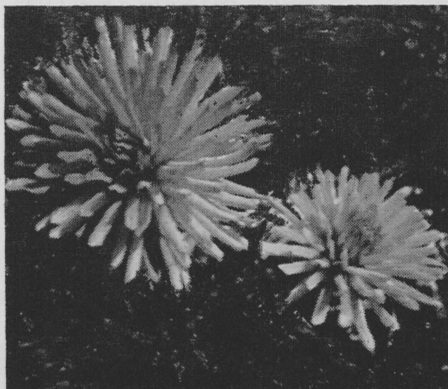
38 Vincent St. Rockville Centre, L. I., N. Y.



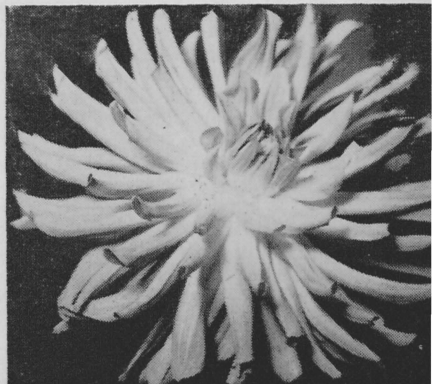
Autumn Gold, A — S.C.



Tina Marie, A — St. C.



Sarah W., Min. St. C.



Charles H. Connors, B — S.C.

"WEST COAST NEWS"

By Dr. J. R. Brandon, Jr., 3437 Gravenstein Hwy., So., Sebastopol, Cal.



Dr. Julian R. Brandon

A. D. S. Pacific Coast Editor

"Best in Show"

At some of the shows we have visited, the "Best in Show" winner is easily topped a good part of the time by anywhere from one or two to a half dozen or more blooms. At most shows "Best in Show" is exactly that.

In the latter case the judges make notes of the unusually fine blooms they see as they judge in the various sections and classes. After all other judging is completed, they go back and forth looking at these exceptionally fine blooms until, by a process of elimination they have narrowed it down to two to four of the very best. These are then very carefully scored and compared and the winner chosen.

At other shows, not many it is true, AN ENTRY MUST BE MADE for a "Best in Show" class. This LOOKS O.K. but actually is about as sensible as hail in a wheat field.

A beginner or an amateur may have the knowledge, the knack and the good luck to grow dahlias exceptionally well. But he may be only a mediocre judge of dahlias. The bloom he enters in the best in show class may be the one HE thinks is the best he has at the show. Yet I have heard judges tell the exhibitor that if he had entered some other one of his blooms he would have easily won the Best in Show.

Again, the exhibitor may be most anxious to win Sweepstakes in his class. He knows that he will win sure points if he enters one of his most perfect blooms, for instance, for Best Formal Dec. So that's where he enters the bloom and either does not exhibit a bloom for Best in Show or he enters a SECOND BEST BLOOM for Best in Show. He is not permitted to enter the same bloom in two classes.

Our good friend Emil Feux de la Coix, of Los Angeles, points out another practice that is even sillier than our cat starting to lick up the white paint from the can because it looks like milk. He points out how ridiculous it is to award a Best in Show to a new seedling that is, perhaps a mutation which will revert to type the following year.

Certainly, if we insist for a very good reason that the A.H.A. Medal be awarded only to a new variety that is three or more years old, we should apply the same time rule to Best in Show. We agree with Emil that this award should go only to an established variety.

"And Speaking of Emil"

Probably the most unusual and most fabulous dahlia personality we have ever "met" is the above mentioned Emil Feux de la Croix, of Los Angeles. At the time we first corresponded with Emil, he was just out of his second long stay in the hospital. He was on his way home from his FIRST long stay when a car or truck (we forget which) hit the ambulance broadside and he was detoured right back to the hospital.

That he is highly durable is evidenced by the fact that shortly after finally getting home from the hospital, too impatient to wait until he could get the heavy lumber delivered, he packed home on his back in a number of trips, the lumber for his greenhouse and lath-house.

A photo shows Emil to be built upon the general lines of a Sherman tank or a retired wrestler, but with not too much of the thickness in the middle.

He is as direct in his approach to anything as a charging rhino . . . and just about as easy to stop.

Emil is not afraid to spend his money for lots of good new dahlias each year. He discards a great many old ones, keeping only those he likes. When we receive a letter from Emil we always think it might be one that WE had written. Tact is thrown to the winds. Emil always says or writes exactly what he thinks is necessary to say and not what he thinks people would like to hear.

We like his suggestion made in a recent letter that there be an INFORMATION TABLE at every show, where not only the visitors to the show could get their questions answered, but where ANY dahlia grower might get needed advice and information. We might mention that this was done at the last Orange County (Calif.) show, with Mr. and Mrs. R. L. Pyle alternating at the table.

We did this one year at the San Francisco Show and netted some 25 or 26 new members, in addition to giving out information to a number who later became members of our Dahlia Society of California.

Oh, Emil's age? Well he was undoubtedly winking at the girls about the time our future Pop was courting our future Mom. And we are not exactly a new model.

Emil gets quite cantankerous and belligerent at times, usually when he thinks that someone is not giving his real love, the dahlia, what is commonly known as a Mexican Stand-off. But he is really a kindly, lovable character who just can't stand seeing the dahlia kicked around.

Anyway, don't sell Emil short on his dahlia lore. He knows far more about dahlias than he admits, which, to say the least, is something of a switch among dahlia growers. Emil is a very unusual man.

San Diego News

We like the idea they have in this "City of the Navy" of having a "Get Together" of the San Diego Society once a year at the gardens of Paul Comstock, where tables have been set up for a picnic in the glass house and R. Paul Comstock supplies the cold drinks.

The members rave over the 10 acres of gardens, including the very large seedling bed, and swap dahlia lore (and goofer dust) with each other.

The event this year was held on September 6th. It was pretty much an all-day affair with a meeting of the Executive Committee being called at 2:00 p.m. by President Ruth Bishop. At this meeting members were invited to sit in and take part at discussions.

One of the big sensations of the San Diego Show was the "Largest in Show"

(Continued on following page)

NEW FOR 1960

RUTH ELLA. A-IC Mallow purple—Won two A.H.A. Medals and two Seedling Sweepstakes at East Bay and Inglewood shows, only shows where it was exhibited. Roots \$10.00 Net.

PEGGY LYN. B-FD Gold, overlaid with flame red. Won A.H.A. at Bakers Field, Sept. 26—also Medal and Seedling Sweepstakes at San Diego, and Seedling Sweepstakes at Orange County Show in Long Beach. A.D.S. Trial Garden Certificates, 1959, at Atlanta, score 85.2 and Tacoma, score 85.1. Roots \$10.00 Net.

HARRIET. Min Ball Dark carmine blend. Won two Seedling Sweepstakes and two A.H.A. Medals in 1958. A.D.S. Certificates, 1959, Atlanta, score 85.2, and East Lansing, score 85.1. Roots \$5.00 Net

Taking my blooms distances up to 500 miles to a show, I exhibited at 5 shows last August, winning Sweepstakes in Commercial Class at all, except at San Francisco where none was given. At this show I won the Best General Display.

To win like this you HAVE TO HAVE top blooms from healthy, top-quality stock, grown from disease-free, top quality roots. "It's the stock that counts."

Send for free catalogue today.

NAT C. LUNDGREN

123 Wood Street Santa Cruz, Calif.

red seedling of R. Paul Comstock. It an 15½ x 9½. It has not been released as yet but will be one to watch for.

San Francisco has its "Flying Jeweler," known in aviation circles the world over for his habit of closing up shop and hopping off in his light plane for Europe or a trip 'round the world. Santa Cruz has his counterpart in Nat Lundgren, the "Travelingest" dahlia grower, who drove 500 miles to the San Diego show with his blooms. His seedling, **Peggy Lyn** was American Home Achievement and A. D. S. Seedling Sweepstakes winner at this show.

He also drove the nearly 400 miles to the Ingelwood Show, where his seedling, **Ruth Ella**, also won the A. H. A. Award. One of his trophies this year was a real special one, topped with a covered wagon. This was, if we are correctly informed, at the Orange County Show at Long Beach, where he was awarded the trophy for being the "Champion Dahlia Traveller." Nat covered some 2,500 miles in two trips within two weeks. A hop to Seattle or Vancouver, for Nat is "just a breeze."

Which brings us to Dirk Schroeder, one of the West's leading judges, and a close runner-up to Nat as "Champion Dahlia Traveller." Dick and his wife just about covered the entire West Coast getting 'round to the shows and dahlia gardens. Dick did a great deal of judging this year.

The Schroeders paid us their usual very enjoyable visit. We learned that their judging trips had not prevented them from taking time out to do some very successful exhibiting. At San Mateo Show, for instance, out of a total

of 37 entries they made, their score was 22 1sts, 11 2nds and one 3rd.

We commented to them that we had not had our usual number of visits from John Gaylord and his daughter. Dirk told us John had been doing some considerable travelling himself, having judged at more shows than ever.

Hall of Flowers

On Monday, August 17th, Ground Breaking Ceremony was held for San Francisco's new "Hall of Flowers" in Golden Gate Park. This represents a great achievement and a great victory for the numerous flower societies and garden clubs which form "San Francisco Flower Show, Inc."

The beautiful structure, which will cost close to a half million dollars will provide ideal meeting places for the various flower societies and just about perfect facilities for holding shows. Not the least of its advantages will be the fact that the exhibitor can back his car or truck right up to the door AT GROUND LEVEL, with no carrying or climbing of many stairs as in the past at San Francisco's City Hall.

Where in the past, parking facilities for the big San Francisco Flower Show were almost non-existent, there will be almost unlimited parking facilities at the Hall of Flowers.

Present at the Ground Breaking Ceremony were Mayor Christopher, Mr. Roy Hutchinson of the Park Department, Mr. Brendell, President of the S. F. Flower Shows, Inc., Mr. Alfred Stettler, of the same organization, Mr. and Mrs. Glen Mack, Mr. and Mrs. Dan Buckley, Mr. and Mrs. Frank Nager, Mr. and Mrs. Dirk C. Schroeder, Mr. Kimball and a number of others from the Dahlia Society of California. The Hall of Flowers will be completed in time for the 1960 San Francisco Flower Show.

A.D.S. President in S. F. Bay Area

Bert Pitt, A. D. S. President, timed his visit to California to visit some of the best of our far western shows. He judged at both the Oakland and San Francisco Shows.

Dr. Bruce Preas, the '56 to '58 President of the A. D. S. was another visitor at the Oakland Show and was also a visitor at the Pacific Coast Trial Gardens, in Oakland, in which he showed great interest.

DEE-CEE DAHLIAS

Our 1960 Introduction

EL CLEMENTE—"A"—I.D. or S.C.

Dark Blend, Spirea Red on Yellow base

10" to 12" Roots \$15.00 Net

Try Our Truly Field Grown Roots

Write for Price List

Dee-Cee Dahlias

547 Runnymede, Palo Alto, Calif.

A couple of our judges, visiting here at the farm, mentioned the names of Troy Cloinger, Carl Ludemann and Mr. Hillman as three exhibitors who have forged to the front in the quality of the blooms they exhibited. As one judge expressed it, "With a little more experience in showmanship and arrangement and the very high quality of their blooms, these three will be the ones you have to beat in future shows."

Jim Ryan, of Jas-Mar Dahlia Gardens has enjoyed a very good season. His ten best sellers, with the exception of **Vera Seyfang** were all U. S. A. introductions. He adds "Have had exceptionally good results from the advertising in The Bulletin."

Mrs. Ryan, Mary and their daughter, Barbara visited the Garden Station Plaza Show, in New York, where she had the pleasure of clerking, and the Washington, D. C. Show, where she was asked to judge.

His letter went on, "One of the grandest fellows in the Commercial Dahlia Business, Dewey Mohr, of Rushmohr Gardens, met them at the airport about midnight and took them to their hotel. The next day he and his wife drove them about 175 miles around Long Island and New York, showing them all the gardens and sights."

"I have received two letters from readers in the past week expressing their pleasure of the West Coast Section. It is a boost to the West Coast. Keep it up."

From Larry Sisk, Southern California's champion press agent, we get a letter plugging for visitors to the events in his part of the state for 1960. He mentions that he believed that the Central Valley Show (Bakersfield) was the most beautifully staged of all, being held in the Fine Arts Gallery, with its walls lined with fine paintings.

A wonderful four page letter from the Murrys . . . Lynn and Maxine . . . , owners of Miller Dahlia Farms. They are still working like dogs getting their new place in shape. Have five acres in dahlias this year and will enlarge on this in 1960. They will be represented in Bulletin advertising columns in the spring.

From what they are installing and building they should have as fine a commercial dahlia set-up as can be found anywhere. And it simply could not happen to two nicer people.

San Leandro Dahlia Show

If there is any town whose name is synonymous with fine dahlias it is San Leandro. Nowhere does the Chamber of Commerce, Civic organizations and the merchants of a town go more "all out" for a show than at San Leandro.

Despite the loss of a large part of their membership with the formation of the new East Bay Dahlia Society, in Oakland, the San Leandro Show was bigger, better and more beautiful than every with an astounding fourteen in the novice class. Just so long as a society continues to get new growers it will continue to grow and thrive.

Just about everyone went away from the show talking about Jim Rafferty's container of 52 A blooms.

Best Dahlia in Novice Section, **Maureen Connelly**. Largest and most perfect, **Comm. Max J. Leonard**, both by Broderick Jones. Best in Amateur,

SWAN ISLAND DAHLIAS

Presents

3 New Dahlias for 1960

CAY (AID) White (Johnny McEvoy's new seedling) \$10.00 Net

CENTENNIAL JOY (MIC) Autumn (Swan Island seedling with score of 85.6 at East Lansing) 3.00 Net

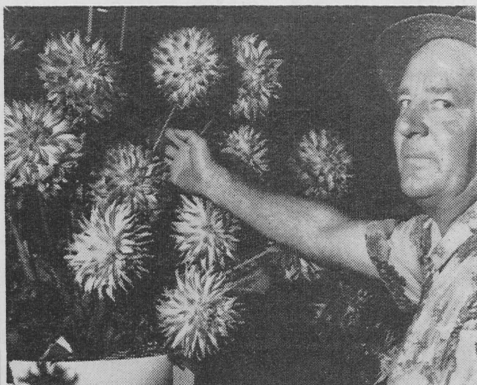
SWAN'S PINK ECHO (BFD) (Swan Island variegated light pink sport of Eastern Echo) 5.00 Net

These and loads of other varieties pictured in our 32 page color catalog ready January 1. A real collector's item.

Send 25c for your copy today.

SWAN ISLAND DAHLIAS

Dick and Shirley McCarter
Box 901 ADS Canby, Oregon



PEGGY LYN, B, I. D., Flame

Color, combination of Carmine Red and Primrose Yellow. Size, $7\frac{1}{2}$ " by 5". Won A. D. S. Certificates at Atlanta, score 85.2 and at Tacoma, score 85.1. Also won A. D. S. Seedling Sweepstakes and Am. Home Award at San Diego and other shows. Originator, Nat. Lundgren, shown at right. (Photo, Larry Sisk.)

First Lady, Largest and Most Perfect, **Kelvin**. Won by Robert Hilberg. Best in advanced Amateur, **Kidd's Climax**, by Troy Cloinger. Largest and Most Perfect, **Kelvin**, by Walter Hansen.

Largest and Most Perfect in Show, **Croydon Masterpiece**, by Robert Hilberg. Best Dahlia in Show, **Silver Wedding**, by Gertha Stowell. Best Bicolor in Show, **Dorothy H.**, by Walter Hansen. Best 1958 Seedling, **Lavender Lace**, originated by Henry Boehm and shown by Walter Hansen.

DOWN THE DAHLIA PATH

We grow the new and the best of all Dahlias, from all countries. Please do send a post card for our good descriptive catalog.

Mrs. Emelene M. Cole

194 NORTH 9TH ST.

COOS BAY

OREGON

Beginners Sweepstakes, Mrs. G. Wright; Novice Sweepstakes, Paul Reno; Most Artistic, Joseph Enos; Amateur Sweepstakes and Most Artistic, both by Troy Cloinger; Most Outstanding Display, James Rafferty; Highest Points in Arrangements, Mrs. James Rafferty.

California State Fair Show

At our State Fair Show there is an exhibit competed for by the counties rather than by the individuals, although naturally some individual or individuals must set up an exhibit for their county. Schroder, for San Mateo took first, Jim Rafferty for Alameda County took second, with Contra Costa County third and Santa Cruz Co., fourth.

A new exhibit for the State Fair was displays of 400 square feet. Woodrow Walkup took first, Charles and Mary Kurtz, second, Troy Cloinger, third.

We are informed that California's prolonged drought with many spells of blasting hot winds, resulted in the cancellation of plans for a Fresno Show and also of the show of the Sacramento Dahlia Society. To appreciate what those hot winds could and DID do, I watched the FOLIAGE on my cucumbers, corn and green peppers, and some of my tomatoes just dry up and turn yellow and brown while I literally FLOODED THE GROUND with irrigation water.

Mr. and Mrs. Wm. Koenig, dahlia people from Pittsburg, Pa., visited the gardens of John Gaylord on September 26th. They were much impressed by John's blooms. John did not have an opportunity to show them around as he would have liked to do as, they had to leave early the next morning.

We got talking to our talking cat. I was "beefing" at the way just about EVERYBODY growing dahlias waits until the last minute of the last hour of the day after the last day to send in their news, show reports, etc.

"Well," said Blackie, as he winked at Hooks, our cat with the Emily Post table manners, "Did you ever know a dahlia grower who drove an ambulance for a living?"

"No," I replied, "can't say I ever did." "You won't," said Blackie, "if they did have a dahlia growing ambulance

driver, all his customers would be D. O. A., which means dead on arrival." "And," he added, "I never heard of YOU driving an ambulance."

Which reminds us to remind you that I am starting NOW to start trying to get material for the February issue.

And that's 30 for this issue.

Challenge Cup Awards in Holland

The dahlia season in Holland was extremely dry. Very little rainfall came between May and October. For this reason, the National Dutch Dahlia Society thought it best to cancel their show.

But the judgments for the Challenge Cups were held on a weekly basis in Haarlem up to August 31st. Judgments for the best cut-flowers were held on Sept. 7th. The Silver Trophy for the best Trial Garden Novelty was given at the end of the judgments Sept. 15th. The blooms at the Trials looked very well, reported Mrs. D. Eveleens Maarse on Oct. 2nd. She added that the summer of 1959 was the driest they had ever experienced in Holland. Usually the Dutch summer is rather cool and wet.

Following are the results of the Dahlia Judgments for the Challenge Cups in the Netherlands, made on Aug. 31st, 1959:

Challenge Cup for the best Dutch Novelty 1959, over six inches. **Penelope** (Maarse) 17.31 points.

Challenge Cup for the best Dutch Novelty 1959, between 4 and 6 inches. **Disneyland** (Maarse) 16.10 points.

Challenge Cup for the best Dutch Novelty 1959, under four inches. **Park Princess** (Maarse) 16.49 points.

Challenge Cup for the best Dutch Pompon, any size. **Amusing** (Ludwig) 16.73 points.

Challenge Cup for the best 1959 Novelty of foreign origination. **Lavengro** (Barnes, England) 18.50 points.

Challenge Cup for the best keeping variety as a cut-flower, blooms over six inches. **Promise** (Bruidegom) 8.57.

Challenge Cup for the best keeping variety as a cut-flower, blooms under six inches. **Horn of Plenty** (Bruidegom) 9.29.

Challenge Cup for the best keeping variety as a cut-flower, Pompon any



LAVENGRO, Dutch Cup Winner

This bronze tipped mauve, "B" size, Inf. Dec. originated by A. T. Barnes of England. Won in Holland Challenge Cup Trials for Fa. D. Bruidegom, Baarn, Holland, for best Novelty of Foreign Origination. Also won at Wisely, England.

size. **Clarity** (Bruidegom) 8.57.

Silver Dahlia Challenge Trophy for the Dutch Novelty that scored highest points on Aalsmeer Trial Garden. **Top Affair** (Bruidegom).

JAS-MAR DAHLIA GARDENS

Largest Specialist Growers
West of Mississippi

JAS MAR'S BARBARA ANN, Flame, Blood Red and Yellow, size 7 by 4 inches, "B." Profuse bloomer. Exceptional in its class. A. D. S. Certificate at Atlanta, score 85.4. Roots, \$10.00; Plants, \$3.00.

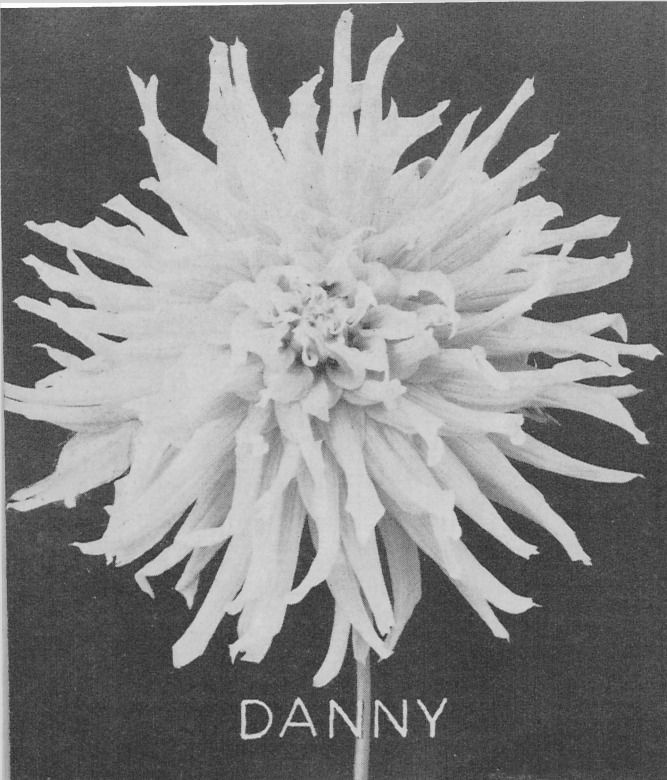
ELIZABETH LILLIAN PROOPS, "A." I. C. Pink. New release from Australia. Plants, \$5.00.

Have Long List of
and New Australian Varieties

JAS MAR DAHLIA GARDENS
110 S.E. 139th Street

AL 3-2638

Portland, Oregon



DANNY (Marker-Frank-Dahl), A I.C., M, Bloom 10 x 7, Bush 4 1/2 ft. The most beautiful pink released in many years. Rhodamine pink with a long list of winnings. Scored 85.9 at East Lansing, 85.5 at Farmingdale and in the Pacific Northwest at Seattle, Wash. it was the most outstanding in the garden scoring 85.533. It is a good grower with deep full blooms of perfect form winning everywhere shown in 1959. Won as best cactus in the show in Pittsburgh, also Bergen Co., and at the A. D. S. in Paramus. Also won as the best single bloom cactus in Washington, D. C. Show as well as best 3 blooms in the Cactus Class, and Queen of the Show being awarded the trophy given by the wife of the President of Mexico and presented by the Ambassador of Mexico. In 1958 won as best Cactus in the Open to All in the A. D. S. Show as well as at Paterson, also many firsts in Irvington and local shows. What a record for such a beauty! Stock limited.

Roots, while they last, \$15.00 NET; Plant, \$5.00 NET

1960 INTRODUCTIONS

Net on Roots and Plants

Abbreviations

Abbreviations after Size and Type

E—Early. M—Midseason. L—Late.

DAHLIADEL 14



Again Da
in Intro
many typ
small, and Seedling
West and East coas
plete 48 page catalog
tural instructions F
in February. Additi
this Adv. on request

CALIFORNIA GR

From one of our bes
ers in California i
from named varie
best seed-bearing

- #1—Cactus Seed, Str
Incurved
- #2—Semi-Cactus See
- #3—Cactus and Semi
Mixed
- #4—Formal Decorativ
- #5—Informal Decorat
- #6—Formal and Infor
Seed Mixed
- #7—Cactus, Semi-Ca
rative Seed Mixe

All Seed Lister

20 Seed, \$1.00; 100

Postpai

DAHLIADEL GR

- # 8—Collarette Seed
- # 9—Orchid Flower-
ing Seed
- #10—Miniature Seed
- #11—Single Seed

No postage and pa
on seed or

Dahlia Growers' Supplie

Don't overlook NATRIPHENE to pro
portions of your clumps from fungus.
page of DAHLIA GROWER'S SU
\$1.10 package of NATRIPHENE, p
makes 16 gallons of agricultural fu

WARREN W. MAYTROT
Vineland, New Jersey

LIAS

Dahliadel

Dahliadel leads
uctions, offers
es, large and
ys from both
ts. Our com-
including cul-
REE. Ready
onal copies of
t.

OWN SEED

st seed grow-
in a mixture
ies with the
qualities.

ight and

d
-Cactus Seed

e Seed
ive Seed
mal Decorative

ctus and Deco-
id

d Above
o Seed, \$5.00
d

OWN SEED

35 Seed \$1.00

35 Seed \$1.00

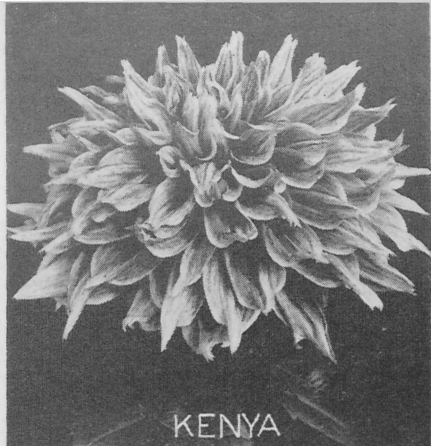
35 Seed \$1.00

35 Seed \$1.00

eking charge
ers

s
tect cut
See our
PLIES.
ostpaid
ngicide.

T



KENYA

KENYA (Veile-Dahliadel), A ID, ML, Bloom 11 x 6, Bush 4½ ft One for the big bloom class as the originator believes it to be as large as any dahlia in existence today. Grown side by side it was larger than Arthur Godfrey. An Informal Decorative with large wavy petals of bright nasturtium orange heavily suffused rose early, with this suffusion diminishing noticeably as the season advances. Good bush growth, excellent foliage and a continuous bloomer. Picture taken Oct. 12 shows the good full centers and great depth. Has already won several firsts in its class and certified at Atlanta with a score of 85.5.

Root, \$15.00 NET; Plant, \$5.00 NET

RED TOP (Frank-Dahliadel), M FD, M, Bloom 2½ x 2, Bush 3 ft. A bright cherry red Miniature Formal Decorative that does not fade. Fine form with good centers. Scored 85.5 at Farmingdale and won the English Medal as the most outstanding Miniature in the Open to All Class in the A. D. S. Show at Paramus. Also won the Seedling Sweepstakes in Washington, D. C., scoring over 85 and the best in single bloom and 3 bloom class in Washington and best in single bloom and 3 bloom class in Pittsburgh.

Root, \$5.00 NET; Plant, \$2.00 NET



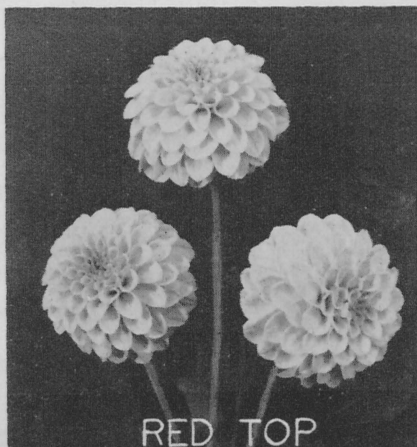
SAN JUAN

SAN JUAN (Gaylord-Dahliadel), B SC, E, Bloom 8-9 x 5, Bush 5 ft. Most striking fire red with golden or lighter reverse showing slightly as the petals curl giving that orange red effect. Real early. A strong healthy grower with good branching habits and wonderful stems. Certified at Atlanta and scored 84 in East Lansing. Also scored 85 at Madison, Wisc., our Badger State Trial Grounds. Certainly the most prolific in our gardens and attracted lots of attention. A big B Dahlia that can easily be grown up to 9" for the new size limit for "B" Dahlias.

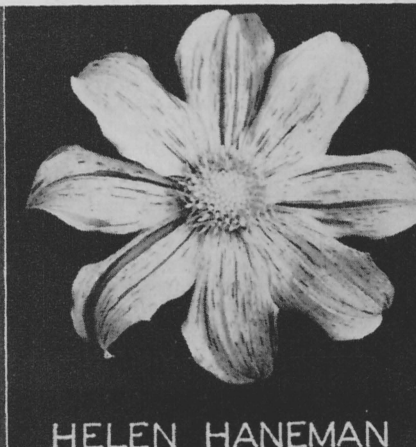
Root, \$10.00 NET; Plant, \$3.50 NET

HELEN HANEMAN (Dahliadel), Single, E, Bloom 5, Bush 5 ft. A most striking variegated Single, favorite of Judge Haneman's wife, and named in her honor. Soft amaranth rose or mauve striped and speckled peony purple. Strong rugged grower with excellent long stems. Early and profuse. Much admired in the garden and wonderful for arrangements. A real addition in this class, as it is most consistent and evenly variegated and behaves well under varied conditions.

Root, \$3.00 NET; Plant, \$1.50 NET



RED TOP



HELEN HANEMAN

DAHLIA PEOPLE

Here, There and Everywhere



From Clement W. Ballay, Palo Alto, Calif., "After 40 years of intensive dahlia growing, I did not grow even one this year. I may plant a few next spring, varieties I 'loaned' to friends. I will not sell dahlias ever again. But I have really enjoyed my leisure this summer. A change of scenery and labors is good for me, at my age, I guess." (One more commercial dahlia man retiring. And one who has introduced as many, if not more fine, large dahlias, in the past years as any grower, east or west. Our very best to you Clement W. Ballay, in the leisure years which you have so justly earned. We only wish that there were others coming along to enter the commercial dahlia business and do it the honor that you have done it in the past 40 years.—Editor)

G. F. Drayson, Editor of the National Dahlia Society, England, Yearbook reports as of Oct 10th: "In England, we have the driest, sunniest and warmest summer and autumn for two hundred years. Even this month, which is on the average, the wettest, we have had temperatures between 70 and 80 degrees every day and almost maximum sunshine. One result of all this adverse weather has been severe attacks of red spider mites.

"I have warned all readers of the Yearbook of the possible consequences of such a season of dry, hot weather, and have published pictures of the mites. But, unfortunately, many growers have

not recognized the cause of their trouble and have attributed it to virus. Virus has been a subject almost 'taboo' here. I had great pleasure in reading the very informative Dahlia Virus article published in the May and August issues of your Bulletin. It will help to educate your growers and I intend drawing attention to it, in the National Dahlia Society Yearbook. The article, on the whole, is in agreement with the findings of the plant pathologists and virologists in Europe." The American Dahlia Society, and we are sure Author Mildner, would be glad to extend publishing rights to Mr. Grayson for the Yearbook to reprint this Virus article.—Bulletin Editor.

Jan M. Ballego of Leiden, Holland, writes under date of Sept. 16th, last: "Due to the very dry weather conditions, the National Show in this country has been cancelled. Not all growers had their main crop of dahlia blooms at the time of the National Show date. Since it was impossible to supply the usual quantities of blooms of the usual quality, it was decided not to hold the show."

G. F. Drayson says that the Dahlia Show in London was good. He says some of the varieties which stood out were: Arthur Hambley, Iva Jean, Dantino, Radiance, Gina Lombert, (High Standard. He reports that he has grown nearly 100 varieties of the most recommended novelties, and that UCHUU was indeed as large as described. Mrs. D. Eveleens Maarse, of Maarn, Holland says: "The show in London was excellent. Especially the amateurs had marvelous blooms. We have an impression that England had more rain than we did here. Also we are sure that the British amateurs had looked after their plants very well, in spite of the dry season. Traders also had good flowers. The Trials at Wisley were excellent."

(Continued on following page)

Dirk C. Schroeder, President of the Dahlia Society of California, gives us a new slant on the cause of the dry season: "Sorry to hear that the weather was not so good in the East, either. I don't know what is going on 'up there.'" Possibly they are rocking too many holes in the protective umbrella over our atmosphere and gardens with those Atomic bombs. I was talking to one of my doctor friends, who is a cancer specialist. He seems to think that some of the colors in dahlias may be more susceptible to certain rays of the sun, at least west of the Rocky Mountains. As to some California varieties burning or bleeding when grown in the East, this may result from too many gamma rays in your atmosphere. And I'm coming to think that some of the varieties do better, or produce better blooms every second year. Maybe dahlias like a 'rest' period like some other plants. We have lots to learn yet about growing dahlias."

•

The California Dahlia Society will be the "host" society for the Southwest Dahlia Conference on Feb. 20 and 22, 1960. At least 150 dahlia folks are expected to attend. Committees are working and it looks like the gathering in San Francisco will be well worth attending.

•

Harvey H. Robens, of Chagrin Falls, Ohio writes: "This has been a very poor year for us. First, it was too hot and dry, then we had a lot of heavy rains in late summer. At that time the dahlias stood in pools of water for days. We had planted about 6000 hills, and because of the standing water, lost some 1000 clumps. As we dig, we find some god sized clumps and others which are about average."

•

Mr. J. F. Ch. Dix, now 78 years old, has retired as president of the Netherlands Dahlia Society. He has been its head for many years. He was associated with the late D. Bruidegom and the late H. Hornsveld, in founding the society in 1930. Mr. Bruidegom was the society's first president. Mr. Dix is succeeded by M. Dehker, a former eminent dahlia grower and now editor of the Weekly of the Royal Bulb Growers Association.

(Continued on following page)

Announcing for 1960 KIMBERLEY JEWEL

Born near the diamond mines of Kimberley, South Africa, purchased, cut and polished for setting in the gardens of American connoisseurs by Summit Gardens.

This exciting B size cactus has varying color phases like the scintillating facets of its diamond namesake. During temperate weather it is the most gorgeous red and white Dark Blend you ever laid eyes on—only the white is in the center and the outer two-thirds of the cleft petals are deep, garnet red. In extremely hot weather and again in the fall it changes to a darker blend. It is truly two dahlias in one!

We set a new record with the jewel in '59 midwestern shows—a record that even our fabulous Nita did not achieve. We showed the jewel in seven shows in Illinois, Wisconsin, Iowa, and Pennsylvania (Midwest at Pittsburgh) and won American Home Medals every time.

We were not able to offer the jewel for pre-introductory nation-wide testing and trial distribution because the stock is quite limited. We will undoubtedly sell out, so play safe and order early from this ad.

Per root, \$15.00, net

We also sell a lot of other fine show dahlias. Our 1960 catalog will be ready in January; it's yours for the asking.

SUMMIT GARDENS

G. L. PIERCE

P. O. Box 567

Glen Ellyn, Ill.

Dahlia People (Cont'd)

From L. O. Ballego, Leiden, Holland: "We had a very hot season here. Fortunately, we are located in the Western Polder District and have plenty of water in the canals, to water our dahlia fields. Others, who were not so fortunate, had a very poor growing season. It is strange about this weather pattern. Last season we were nearly flooded out by continuous rains. This year, we nearly dried out. But, thanks to the Polder System (canals), we can overcome such dry weather conditions."

The monthly Bulletin of the Men's Garden Club of the Chicago district, in its recent issue says "J. Louis Roberts, our president in 1941-42, admired and respected by all who knew him, answered he call of the Master, July 17th, 1959. He was a world authority on the Dahlia, and was a Vice-President of the American Dahlia Society for many years. He will be greatly missed by all of his many friends."

Sophia Roberts writes us: "I feel so honored that my sweetheart's picture was on the cover of the August Bulletin and that you said so many nice things about him. Bless his heart, how I miss him, particularly right now in the middle of the dahlia show season. We toured the shows together for so many years and made so many wonderful friends. These trips meant so much to him, for years and years." (We miss him too, Soph.—L. B. D.)

Another sad note. Rachel Venner of the Venner Dahlia Gardens, Portland, Ore., writes to Dr. Brandon, our West Coast Editor: "I won't be doing any more dahlia advertising. We are going out of the dahlia business and going into business as florists. Took a course in floral designing and here we go in a new line."

Who will answer these Questions for E. T. Corning of Seattle, Wash.:

(1) "Is there a list of Derrill Hart Medal Winners since the beginning of the awarding of this medal? I am wondering how many of them are still being grown. I, and probably many others, would be interested in knowing."

(2) "Would it be possible to take a dahlia like NITA and show just how

experienced judges arrived at the scores which it received, from 85.2 to 86 in the A. D. S. Sweepstakes in the many shows across the country? If this sounds like I think all scores should have been the same, I do not wish it to do so. What I can't understand, is that the score of most of the better dahlias come out with the judges' score average of 85 or 86. Does this involve some number juggling or rehashing by the judges both at the A. D. S. Trial Gardens and for the Seedling Sweepstakes at the shows?"

(3) "Can some experienced dahlia judge please tell me their idea of a perfect stem? Also, if possible, give me some idea of their idea of the maximum qualities of a dahlia which make it score high in the characteristics of color, form, and distinctiveness for a dahlia which comes to an over 85 point score on the score card? I have other questions, but that is all for now. I really would like the opinions of experts on these matters. Send your answers to the Editor, please."

A welcome visitor to several eastern shows, including the A. D. S.—N. J. Joint show at Paramus, N. J. was E. Henry White, proprietor of the White Dahlia Gardens of 6720 N. Albina Ave., Portland 17, Ore. We talked with Mr. White and saw pictures of his garden on a prominent street in Portland. He says, as others have done or are about to, that he may have to move his garden due to the increase in value of the land now used. That's some kind of progress, when ground becomes more valuable for building homes than to use it for a dahlia garden.

If you issue a Dahlia Catalogue, or list, please send a copy of same as soon as published to Editor Dudley and another copy to Dr. Charles H. Connors, Chairman of A. D. S. Nomenclature Committee, 115 N. Sixth Ave., Highland Park, N. J. He needs your list to keep the Nomenclature List up to date. Thank you.

The Dahlia Show in Germany was also a victim of a bad growing season and was cancelled. Dutch growers have always had entries in the German show but not in 1959.

It's what a Dahlia Man learns after he knows it all, that counts.

There's nothing like hard work in a dahlia garden—and wouldn't it be terrible if there were.

Seems like we Dahlia Folks never had it so good—or had it taken away from us so fast.

A dahlia agriculturist is a farmer with a station wagon.

Education for Dahlia Men is going forward from cocksure ignorance to thoughtful uncertainty.

HOLLAND'S

most complete list of 1960 novelties and choicest varieties from all over the world.

Elaborate descriptions of over 600 varieties in our

New Catalogue for 1960

Please apply by airmail for this finest of all dahlia catalogues, giving full information how to import our dahlias.

FA. D. BRUIDEGOM
BAARN, HOLLAND

One of the Finest Assortments

Dutch-Grown Dahlias

From All Countries of the World

HEALTHY STOCK

GUARANTEED TRUE TO NAME

Apply by airmail for our New Illustrated Catalogue for 1960.

World's Best Dahlias

WM. DE RUYTER (Since 1919)
OEGSTGEEST (Holland) P.O. Box 9

NEW DAHLIAS

By Stanley Johnson

PENNSYLVANIA, I.D. An easy growing dahlia; color Current Red; of size, 8" to 9". Attractive, dark foliage with stems almost black color; insect and disease resistant. The sturdy plant grows to height of 4 feet. Winnings MANY. 3 American Home Achievement Medals; 3 A. D. S. Seedling Sweepstakes Awards, and Firsts in open competition, 1959.

Quality High and Prices Low
Plants \$3.50 Net Roots \$10.00 Net

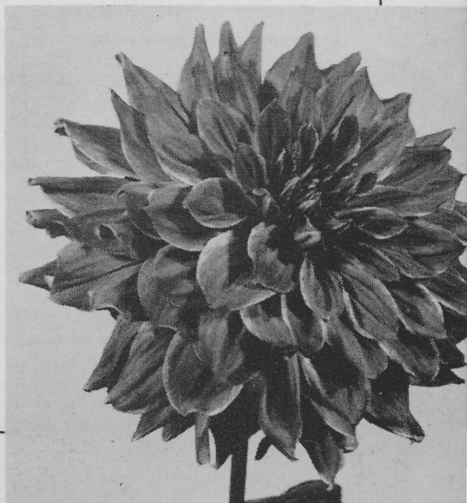
New Pompons and Miniatures
Best of New Introductions

Write for **FREE** Catalogue

PENNYPACK

Cheltenham, Pa.

Pennsylvania, "A" I. D. Red



The AMERICAN DAHLIA SOCIETY, Inc.

Organized May 10, 1915



"The Society is formed for the purpose of stimulating interest in and promoting the culture and development of the Dahlia; to establish a standard nomenclature; to test out new varieties and give them such recognition as they deserve; to study the diseases of the Dahlia and find remedies for same, and to disseminate information relating to this flower; to secure uniformity in awarding prizes at flower shows, and to give exhibitions when deemed advisable."

BERTRAM E. PITT, *President*

9730-123rd St., Richmond Hill 19, N. Y.

EDWARD B. LLOYD, *Secretary*

10 Crestmont Road, Montclair, N. J.

HARRY A. DREYER, *Treasurer*

431 Lincoln Ave., Ridgewood, N. J.

LYNN B. DUDLEY, *Editor, Bulletin*

25 Irving Pl., New Rochelle, N. Y.

Editorial

There is much about the weather in the other columns of this issue. All seem to agree that in the U. S. and Europe the weather pattern was most unusual and discouraging to dahlia growers. No one has discussed the reasons. Tex Antoine, TV weather announcer for Con-Edison, locally, was the one who gave us the answer, perhaps without intending to. He said that the activity of sun spots were greater this past summer than in many years. He did not mention it, but the sun burns up

normally, over 800,000,000 tons of hydrogen every second. With the increase of sun spots, this consumption is enlarged, tremendously. And that extra radiation from old sol increased the heat on Mother Earth. Result, a hot, dry, humid dahlia season. Quid erat demonstrandum.

We congratulate the National Capital Dahlia Society on the booklet published recently titled, "Growing Dahlias." It contains valuable suggestions on culture, particularly to new growers, explaining in detail all the steps to better dahlia results. We believe that more dahlia societies could, to their own advantage, not only interest more young people in growing dahlias, but to help them in every way possible to grow and show better dahlias.

This is a very big issue, with reports from over 38 shows. Sorry that some of them had to be shortened. There is plenty of dahlia news and we try to print as much of it as possible. We thank all of the reporters for mailing reports promptly.

The Editor has put in more hours writing and assembling material for this Bulletin than for any in his experience. Much of it came in slowly. Advertising was late also, waiting for Trial Garden and Sweepstake reports to put in the copy. We hope the final result will please our readers. We also hope ground freezing holds off till mid November so we can get our dahlias dug, after the issue is "put to bed."

We are sorry, but at Bulletin time, we just can't write letters. Hope our correspondents will not get discouraged, waiting for replies. Before Christmas, maybe?

It's to Your **ADVANTAGE**
to **PATRONIZE** the
Advertisers in this Issue
Please mention this Bulletin,
when you do so

Nationwide Dahlia Society News

Burholme Horticultural Society

A most discouraging growing year for many dahlia growers but we were able to stage on September 16 and 17th a presentable show in the air conditioned Friendship Room of the Cheltenham Federal Savings and Loan Assn.—Philadelphia, Pa.

The American Home Achievement medal and A.D.S. Seedling Sweepstake Award was won by Stanley Johnson with **Pennsylvania** an informal decorative dark red, size 10" x 5" with novelty and distinctness of dark bronze foliage and stems.

The following varieties were the top winners: Surprise, Prairie Fire, O'David, Tidal Wave, Goody, Patricia Spollen, Master, Go American, Uchuu, Ned Seymour, Arthur Godfrey, Maureen Connelly, Juanita, Nita, Lady Ismay, Duet, Hazel Harper, Ginny Johnston, Joyce Gibbs, Diana Gregory and Margaret Williams.

The Pennypack Sweepstake Amateur Trophy was won by Glenn L. Stitzinger.

The arrangement classes with dahlias predominating were exceptionally good this year. Mrs. Edward H. Adam's entry won the Best of the Show.

Chic Hausmann—Publicity

Washington St. Dahlia Society

The Washington State Dahlia Society, held their 49th Annual Show, September 5th and 6th, in Normana Hall, South 15th and Kay Streets, Tacoma, Washington.

Despite previous wind and rain, the show set a record for number of entries of variety and quality.

The principal winners were: Grand Award, best Dahlia in the Show, **McDonald's Quill**, shown by Jack MacDonald, Bemerton, Washington. Second best; **Kidd's Climax**, by Clifford A. Taylor, Tacoma. Best five blooms, A size; **Marilyn Dale**, Catherine Miller, Bremerton. Best five blooms, B size; **Good Earth**, Myrtle LeMar, Tacoma. Best three blooms, BB size; **Miss Elsie Jane**, Clifford A. Taylor, Tacoma. Best Arrangement, **Nephos**, by 10 year old Sherilyn Ayler, Tacoma. Best Basket;

Miss Rose Fletcher, Florence M. Taylor, Tacoma.

Best Seedling, A.D.S. Seedling Sweepstakes Award and The American Home Achievement Medal, **Harrison**, A, ID Red, by Catherine Miller, Bremerton.

Best one bloom, Washington Origin; **Silver Wedding**, Jack MacDonald. Best three blooms, Washington Origin; **Silver Wedding**, Florence Raymond. Best three blooms, European Introduction; **Doge**, Catherine Miller. Best one bloom, Foreign Introduction; **Christine Aus**, Bess Owens, Seattle.

Largest, most perfect, **Croydon Masterpiece**, by Clifford A. Taylor. Smallest, most perfect; **Gold Dust**, by Bess Owens, Seattle. Best Dahlia by an Amateur; **Priscilla**, Ann Tuel, Seattle. Best Dahlia by Novice; **Kidd's Climax**, Maybelle Johnston, Seattle. Best Dahlia by Junior; **Fresco**, by Pauline Goodman, Tacoma.

—Florence M. Taylor, Corr. Sec'y.,
1420 South Stevens, Tacoma, Wash.

Kitsap County Dahlia Society

The 35th Annual Kitsap County Dahlia Society show held on August 20-23 was a very successful event, and it was very gratifying to note the large display of dahlias considering the exceptionally hot, dry weather that prevailed for at least six weeks prior to show time, and the abundance of black aphid and earwigs that growers were forced to battle in order to fill the show tables to overflowing.

The following are sweepstakes winners: F. D. Derrick, Kingston, Novice, with Golden Heart; Pablo Abellero, Seattle Amateur, with Silver Wedding; Vern Sandford Bremerton, Open Class Sweepstakes with Marilyn Dale; Largest nearly perfect dahlia in the show was Miss Prim and the smallest was a pom, Constant.

Also winning one or more blue ribbons were: "A size:"

Cactus: **Allways**, **Pride of Holland**, **Searchlight**, **Giant Spider**, **Frau Margarit Haase**, **Gold Coin**, **Seafair Princess**, **Flying Saucer**.

Semi Cactus: **Ballego Surprise**, **Art**

(Continued on following page)

Nationwide Dahlia Society News

Linkletter, Brema, Janet Becket, Black Monarch, Jane Lausche, Preas' Pride.

Formal: Miss Prim, Lavender Perfection, Croydon Dignity, Kidd's Climax, Silver Meteor.

Informal Decorative: Clariam Forever, Lavengro, Croydon Masterpiece, Night Editor, John Butterworth.

"B Size": Cactus: Florence Chadwick, Renaissance, Glorious, Hoek's White, Good Earth, Wagscahl's Gold-Krone, Donnette Robin, Juanita, Judy G., Broms Favorite. Semi Cactus: Dentille De Venice, Doge, Heimtland, Bacchus, Autumn Brocade, Eukenia.

At the annual banquet and fall meeting of the Kitsap County Dahlia Society, the following officers were elected for the year 1960: Vern Sandford, Box 930, Route 5, President; Nevan S. McKamey, 932 Lower Oyster Bay Road, Vice President; Mrs. Lawson Scott, 3007 Cascade Trail, Secretary; Mrs. Albert Ernst, Box 324, Route 2, Paulsbo, Wash., Treasurer.

Beginnings in January 1960 the meetings will be held the **third Thursday** of each month at the Camp Fire Girls Hall, 1109 Warren Avenue, Bremerton. The annual Christmas Party will be held at the above location on Friday evening December 11, at 8:00 P.M.—Andrew Babb, 911 Pacific Ave., Bremerton, Wash.

Dahlia Society of Kentucky, Inc.

Again we are very happy to report a very fine Show. Due to the hot and dry weather and a poor season, we really felt that we hadn't much to look forward to in the way of a Show this year, but we really had a surprise in store as many specimen blooms were brought in and we were able to stage a very colorful fine show.

The most outstanding blooms were Croydon's Masterpiece, Mary Elizabeth, Kelvin, Bertha Shone, 5 Star General, Surprise, Cherokee Beauty, Lynette Hawton, Hart's Whirlaway, Maffie, Nita, First Lady, Television, Prince Noire, Mrs. Eric Halford and Semi-Lake.

Television was the most outstanding entry in the Show. It was the Court of Honor winner and was shown by Rodman Hansbrough of Shelbyville, Ky.

Section 1, Sweepstakes was won by

Joe Hellmann; Section 2 Sweepstakes by W. F. Booker and Section 3, "B" Dahlias Sweepstakes by Rev. Raymond Lawrence of Shelbyville, Ky. Pons, Miniatures and Ball Dahlias Sweepstakes of the Show was won by Rodman Hansbrough. Largest bloom in Show was Arthur Godfrey by Rodman Hansbrough, of Shelbyville, Ky. Best 3 Red Dahlias in the Show were Mrs. Hester Pape, by Geo. Shee. Best 5 Red Dahlias were Maffie by Rodman Hansbrough. Largest Lavender Dahlia was Powder Puff by Mr. Hansbrough. Best Autumn "A" Dahlia was Croydon Masterpiece, by Rev. W. W. Stout. Best "B" Dahlia was First Lady by Raymond Lawrence.

The Derby entry winners were 1st, Powder Puff shown by Mr. Hansbrough; 2nd, Kemp's Memorial shown by Mr. W. F. Booker; 3rd, Autumn Blaze shown by Mr. C. W. Simbitzki. —Mrs. Louise Kleinjohn, Sec'y, 726 Barrett Ave., Louisville 4, Ky.

Portland Dahlia Society

The Society's 1959 Show, held Aug. 29-30 in Masonic Temple Ballroom was a most successful one. Don Allan, Chairman did a fine job.

Sweepstakes—Novice Division, Luther S. Cole; Amateur Division, Al Coufal; Advanced Amateur Division, Gladys Marshall.

Mastick Trophy — Best "A" Size in Show, Pirate Treasure, J. R. Beyerle; Francis C. Little Cup — Best "B" in Show, Wagshal's Goldkrone, Mrs. M. R. Samuelson; Gold Cup—Awarded by B. S. Chambers, Herman Runge.

Smallest Most Perfect Pom, Mrs. French, Mrs. Larry Jensen; McEvoy Trophy — Best "A" Novice, Nutley Sunrise, Mrs. J. R. McEvoy; DeVolder Trophy—Best "B" Novice, Wagshal's Goldkrone, Mrs. M. R. Samuelson; McEvoy Trophy—Best "A," Amateur, Croydon Masterpiece, B. S. Chambers; DeVolder Trophy—Best "B," Amateur, Juanita, Al Coufal; San Diego Dahlia Society Medal — 3 Blooms "A" Size, Great Show, Doris Johnson; Minnesota Dahlia Society Medal—5 Blooms "A," Cactus, Pacific Conquest, John Jenkins; Inglewood Dahlia Society Medal—5 Blooms "B" Cactus, Priscilla, C. E. Richter; Greater St. Louis Dahlia Society Medal—5 Blooms "B" Decorative,

First Lady, Al Coufal; North Jersey Dahlia Society's Medal—Best Basket, 1 to 3 Miniatures, **Hockley Nymph**, C. E. Richter; Alla T. Mastick Cup—3 Blooms, **Charles L. Mastick**, Herman Runge; J. R. Beyerle Cup—3 Blooms, **Sellwood Glory**, Henry White; Kershishnik Award—3 Varieties—15 Miniatures, C. E. Richter; Anderson Award—Best Basket, 30 Poms, Ruth Westerberg.

American Dahlia Society's Medal—Largest Dahlia in Show, **Croyden's Masterpiece**, B. S. Chambers; E. H. White Trophy—Best 3 Fimbriated Cactus, A & B Size, Ruth Oswald; Portland Dahlia Society Medal—5 Blooms, A or B Size, **Soleil Calvados**, C. E. Richter; Portland Dahlia Society Medal—3 Blooms, A or B, **Golden Heart**, Bob Bloomfield; W. C. Scrutton Memorial Award—Best 3 Blooms 3 Varieties Foreign Dahlias, B Size, Bob Bloomfield; Veneer Trophy—Best Basket or Container B Cactus, **Danseuse**, Virginia Trantow; Best "A" Dahlia, **Pirate Treasure**, J. R. Beyerle; Francis C. Little Cup—Best "B" Size, **Gold Coin**, Doris Johnson.—Mrs. S. R. McEvoy, Sec'y, 14 S.E. 71st Ave., Portland 15.

Greater Phila. Dahlia Society

Again we were fortunate in having the use of WCAU Radio and Television Center to stage our 1959 Show on Sept. 19th and 20th. The showing conditions are ideal for a large dahlia show.

Even the old-timers do not recall such poor growing conditions as experienced this year. First: a very hot summer with records set for the number of 90 degree days. Almost every week a violent thunderstorm with a rainfall of several inches within an hour or so plus very strong winds. Then two days before show time it got so cool that several of our growers' gardens were frozen-out. Not a single dahlia bloom from several big exhibitors.

Considering the backward growing season it was amazing the number of good dahlias in competition. The show was better than anticipated and even praise from the Judges.

Our Seedling section always attracts much attention and the winner of the American Home Achievement Medal and A. D. S. Seedling Sweepstakes Award was **Pennsylvania**, by Stanley Johnson. It is a red informal decora-

tive, size 9½" x 5". The foliage and stems are of dark bronze color.

The Table of Champions contained: Best A, **Five Star General**, Keck Stephen Gardens; Best B, **Nita**, George M. Boyles; Best 3 B's, **Juanita**, Frank L. Deichler, Jr.; Best 5 Miniatures, **Chas-may**, Howard Rolph; Best 5 Pompons, **Joyce Gibbs**, George M. Boyles; Best Basket, Miniatures, **Hazel Harper**, Glenn L. Stitzinger; Best 3 BB, **Gordon Weiss**, Stanley Johnson.

Best of the A size, **Thelma Davidson**, **Kelvin Floodlight**, **Orange Majesty**, **Surprise**, **Ned Seymour**, **Betty Woodruff**, **Whitehall**, **Mary Elizabeth**, **Pride of Parkersburg**, **Go American**, **Autumn Blaze**, and **Art Linkletter**.

Best of the B size, **Heart of Gold**, **Heimatland**, **Kismet**, **Duet**, **Goody**, **First Lady**, **Maureen Connelly**, **Purity** and **Kandy Kid**.

Best of the Miniatures, **White Fawn**, **Bobo**, **Little Lemon Drop**, **Silver Springs**, **Catherine** and **Jinny Johnston**.

Best of the Pompons, **Margaret Williams**, **Teena**, **Gold Dust**, **Betty Ann**, **Diana Gregory**, and **Ila**.

Sweepstake Trophies were won by Mr. Frank L. Deichler, Jr., John E. Drach, Sr., George M. Boyles, Mrs. Edward H. Adam and Mrs. Adele Schonberger.—Charles G. Friedel, A. D. S. Representative, 317 Fanshawe St., Phila. 11, Pa.

National Capitol Dahlia Society

The 24th Annual Dahlia Show of the National Capital Dahlia Society, combined with the fifth Annual Mid-Atlantic Conference of Dahlia Societies was held on September 26 and 27 at U. S. Botanic Gardens at the Foot of Capitol Hill.

Dr. A. Tuinman, Attache for Agriculture, Netherlands, opened the show in fine fashion. He was accompanied by his wife. It was closed in grand style by the Honorable Antonio Carrillo-Flores, Ambassador of Mexico to the United States, accompanied by his wife. Both ladies wore dahlia corsages, compliments of Mr. David Quick, of Baltimore, Maryland.

The Ambassador presented the Queen of the Show trophy—Trofeo Eva de Lopez Mateos—to Mr. Harry Frank of Far Hills, N. J., for his entry **Danny**, a beautiful large-size persian

(Continued on following page)

Nationwide Dahlia News (Cont'd)

rose cactus dahlia. Originated by Frank Marker, N. J. The trophy, sterling silver dahlia mounted on a mahogany block, was the gift of the wife of Mexico's President Lopez Mateos.

A special exhibit of 180 blooms flown here by jetplane from Holland by Callego & Sons added to the international flavor. A visiting dahlia judge E. Henry White from Portland, Oregon, flying home at the conclusion of the show took some of the dahlias with him. Those blooms certainly had quite a ride.

It was a grand show, but the unusually hot, dry, weather here was reflected in fewer blooms than usual and by most of the trophies going to out-of-town exhibitors.

For the fifth time, Mr. Harry Frank also had the Largest Bloom in the Show, an enormous **Boram's Wonder**.

The American Home Achievement Medal was won by A. W. Smith, of Richmond, Virginia, with a white, formal decorative miniature seedling named **Peanuts**.

Best Winners: Best Large, **Surprise**, John A. Sherwood; Best Medium, **Iva Jean**, John A. Sherwood; Best Florist size, (BB) Seedling 57b5, E. R. Phillips; Best Miniature, **Beatrice**, Best Pompon, **Lady Lookout**, Best Small type, **Dottie D.**, all by A. G. Chamberlayne; Largest Bloom in Show, **Boram's Wonder**, and Queen of the Show, **Danny**, Harry Frank.

Section Winners: 50A, **Surprise**, A. Chamberlayne; 125A, **Kidd's Climax**, Benton Stong; OA, **Surprise**, John Sherwood; 3A, **Danny**, Harry Frank; 50B, **Butch**, J. B. Eddins; 125B, **Iva Jean**, John Sherwood; OB, **Clariam** **Luray**, Harry Frank; 3B, **Stoplight**, Mark Alger; bb, seedling, E. R. Phillips; 3bb, **Gypsy Girl**, Mrs. Fred Bremer; m, **Beatrice**, A. G. Chamberlayne; 3m, **Silver Spring**, A. G. Chamberlayne; SF, **Woody Woodpecker**, Ben Stong; 3SF, **Dark Lustre**, Mark Alger; 3P, **Alderman** **Purdue**, William Row, Sr. Artistic Design Classes, Best in Section, **Edge of the Waters**, Mrs. George E. Lee; Special Award, **The Garden of Eden**, Mrs. Harry Harris.

President and Senora Lopez Mateos arrived in Washington on October 9 for a State visit with President and Mrs. Eisenhower. Shortly after her

arrival the Senora was delighted with our gift of red and white dahlias, freshly picked in our gardens and placed in arrangement by Mr. Walter Sharron of the Nosegay Flower Shop.—Carl R. Greimel, 6369 Ridge Drive, Washington 16.

The Dahlia Society of Ohio

The Twenty-ninth Annual Show of the Dahlia Society of Ohio is now history. It was held Sept. 14 and 15 at Higbee's Auditorium in Cleveland.

Individual Sweepstakes winners are: Open, Jerry Kovar, Phalanx Station, O.; Large Amateur, Glen Ruth, Amherst, O.; Small Amateur, Frank Hemmeter, Cleveland; and Novice, John Brandt, Cleveland.

Jerry Kovar's entry of **Mrs. Hester Pape** won the award of Largest Bloom in the Show, Best Bloom of the Show and Best "A" Bloom in the Show. Other Court of Honor winners are: Rosemary Dahlia Gardens, Martins Ferry, O., Best 3 "A" Blooms, **Croydon's Masterpiece**; Best 3 "B" Blooms, **Miss McComb**; Best "B" Specimen, **Miss McComb**; Jerry Kovar, Best Ball entry, **Butterball**; Nick Kozopas, Best Miniature, **Gypsy's Kiss**; Best Pom entry, **Willo's Violet** by Eugene Woznicki, Bedford, O.

Special Award Ribbons given to the following "A" Dahlias: **Kelvin Floodlight**, **Surprise**, **Kidd's Climax**, **Autumn Blaze**, **Jane Lausche**, **Selene** and **Whitehall**. "B" Dahlias receiving Special Award Ribbons are: **Variety Girl**, **Paul's White**, **Golden Treasure**, **Michigan White**, **Juanita**, **Lady Ismay**, **Windlassie**, **Jules D'Hondt**, **Haselerova**, **Stoplight** and **Southern Beauty**; Miniatures, **Bo Bo**, **Carolina**, **Ruby Charm**; Pom, **Rosegay**; Single, **Bishop of Llandaff**.

In the Arrangement Division, Mrs. Ed Papish, Chairman, the Sweepstakes winner was Mrs. Mildred Reschke of Mayfield Heights.

Commercial exhibitors displaying the latest floral and basket arrangements of dahlias were Rocky River Dahlia Gardens and Wagon Wheel Dahlia Gardens.

Taking advantage of the Mid-West Show that was held in Pittsburgh a few days earlier, Mr. Kovar, Chairman of the Judges was able to unite the

finest group of experts that could be assembled at one time. A total of sixty judges accepted the invitation. They did a wonderful job for which the Dahlia Society of Ohio extends their appreciation.—A. D. S. Cor., Nick Kozopas, 131 Eldred Ave., Bedford, Ohio.

Central Valley Dahlia Society

The Eighth Annual Show of the Central Valley Dahlia Society was held September 26th and 27th at the Cunningham Memorial Art Gallery in Bakersfield, California. In spite of a very poor growing season for dahlias, an extremely dry and prolonged hot summer, the show was a good one with many beautiful dahlias and with exhibitors from as far north as Santa Cruz and south to San Diego.

Sweepstakes were won by Nat C. Lundgren of Santa Cruz who also had the best B dahlia and best flower of the show, **Golden Heart**. The Pete Sargent Memorial Perpetual Trophy was won by Mrs. Esther Homer of Porterville. Novice sweepstakes were won by Mrs. Vernon Cage of Bakersfield. In the Amateur class of under 100 plants Mr. and Mrs. R. L. Pyle of Long Beach were tops and for over 100 plants K. R. Clifford of Strathmore won.

Arrangements were of special note as the theme this year was California and unusual arrangements such as "Kern County—Black Gold," "Yosemite," "San Francisco—China town," and "California Missions" were on display. Mrs. E. H. Pogue of Bakersfield was awarded sweepstakes, and Edith Jacobsen of Tulare had the best arrangement.

Judging was done on Saturday morning and luncheon for officials and the prominent judges from various cities in California was served in the art Gallery patio at noon. At the close of the judging, the gallery was opened to the public and an extremely high number of visitors were registered before closing time on Sunday evening.—Alice M. Hargreaves, secy.

Dahlia Society of Wisconsin

The twenty-ninth Annual Dahlia Show, was presented September 5th and 6th, in Milwaukee at the Mitchell Park Pavillion. Although blooms were not as plentiful as in past years, due to

unfavorable weather conditions, it proved to be a successful show. Local exhibitors and those from neighboring States entered beautiful blooms, which made competition and judging keen and interesting. Trophies and awards which were presented at our Annual Banquet, October 25, 1959.

Show Winners 1959: Largest bloom in show, **Mary Black**, won by Stephen Jaloviar. The most perfect A bloom in the show, **Whitehall** by Ben Makowski. Most perfect B bloom, **Golden Heart**, by Glen Pierce. Most outstanding bloom of 1959 introduction, **Nota**, was won by Paul Hale. Most outstanding bloom of 1959 introduction, **Nita**, Dr. Wm. VanHorn. Big Ten, Ben Makowski; Little Ten, Dr. Wm VanHorn; Big Six, Dr. Wm VanHorn; Little Six, Glen Pierce; Big Four, Ben Makowski; Little Four, George Merkel.

Open to all, Sweepstakes, Dr. Wm. VanHorn; Large Amateur, Sweepstakes, Ervin Makowski; Small Amateur Division, Sweepstakes, Stephen Jalovia; Novice Division, Sweepstakes, Arthur C. Pochert.

(Continued on following page)

PRIZE WINNING DAHLIAS

That Will Win for You, Too.

1960 Introductions

FABULOUS—A—St.C. to I.C.—The outer petals are French rose, center petals Dresden yellow. American Home Achievement Medal and A.D.S. Seedling Sweepstakes winner.

ROOTS \$15.00 NET

MARIA LUPE—Parker-Robens—B dahlia but can be grown larger.—I.D.—Autumn.

ROOTS \$10.00 NET

ROBENS WHITE DOVE—B—I.D.—White.

ROOTS \$10.00 NET

LAVENDER PRINCE—B—F.D.—Lavender.

ROOTS \$10.00 NET

THE BLUSH—Miniature F.D.—A very light shade of yellow with a blush of Camelia rose.

ROOTS \$5.00 NET

See Roy Webb's Eastern Review, and A. D. Seedling Sweepstakes.

Price list ready about January 1, 1960

H. H. ROBENS

900 E. Washington St. Chagrin Falls, O.

Nationwide Dahlia News (Cont'd)

Seedlings—A. D. S. Seedling Sweepstakes Award, **Kimberly Jewel** and American Home Achievement Medal, Glen Pierce.

Small Flowering Division, Sweepstakes, E. J. Heggstad; Artistic Arrangements, Sweepstakes, Section J., Mrs. Edmund Slak, Sweepstakes, Section I., Mrs. F. Hebar, Men's Artistic Arrangements, Sweepstakes, Arthur C. Pochert.—Edmund F. Slak, Secy., 3052 So. 9th St., Milwaukee 15.

Midwest Dahlia Conference

The 26th Annual Midwest Dahlia Conference meeting was held at the Penn-Sheraton Hotel in Pittsburgh, Pa. on September 12th, 1959 at 5:00 P.M. with President Wm. Koenig presiding. The meeting was called to order and the Roll Call of Delegates was the first order of Business.

ROLL CALL: American Dahlia Society: Mr. and Mrs. Harry Dreyer, Mrs. Sarah Wood, Lynn B. Dudley, Dewey H. Mohr, Henry Olsen, Charles Diffenferffer, A. J. Mulcahy, Roy Webb, C. H. Stoeckel, Dr. Bruce B. Preas, Dr. Frederick Knoke, Walter Hardisty and Harry Frank. Central States Dahlia Society: Bernard Wright, Harold Cummings, Paul Hale and John Schramel. Badger States Dahlia Society: Erwin Makowski. Dahlia Society of Kentucky: W. F. Kleinjohn. Dahlia Society of Ohio: Charles Lasch, Jerry Kovar, E. J. Wind. Dahlia Society of Toledo: Carl Rampendahl. Dahlia Society of Wisconsin: Dr. Wm. VanHorn, Edward Wisniewski. East Liverpool Dahlia Society: John Eccleston, Wm. C. Craine. Greater St. Louis Dahlia Society: L. Mauthe, Chas. Weidemann. Greater Pittsburgh Dahlia Society: Raymond C. Baker. Indianapolis Dahlia Society: N. R. Hemphill, Richard Dunwoody. Michigan Dahlia Association: Mr. Ralph Bowman, Mrs. Ralph Bowman. Mid-American Dahlia Society: Dr. E. C. Drace. Minnesota Dahlia Society: no delegate. Ohio Valley Dahlia Association: Wilbur Anderson, Harold Vicroy. Tri-City Dahlia Society: no delegate. Greater Kansas City Dahlia Society: no delegate.

Minutes of the 1958 Midwest Dahlia Conference meeting held in Minneapolis, Minnesota were read and approved.

The Treasurer's report was accepted as read, showing a balance of \$172.09 as of September 12, 1959. A motion was made by W. F. Kleinjohn of the Dahlia Society of Kentucky and seconded by H. Dewey Mohr of the American Dahlia Society that the \$25.00 be paid to the Host Society for the Midwest Dahlia Trophy. Motion carried. A motion was made by Wilbur Anderson of the Ohio Valley Dahlia Association and seconded by Dr. Bruce Preas of the American Dahlia Society, that the Secretary be allowed \$80.00 for her expenses to the Conference meeting. Motion carried.

Correspondence: Greetings were read from Mrs. Hester Pape of California and a letter was read by the Secretary from the Badger State Dahlia Society withdrawing their invitation to be Hosts to the Midwest Dahlia Conference and Midwest Show for 1960. Bid for 1960 Midwest Show and Conference meeting. W. F. Kleinjohn stated that the invitation of the Dahlia Society of Kentucky for 1960 still held good. A motion was made by Mr. E. J. Wind of the Dahlia Society of Ohio and seconded by Chas. Lasch of the Dahlia Society of Ohio that the invitation of the Dahlia Society of Kentucky be accepted. Motion carried.

Show dates are September 17-18, 1960, at the Kentucky Hotel, Louisville, Kentucky.

Election of Officers:

President: A motion was made by Wilbur Anderson and seconded by W. F. Kleinjohn that the Presiding Officer of the Host Society be the President of the Midwest Dahlia Conference for the year 1960. Motion carried. **Secretary-Treasurer:** A motion was made by Dr. Bruce Preas and seconded by Mr. Walter Hardisty of the American Dahlia Society that Mrs. Louise Kleinjohn be re-elected Secretary-Treasurer of the Midwest Dahlia Conference for the year 1960. Motion carried.

Mr. Koenig brought before the Conference that we do something to commemorate the memory of J. Louis Roberts and after many remarks and discussion—a Motion was made by Chas. Lasch and seconded by Lynn B. Dudley of the American Dahlia Society that we start a fund (known as the J. Louis Roberts Fund) in memory of him for the improvement of Dahlias sponsored by the A. D. S. Discussion was held

on the above motion and a substitute motion was made by W. F. Kleinjohn that a Committee be appointed to investigate the cost of a Die for a Medal and all costs involved and report back to this Body, the money to come from donations from Participating Members and Societies and the Medal to be offered only at Midwest Dahlia Shows. Mr. Lasch and Mr. Dudley withdrew their original motion and Mr. Lasch seconded the substitute motion which carried.

The following were appointed to serve on the Committee: Chas. Lasch, Chairman; W. F. Kleinjohn and Harold Cummings.

A discussion was held in regards to Societies offering invitations for a future Midwest Show and then withdrawing their invitation a short time before the Show and that if some sort of a penalty was involved, the Societies would be more considerate. A motion was made by Jerry Kovar of the Dahlia Society of Ohio and seconded by Dr. Wm. Van Horn of the Dahlia Society of Wisconsin that a deposit of \$25.00 accompany an invitation for the Midwest Show and if the Society offering the invitation is carried thru, the deposit of \$25.00 will be refunded to them, but if the invitation is withdrawn, the deposit of \$25.00 is forfeited and remains in the Midwest Dahlia Conference treasury. Motion carried.

A motion was made by Mr. Kelnjohn and seconded by Ralph Bowman of the Michigan Dahlia Association that a vote of thanks be given the Host Society for a wonderful time and also for staging a very fine Show. Motion carried. The meeting was then turned over to the President of the Dahlia Society of Kentucky, Mr. J. B. Floyd, who made a few brief remarks and invited all to attend the Midwest Show in Louisville at the Kentucky Hotel in 1960.—Mrs. Louise Kleinjohn, secy, Midwest Dahlia Conference, 726 Barret Ave., Louisville 4.

Dahlia Society of Georgia

The Dahlia Society of Georgia celebrated its 25th Silver Anniversary Show at Southeastern Fair October 3-4th. We were host to Southern States Dahlia Association, members: Dahlia Society of Georgia; Dahlia Society of

Alabama; Dahlia Society of Tennessee.

Many fine blooms were on display, and ample space provided for each entry, over 1200 entries entered. An outstanding exhibit, a giant center piece containing hundreds of dahlias in a rainbow of color around the world to greet the visitors. Tucked in top a huge mound was a miniature globe. (See illustration, courtesy Atlanta Journal)

Another outstanding attraction, the Floral floating calendar by member of the Florist Association of Atlanta. There was at least one miniature float for each month of the year. Flowers blended with such symbols as Santa Claus for December, Cupids-Hearts for February; rockets and giant firecrackers for July, Pumpkins, black cats Dahlia combination for scary October; a Horn of Plenty for November. In keeping with our theme, Silver Anniversary, all prizes were silver.

List of Winners:

Art Linkletter, Best A Dahlia; Wind Lassie, Best B; Little Jimmie, Best Miniature; Miss Marjorie, Best Pom; Dotty D, Best Ball; Art Linkletter, Largest in show; Five Star General, Best A Formal; Mrs. Hester Pape, Best A Informal; Art Linkletter, Best S. C.; Rose Ann S., Best A Cactus; Piedmont Jewel, Best Southern Introduction; Mrs. M. Cartney, Best B Formal; Wind Lassie, Best B Informal; Golden Heart, Best B Semi Cactus; Small Frey, Best Miniature; Honey, Best Pom.

Attendance at the Dahlia Show was very large, conservative estimate of 25,000 people viewed the Silver Anniversary Show.—Conrad E. Faust.

(Continued on following page)

DAHLIAS of SPECIAL Merit

Will have cuttings and plants of the following in 1960.

Betty Woodruff, Croydon Ensign, Dark Elegance, Thelma Davidson, Helen West, Gleamlight, Knight's White, New Titan.

Also many other Australians.

List ready in January. Prices Right.

HANNA DAHLIA GARDENS

812 S. Delsea Drive

Clayton, N. J.

Pacific Northwest Dahlia Conference Show

The Seattle Dahlia Society was host to the Fifth Annual Pacific Northwest Dahlia Conference Show, August 29th and 30th at the Green Lake Fieldhouse in Seattle. Greater Seattle Inc., and the Park Department were co-sponsors.

Record size crowds attend the show both days. Guests were present from practically every state in the Union, and we were very pleased to have guests from our two newest states, Alaska and Hawaii.

This was without a doubt, the largest Conference Show held to date. There were 4 Exhibitors who represented the Societies from Everett, Tacoma, Bremerton, Coos Bay, Ore., Portland, Ore., and Seattle. Six commercial growers had their very attractive displays built up against the walls around the hall, adding much beauty to the show with their fine array of choice blooms. In the Seedling Division (1st & 2nd Year) there were 70 entries.

At the close of the show on Sunday evening, the Seattle Seafair Queen, Miss Diane Gray, presented the trophies and awards. She was assisted by Richard Martin of the Southtown Dahlia Society of Chicago. George McCrea, President, was master of ceremonies. This was a most fitting way to climax such a grand show. Mr. H. C. Newbom, Show Chairman, and all his committees are to be commended on the outstanding job they did.

Among the winners were: Novice Division Sweepstakes—The Brookside Dahlia Gardens Trophy, Mrs. Mabelle Johnson, Edmonds, Wash. Amateur Division Sweepstakes—The H. B. Weber Trophy, Mrs. Leo Fanning, Tacoma.

were: Smallest Fully Double Dahlia, —The R. D. Evans Award, Mrs. Bess Owens, Seattle—**"Gold Dust"**; Largest & Most Nearly Perfect Dahlia, President's Trophy; Jack Macdonald, Port Orchard, Wash.—**"Croydon's Masterpiece"**; Best "A" Dahlia in Show—Kitsap Co. Dahlia Society Trophy, Mrs. Josephine Reeve, Edmonds, Wash.—**"Janet Beckett"**; Best "B" Dahlia, Snohomish Co. Dahlia Society Trophy, Andrew Babb, Bremerton,

Wash.—**"Golden Heart"**; Best "BB" Dahlia, The McCrea Trophy, Mrs. June Collins, Seattle—**"Hoek's Yellow"**; Best Seedling, Andy DeRooy Memorial Trophy, Mrs. Florence Raymond, Alderwood Manor, Wash.—**"BB"** StC. Red No. 1831, The American Home Achievement Medal and the ADS Seedling Sweepstakes Award went to Tony DeRooy, Monroe, Wash. for **"Cascade Kay"** (3 yr. Seedling, B IC, Lt. Bl. Pink with yellow—Score 85). Best Basket Mixed Dahlias—Seafair Trophy—Greater Seattle Inc., Mrs. Bess Owens, Seattle, —Rivoli—Pierrott—**"Golden Heart"**. Best Basket "A" size, Empire Builders Trophy, Wm. J. Reeve, Edmonds, Wash.—**"Ami Louis Blin"**; Best Basket "B" size Cactus, Mortland Trophy, Miss Bess Owens, Seattle—**"Wagschall's Goldgrone"**; Best Basket "B" size, Southern Oregon Dahlia Society Trophy, Pablo Abellera, Seattle—**"First Lady"**; Best Basket "B" size, The Owens Trophy, Mrs. L. A. Blauman, Tacoma—**"Delicate Beauty"**; Best Basket Min. Cac. or Semi-Cac., E. Henry White Trophy, Mrs. Leo Fanning, Tacoma—**"Trinket"**; Best Basket Min. Dec., McClary Trophy, Mrs. Bess Owens, Seattle—**"Cinnamon Gem"**; Best Basket Pompons, Anderson Trophy, John Lindstrom, Everett—**"Takas Purple"**; Best Triple Entry, American Orig. "A". Portland Dahlia Society Medal, Mrs. Catherine Miller, Bremerton—**"Marilyn Dale"**; Best Triple Entry of American Orig. "B", American Dahlia Society Medal, Tony DeRooy, Monroe, Wash.—**"Cascade Glow"**; Best Triple Entry of European Orig., Bruidegom Award, Tom Richardson, Everett—**"Good Earth"**; Best Triple Entry of Wash. State Ori., Wash. State Dahlia Society Trophy, Tony DeRooy, Monroe, Wash.—**"Vagabond"**.

Arrangements Division Winners: Best Dining Table, Bookside Dahlia Gardens Award, Mrs. Leo Fanning, Tacoma—**"Bridget W"**; Best Coffee Table, C. O. Nickel Dahlia Gardens Award, Mrs. Laura Buddin, Kirkland, Wash.—**"Gerrie Hoek"**; Best Mantle or Buffet, Miller Dahlia Gardens Award, Wm. Hoffman, Edmonds, Wash.—**"Thor"**; Best Arrangement by a Man, Botting Dahlia Gardens Award,

Hal Reynolds, Tacoma.—(Mrs.) Helen McCrea, 6845-35th Ave. N.E.

The Rochester Dahlia Society

Frosts, deaths, disease and drought took their toll from the 20th annual Rochester Dahlia Show which was held Sept. 19 and 20, 1959 in the Rochester Museum of Arts and Sciences. But the 536 entries, less than half as many as on good years, lent a dramatic splash of color to the Museum's exhibition area.

The grower of the "best in show" flower, George Brunjes, of Elmira, had to pick his more than 100 entries on Wednesday and keep them, cut, because of frost prediction. Despite the early cutting, Brunjes' blooms swept nine major prizes. The "best in show" bloom was a **Charles Ondrick**. Brunjes also won prizes for the largest bloom with a **Mary Elizabeth**; the big four and the little four, for the most outstanding bloom in the "open to all" section, and for the section sweepstakes and five division sweepstakes in the "open to all" section.

Mr. Peter Collis, a retired candy store owner, who has been raising dahlias for only five years, captured all but one award in the amateur class. Also, his **Kidd's Climax** won the most outstanding bloom award in the amateur class. He also won the section sweepstakes.

Other winners were: Section O Specials: Smallest, most perfect pom, **Mrs. Telfer**, Mr. Phillip Kimmell; Merrill Brown Memorial, **Kirsten Flagstad**, Mr. John Franz. Section 1, Novice: Most outstanding bloom, **Yellow Elegance**, Mrs. Gerry Brodzinski; section sweepstakes, Mr. William Sedor. Seedlings: No awards were given for the most worthy undisseeded seedling three years old, nor the American Dahlia Society seedling sweepstakes.

Blue ribbon dahlia arrangements were created by Mrs. Glen Offensend in the class titled, "Amber Waves"; Mrs. Robert Brightman, "Spacious Skies"; Webster Country Gardens, "Purple Mountain Majesties"; Mrs. Stanley Parker, "Alabaster Cities Gleam"; and Mrs. David Rosenthal, "Our 50th State."

A report on the Rochester Show would not be complete without telling about the "Founders and Awards" banquet which took place Saturday evening after the show. This was our 20th anniversary and four of the original members were present, Mr. and Mrs. Arthur Battams and Mr. and Mrs. Orville Henderson. They read minutes of first meet-

ings and told of first meeting places, which ranged from Herb Jones' Garage, the Police Recreation Room, to the Y.M.C.A. Although they were many times low in funds, their spirit never dampened, they carried on with the same objective we adhere to today. Mr. Ronald Scott presented the awards. Our President, Mr. Barton Brooks (called for a moment of silence in respect for our departed members.

There were many out of town guests at the show and banquet. We will hope for a better year in 1960 for dahlias.—Phillip M. Kimmell, 144 Clover St., Rochester 10, N. Y., Show Chairman and Harold Bircher, Co-Chairman, 37 Ontario View St., Rochester 17, N. Y.

Southeastern Mich. Dahlia Society

Our 7th Annual Dahlia Show held at the O'Shea Memorial Center in Detroit Sept. 12 and 13, gave ample proof that the Dahlia is indeed a rugged flower. Despite the extreme heat to which they were exposed practically all summer, when show time came, we had many more beautiful blooms than expected.

Award winners as follows: A. D. S. Seedling Sweepstakes Award and Home Achievement Medal won by Stanley Johnson for his "Dr. V. V. Phelps"—"A" Size, Light Red, grown by Ray Olson.

Individual sweepstakes winners were: Novice, John Lenard, Alex Toth Trophy. Small Am., John Allen, Dave Millar Trophy. Large Am., Ry Olson, A. Platz Mem. Trophy. Open Div., B. H. Bottom, Roy Koch Trophy. Grand Sweepstakes, Ray Olson, Demery Trophy.

Most Outstanding, in Show: **Stoplight** Mrs. E. Parker, A. D. S. Bronze Medal. Largest Bloom, **Mary Elizabeth**, Gustav Schmitz. Most perfect "A," **Patricia Spollen**, R. F. Row. Most outstanding three bloom entry **Peach Blend**, Alex Toth. Arr. Div., Most Out., R. S. Williston Trophy, Mrs. Bert Grim. Sweepstakes Mrs. A. H. Bottom Trophy—Mrs. Bert Grim. Artistic Display, Bottom's Dahlia Gardens, Oren T. Voyles Trophy. Kosmela Trophy, Dave Millar. Walter Sprague Trophy, Ray Olson.—Mrs. David Millar, Rec. Secy., 15848 Pinehurst Ave., Detroit 38.

(Continued on following page)



DAHLIAS AROUND THE WORLD

A mass display of colorful dahlias at Atlanta, Ga., show. Won Special. Photo courtesy Conrad Foust and Atlanta Journal-Constitution.

Snohomish Co. Dahlia Society

Over 1500 viewed the 50th Anniversary Show of the Snohomish County Dahlia Society which was a huge success. Visitors were from Alaska, England, Germany and many eastern states as well as the local area.

The hundreds of entries made not only from our Society but from the Seattle Dahlia Society, Washington State Dahlia Society in Tacoma and Kitsap County Dahlia Society in Bremerton, made a mass of color, which looked like a rainbow garden.

Mrs. F. P. Sawyer, first President of the organization was on hand to help with the presentation of Trophies. Top winners in the Show were:

American Dahlia Society Seedling Sweepstakes Award, Pablo Abellera, with **Seafair Princess**; American Home Achievement Medal, Pablo Abellera, with **Seafair Princess**; Best First Year Seedling, Society Trophy, Pablo Abellera, with **First Year #365**; Smallest Dahlia, Abellera Trophy, Tom Wigley, with **Tom Thumb**; Largest Dahlia, H. S. Records Memorial Trophy, Mrs. Jo

Reeve, with **Storm Cloud**; Best Dahlia, Society Trophy and A. D. S. Bronze Medal, W. J. Reeve, with **Ami Louis Blin**; Best B, Van Winkle Trophy, Pablo Abellera, with **First Year #365**; Best BB, Wm Caldwell Trophy, Ann Teul, with **Cheerio**; Best **Jane Cowl** Basket, Lee Grocery Trophy, Mrs. J. B. Mortland; Best Basket Mixed Dahlias, Everett Trust & Savings Trophy, Margorie Terwillinger; People's Choice, B. H. Weber Trophy, Tom Richardson, with **The Cardinal**; Best Arrangement, Allied Florist Trophy, J. E. Munroe; Best Basket Gladiolus, Purdy & Walter Trophy, Elliott Munroe.

Open Division

Best Dahlia, Rosette, W. J. Reeve, with **Ami Louis Blin**; Best Basket B, Dec., Tony Dire Trophy, Pablo Abellera, with **First Lady**; Best Basket BB, R. D. Evans Award, Clifford Taylor, with **Gayle Boone**; Sweepstakes, Society Trophy, W. L. Caldwell with 110 points; Best Basket A, Incurved Cactus, Hans Hagen Trophy, Clifford Taylor, with **Frau Mrg. Haase**; Best B, Basket Semi Cactus, Friedlander Trophy, Jo Reeve, with **Bell of the Ball**; Best Basket B, Incurved Cactus, Tom Sullivan Trophy, Bess Owens, **Brightest Pink**; Best A, Basket, Seattle Dahlia Society Trophy, Clifford Taylor, with **Frau M. Haase**; Best Basket Min. Dec., Meery Field Trophy, J. O. Lindstrom, with **Autumn Queen**.

Winners in Amateur Class were: Pearl Kiehn Trophy, Jo Reeve, with **Ami Louise Blin**; Sweepstakes, Chaffee Trophy, J. E. Munroe with 117 points; Largest and Most Perfect Society Trophy, Mrs. O. R. Charlton, with **Miss Echo**; Best A, Basket, McDonough Jewelers Trophy, Jo Reeve, with **Ami Louise Blin**; Best B, Basket, Laurel Drive Grocery Trophy, Tom Richardson; Best BB, Basket, Betty Sutherland Award, J. E. Munroe, **Cheery Sundae**.

Junior Division: Best Dahlia, Caven-der Award, Patty Owens; Sweepstakes, Evans Award, Pat Moran with 29 points.

President and Show Chairman Tony DeRooy thanks everyone that helped to make the show a success, with a special "Thank you" to the Park Board for the use of Floral Hall and the fine cooperation given the Society in setting up the show.—Mrs. Gertrude Charleton, Sec'y, 1830 Oaks Ave., Everett, Wash.

Long Island Dahlia Society

Here is the report of the Section winners in the 1959 Long Island Dahlia Show held at the Greenacres Shopping Center at Valley Stream.

Section IA: Classes 101 to 114, **FD, Uchuu**, Sam Impecchi; 201 to 214, **ID, Madonna**, Al Warren; 301 to 314, **SC, Surprise**, Al Warren; 401 to 514, **ST or IC, Bertha Shone**, Joseph Huck.

Section 3A: Classes 100 to 500, **FD, Uchuu**, Martin Guttler.

Section 1B: Classes 101 to 114, **FD, First Lady**, Dr. Joseph Sommers; 201 to 214, **ID, Windlassie**, James Lawless; 301 to 314, **SC, Piquant**, Dr. Joseph Sommers; 314 to 514, **Juanita**, Court Duerk.

Section 3B: Classes 101 to 114, **FD, Gerrie Hoek**, Monroe Classon; 201 to 214, **ID, Windlassie**, Mr. and Mrs. John Jagnow; 401 to 414, **SC, Florence Chadwick**, Henry Olsen; 501 to 514, **IC, Wagschall's Goldkrone**, Martin Guttler.

The Long Island Dahlia Society Medal was awarded for the most nearly perfect of the five Tricolor winners in classes 101 to 514 to Mr. Martin Guttler's—**Wagschall's Goldkrone**.

Section BB—Small Blooms: Classes 101 to 114, **SM, Hillcrest Canary Bird**, Dominick Lanzo. Section C—Miniatures: Classes 101 to 214, **M, Beatrice**, Henry Olsen; 301 to 514, **M, Geneva Crystal White**, Henry Olsen.

Section D—Pompons: Classes 601 to 613, **Margaret Williams**, Henry Olsen. Section E—Other Types: Classes 15 to 22, **Imp**, Marie Schnugg. Section F—Baskets: Class FA, 7 Blooms, **Vater Bergerhoff**, Martin Guttler; Class FB, **Juanita**, Court Duerk; Class FBB, **Cheerio**, Martin Guttler; Class FD, **Gold Dust** and **Little Edith**, Martin Guttler. Section G—Undisseminated Seedlings, one to two years old; Awards were won in this section by John Wagner, Monroe Classon, John Johnson, John Muller and Henry Olsen.

Section H—Special Classes: Class A, American Home Achievement Medal, **Tina Marie**, Originator, Al Warren and introduced by Dewey Mohr. Class B, A. D. S. Seedling Sweepstakes, Variety, **Miss Patricia Murphy**, Al Parrella and **Tina Marie**, Warren. Class C, Dahlias, L. I. Origin, **New Look**, Martin Guttler. Class D, Otto J. Aumuller Memorial Trophy. Best bloom, Foreign origin, Martin Guttler and for **Uchuu**, which was also the best and largest bloom in

the Show (14 inches). Class E, All American Trophy of American Origination was **Cecil M**, shown by Martin Guttler.

Arrangement Classes—Tricolor was won by Mrs. Casper Vanbree. Blue Ribbons were won by Mrs. Frances Digi, Mrs. Zegelic, Mrs. Margaret Holslag, Mrs. Casper Vanbree, Mrs. Edna Bungert, Mrs. Martin Guttler and Mrs. Inez McGill.

The Long Island Dahlia Society announces the date for its Annual Dahlia Show as September 10th and 11th, 1960 at the Plattsdeutscher Park Hall, Franklin Square, New York.—Mrs. Russell Holslag, Sec'y, 547 Parkside Blvd., Massapequa, N. Y.

Bergen Co. Dahlia Society

The Twelfth Annual Show of the Bergen County Dahlia Society was held Sept. 19th and 20th, at the West Exhibition Hall, Bergen Mall, Paramus, N. J. This was a new venture for our Society, but it proved to be most satisfactory. We had several thousand visitors who came to view the show. Our exhibitors were very pleased as there were no steps to climb. Despite very unfavorable growing conditions, the quantity and **QUALITY** of our blooms were excellent. The Hon. Senator Walter Jones presented the Trophies at 5 P.M. on Sunday to the following.

Sweepstakes, Amateur, Wm. Neckerman, Norwood, N. J.; Sweepstakes, Open to All, Gamston Gardens, Riverdale, N. J.; Sweepstakes, Novice, Raymond Bedford, Stony Point, N. Y.; Sweepstakes, BB, Mr. and Mrs. Harry Dreyer, Ridgewood, N. J.; Sweepstakes in Baskets and Vases, Mrs. Fred Bremmer, Nanuet, N. Y.; Best Exhibit in Show, Basket of **Sister Kenny**, Mrs. Fred Bremmer; Best A in Show, **Earl Wood**, Harry Frank, Far Hills, which won A. D. S. Gold Medal; Largest and Most Nearly Perfect A, Gamston Gardens, with **Sequoia**; Sweepstakes in Arrangement Class O, Mrs. Westley Hunter of Oradell, N. J.; Sweepstakes in Arrangement, Mrs. Pat McDonald of Closter, N. J.; All American, won by Mr. and Mrs. Harry Dreyer, with **Fiesta**; Sweepstakes, Miniatures and Poms, Wm. Neckerman, Norwood, N. J.

Special Class F, George Snow, Sr. of Rivervale, N. J., with **Mary Elizabeth**;

(Continued on following page)

Nationwide Dahlia News (Cont'd)

Special Class A, Gamston Gardens, with **Sequoia**; Special Class B, Harry Dreyer, with **Juanita**; Special Class C, Mr. and Mrs. Harry Dreyer, with 3 **Jules D'Hondt**; Special Class D, Wm. Doermann of Rutherford, with **Gold Dust**; Special Class E, Gamston Gardens, with **Maffie**, Special Class G, For Ladies Only, Mrs. Harry Dreyer, with **Beryl Jean**; Special Class H, For Men Only, Harry Dreyer, with **Pride of Parkersburg**; Special Class J, Mr. and Mrs. Harry Dreyer, with **Art Linkletter**; Best A in Novice Class, George Snow, Sr., with **Kirsten Flagstaff**.

George Stoeckel of Paterson, N. J., with **Kathryn Beran**, a min. St. Cac. purple, received the Home Achievement Medal. The 3 Best BB in Show, Gamston Gardens, with **Lawrence Welk**; Award in Invitation Class, Mrs. F. Leers, of the Teaneck Garden Club; Best A in Amateur, Mrs. Fred Bremmer, with **Five Star General**. Other Dahlias that won Tri-Colors were **Mari-posa**, **Goody**, **Molly Lou**, **Lady Bonython**, **Ginga**, **Imperial**, **Terrific**, **Ned Seymour**, **Duet**, **First Lady**, **Stoplight**, **Iva Jean**, **Fireworks**. Best Exhibit in Amateur Classes—A. Fuschetti of Summit, N. J., with 3 **Mary Elizabeths**.

Our Show Chairman Joseph Gambi and Co-Chairman Wm. Neckerman wish to express their sincere thanks to all who helped make this Show such a tremendous success. — Mrs. Harry Dreyer, Publicity

Michigan Dahlia Association

The 12th Annual Michigan Dahlia Association Show was held in the Civic Auditorium at Lansing, Michigan, August 29 and 30 with Mr. Victor L. Steckle of Lansing acting as chairman and President Ralph I. Bowman of Jackson, as co-chairman. Due to the early date and adverse weather conditions the supply of blooms was limited but as in years past, they were very well received.

In the Novice Division, Sweepstakes went to John Lenard of Flint and Joe Johnston of Rives Junction, Michigan. The Most Outstanding entry in this division was "**Patricia Spollen**", entered by John Lenard. The Most Outstanding "B" Bloom in the Small Amateur Division was "**Stoplight**" entered by

Harold Gallick of Lansing who also won the James A. Collinson Trophy for Sweepstakes in this division. The Best "A" Bloom was "**Leander**" entered by John Allen of Detroit, this entry also won Special Honors as the Best "A" Bloom in the Show.

Large Amateur Division, the Most Outstanding "A" Bloom was a Seedling "**Jay Bee**" entered by John Allen. "**Windlassie**" by C. J. Addington of Detroit was the Most Outstanding "B" Bloom in the division and incidentally the Best in the Show. In the Miniature or Pom Class "**Allegonda**" proved a winner for Harold Gallick. Large Amateur Sweepstakes Award, The Robe-anna Dahlia Farm Trophy and the American Dahlia Society Medal went to Raymond Olson of Plymouth.

Open Division, Mr. and Mrs. James Faggion of Lansing chalked up victories with "A" Bloom "**Brown Bomber**"; "B" Bloom "**Lyrieck**"; three "B" Bloom "**Stoplight**", this entry also proved to be Best three Bloom entry in the Show; Best three "BB" Bloom Class with a Sport of "**Gypsy Girl**" and three Bloom Pom entry **Nero**. The Faggions also won the Alfred H. Bottom Trophy for Sweepstakes in Open Division. Raymond Olson took the three Bloom Miniature entry with "**Orange Baby**". Any Other Type, three Bloom entry, "**Bishop of Landaff**" won a Special Award for Victor Steckle. The Smallest, Most Perfect Pom in the Show "**TinyTot**" was entered by the James Faggions. Largest Blue Ribbon Dahlia in the Show was "**Arthur Godfrey**" entered by John Allen.

Best Bloom of Michigan Origin Award, the Z. W. Kosmela Trophy, went to the James Faggions, for "**Michigan White**". Grand Sweepstakes won the Perpetual Trophy and Special Cup for Mr. Raymond Olson, In the Junior Achiever Class Susan Lenard won with "**Black Narcissus**" and Roger Bowman with "**Bobo**".—Ralph L. Etienne (Show Secretary), 527 Barrett St., Jackson.

Inglewood Dahlia Society

Inglewood (Calif) D. S. held its twenty-eighth exhibit on August 15-16 for the first time in the National Guard Armory, Inglewood. This Armory gave us considerably more space than we needed, but fifteen years ago when we

first went to our former location that, too, caused many to throw up their hands and moan, "We'll never fill it! But we're growing."

The Show proved several other things, also. First, splitting our novices into two classes and calling one Advanced Novices was immensely successful. The newcomers who get cold feet on the front steps had no chance to retreat. Besides, it creates much more interest when the new-to-exhibiting set know they don't have to compete against the old timers "until such time as they either win sweepstakes or feel they can "grow 'em and show 'em" along with the best.

Secondly, creating many new special classes (Best A, B, BB, etc.) for which no entry is necessary. Winners are chosen from blue ribbon winners in all amateur sections. We even had largest in show grown by a professional (**Giant Beauty**) and largest in show grown by an amateur (**Boram's Wonder**).

Nat Lundgren of Santa Cruz, had the most spectacular commercial display. The upper deck of his exhibit consisted of massive arrangements of his own originations—**Iva Jean**, **Bernie**, **Beauty Blush**. He also won the A. D. S. Seedling Sweepstakes with a B size, phlox purple semi-cactus called **Ruth Ella**.

Most outstanding A dahlia, amateur, was **Jane Lausche** by Ruth Bishop, San Diego; B size, **Schubert** grown by Thelma Johnson—an advanced novice if you please! BB size, **Pat N Dee**, grown by Herb Priess. Smallest pom was **Margaret Williams** grown by Bud Teter. **Bonnie Esperance** grown by Dr. Raitt of Santa Ana, was smallest bloom.

As is usual at our show, each exhibitor places all his blooms on one table and since there is a trophy for the most Artistic table, competition is keen and ideas are varied. Among the advanced Bud Teter won the cup. Herb Priess won in the amateur set. Thelma Johnson won the trophy in advanced novices. The sweepstakes trophy was won by Ray Rambo, of Redondo Beach.

Among the "blues" noted in the Court of Honor and elsewhere in the Show were **Myrtle Falvey**, **Florence Chadwick**, **Selene**, **King of the Whites**, **Pride of Parkersburg**, **First Lady**, **El Magnifico**, **Lady Bonithon**, **Ginny Johnson**, **Lavengro**, **Clarium Royalty**, **Windlassie**, **Orfeo**, **Golden Heart**, **Ade-laide**, **Lilas Superbo**, **Good Earth**, **Croy-**

den Robin, **Silver Wedding**, and **Arab Queen**.

In dahlia arrangements, cup winner for the most outstanding entry was a parrot made entirely from dahlias by Louise McKelvey. Sweepstakes winner in this division with more conventional exhibits, was Vicki Dibben of San Fernando Valley.

Local garden clubs put on their usual fine garden displays with the Hawthorne Garden Club as cup winner.—Fred McKelvey, Show Manager, 962 Franklin St., Santa Monica, Calif.

East Bay Dahlia Society

The first annual dahlia show was held by the East Bay Dahlia Society on August 22 and 23 at the Lakeside Park Garden Center in Oakland, Calif. Below are the first place winners in each category:

Novice—Mr. and Mrs. John Stowell, Sunnyvale, Calif. won in the following classes: Best General Display, Best Formal Decorative with **Kidd's Climax**, Best A—ID with **Silver Wedding**, Best A—SC with Janet Beckett. Paul Reno, Oakland: Most Artistic Display, Best Pom with **Alderman Pardieu**, Best B Cactus with **Juanita**, Best B Formal with **First Lady**, Best B—IC with **Rodeo**, Largest and most perfect dahlia in novice section—**Croydon Masterpiece**, Best dahlia in novice section with **Florence Chadwick**.

Mrs. John Dew of Vallejo, Calif. won the Silver Certificate from the National Dahlia Society, England, for the 3 best FD—**Starfire**, **Kidd's Climax** and **Showboat**, Best B—ID with **Pink Windlassie**, and Best A—Cactus with **Allways**, Rita Lightner of Monte Vista, best Ball Dahlia in this section with **Rosy Dawn**. R. L. Pyle of Long Beach, had the Best pom in the novice section winning with **Willo's Violet**.

Advanced Amateur—Mr. and Mrs. Troy Cloinger of Oakland, won the Mayor's Trophy for best dahlia in show with **Kidd's Climax**, the largest and most perfect dahlia in the show as well as in its class with **Giant Beauty**, and Best pom with **Pom of Poms**. Mr. and Mrs. R. C. Trotter of Oakland won Best Bi-color with **Frances H.**, and Best Container of B—FD with **Brandaris**. Mr. and Mrs. Carl Lundvall of San Le-

(Continued on following page)

Nationwide Dahlia News (Cont'd)

andro won Best 5 blooms, B—ID with **Windlassie**, and Best 5 blooms, A—Cactus with **Nagel's Solidite**.

Commercial—Woodrow Walkup, Berkeley, won the Best General Display. Nat C. Lundgren, Santa Cruz, won Highest points in section, and the American Home Achievement Medal with a seedling—**Ruth Ella**, and the Mrs. R. L. Pyle Trophy for the Best collection of miniatures.

Mr. and Mrs. R. E. Harter of Alamo won the Most Artistic Display, Best Bicolor, with **Mrs. Eric Halford**, and the Bert Pitt trophy with **Red Sails**. Mr. and Mrs. John Guggemos of Richmond won largest and most perfect dahlia, with **Boldface** and smallest Pom with **Py**. Henry Pope of Alameda had the best dahlia in the commercial section with **Heather McBride**.

These winnings are only partial winnings for each entrant in the show, therefore we mention winnings which seemed most noteworthy. We had a beautiful show with a wonderful setting in Lakeside Park—and outside in the Trial Garden and the Display Garden one could see the many growing dahlias in all their regal beauty.—Grace Harter, 2769 Danville Highway, Alamo, Calif.

Alabama Dahlia News

Alabama's 1959 Show was truly a good one. We had quality as well as quantity. The blooms were well grown and well exhibited. The Novice Section was the best and largest we have ever had. From what was seen there, some of our best growers will have to look out if they keep ahead. As I again check the records, I seem to see passing in review the most outstanding of them all.

For size there comes **Giant Beauty**, the Largest in the Show. Next for perfection—**Surprise** proudly wearing the crown of Most Perfect "A" Size Bloom. Coming up next is the captivating **Variety Girl** which won two titles—Best "B" Bloom, and Best Informal Decorative Bloom. Here come the triplets, The Best Three "A" Size—**Ginger** and close by the Three Best "B" Size—**Bunny**. That group of twelve good lookers are the Best Twelve in the Show. Making her appearance for the first time is **Rosemary J**, the Best 1959 there. Of those appearing in 1957-1958,

the best was **Nina Gerhardt** and was the representative. The foreigner at its best was **Bunny**. Do you ever have a bloom that is a day late in getting to be just right. We do and so we have a place just for it. **Mary Elizabeth** was filling it this year. Marching side by side in the the Best Informal Decorative "A" review were the Best "A" and "B" size, formals: **Kidd's Climax** and **Alabaster**, and "B" **Mrs. Hester Pape** and **Variety Girl**; **Surprise** and **Piquant** followed as the Best Semi Cactus; Most Perfect "A" and "B" Cactus, **Rose Ann S** and **Apogee** completed this particular group. The little ones always are admired, **Pat Oneal**, Best Miniature, **Willow's Violet** and Best Pompom **Rondkop**, were the Best Single Blooms in their groups. Triplets again—**Nellie Shee** the miniature and **Freshness**, the pompom, along with I guess we will them the quintuplets as there are five **Iva Jeans** The Best Five in the Show conclude our 1959 parade.

Our parade fades into a memory of beauty, I close the records, but as I place them on the shelf with the others I am startled at the number already there. One . . . two . . . three . . . My goodness this makes twenty-four. What do you know? 1960 will be our Silver Anniversary.—Maude Goodwin, Reporter, 2612 Ave. S. Fairview, Birmingham 8.

Baltimore Dahlia Society

The Baltimore Dahlia Society staged its 34th Annual Show Sept. 19th and 20th in the Eastpoint Auditorium, Baltimore, Md. As has been the pattern we again conducted one of the finest shows, same being well staged and Lou Gill and his committee did a swell job. The competition was very keen and the judging superb which makes for a successful show.

The Hardy Garden Section was copably handled by Mrs. Louis Gill who had as her judges Mrs. Wm. Bridges and Mrs. David Boyd.

The sweepstake winners in the various sections were as follows: Novice Section, Rudolph J. Cohn, also won the A. D. S. Silver Medal for the Best Bloom in the Section. Section A, for growers 75 plants A size, Richard Small and the B size, H. R. Caldaugh. Section B for growers up to 150 plants A size, F. J. D'Eustachio and the B size,

John Sherwood, Class C—Open to All, A size, Chas. M. Diffenderfer, and B size, Chas. M. Diffenderfer. Ball types, A. G. Chamberlayne; Pompons, Wm. Rau, Jr.; Miniatures, Formal and Informal, Wm. Rau, Jr., and Cactus and Semi Cactus, A. G. Chamberlayne. Hardy Garden Sweepstakes was awarded to Mrs. Louis Gill.

The winners in the Court of Honor—For best A size bloom, **Art Linkletter**; best B size bloom, **Windlassie**; best pompons, **Alderman Perdue**; best miniature, **Belle**; best basket of dahlias, **Ginga**. Some of the winners were as follows: **Perry Como**, **Betty Woodruff**, **Ned Seymour**, **Surprise**, **Flying Saucer**, **Uchuu**, **Mary Black**, **Kelvin Floodlight**, **Vera Seyfang**, **Wag**, **Goldkrone**, **Stoplight**, **Golden Heart**, **Juanita**. Miniatures: **Beatrice**, **Hazel Harper**, **Mrs. Watt**, **Ruby Charm**, **Tacita**. Pompons: **Little Beauty**, **Icicle**, **Lesley Marks**, **Clarisse**, **Gold Dust**, **Precious Gem**, **Ebony**, **Mrs. French**. There were some fine trophies, including silver pieces awarded—the Gov. Millard Tawes Award going to Chas. M. Diffenderfer for basket of 7 blooms. The Mayor Harold J. Grady award for basket of 7 blooms B size was awarded to President Paul Hunter.—H. O. Aburn, Secy, 6425 Blenheim Rd., Baltimore, Md.

Badger State Dahlia Society

The principal awards at the Fourteenth Annual Show of the Badger State Dahlia Society, Inc., held at the Community Center Building in the city of Madison on September 6th and 7th, were as follows:

Best Formal Decorative—**Kiid's Climax** by Barbara Garnett; Best Informal Decorative—**Mrs. Hester Pape** by Walter F. Schar; Best Semi-Cactus—**Golden Heart** by H. I. Peterson; Best Cactus—**Nita** by Judge George R. Currie; and Largest Bloom in Show—**Mary Elizabeth** (12 x 8¼ inches) by Everett R. Loder. Each of these five winners receives possession of a large traveling trophy for one year, and can gain permanent possession thereof by winning the same award three times.

Large pottery vases were awarded to the winners of the best six A size blooms and of the best six B size blooms, each of a different variety entered in a separate container. P. W.

MacKenzie, Jr., was adjudged winner of the best six A's with **Heavenly White**, **Mrs. Hester Pape**, **Ned Seymour**, **Prairie Fire**, **Surprise**, and **Whitehall**. The exhibitor having the best six B bloom entry was Summit Gardens, Glen Ellyn, Illinois, with: **Bunny**, **Fortune**, **Golden Heart**, **Kismet**, **Lady Ismay**, and **L. M. Hoops**.

Winners of sweepstakes were as follows: Non-Member Section — Mary Peterson; Small Amateur Section—H. I. Peterson; Large Amateur Section—Otto Sell; Open-to-All Section—Everett R. Loder; Small Flowering Section—Judge Currie.

The American Home Achievement medal was awarded to **Kimberly Jewel** originated by Norman Sutherland of Kimberly, South Africa, and exhibited by Summit Gardens. It is a strikingly beautiful dark blend B size cactus, 7 x 4 inches in size, the color being red blended with white, and the stems are strong and straight. **Kimberly Jewel** also received the A. D. S. Seedling Sweepstakes Award of Merit with an average of 85.2.

There were more entries in the Non-Member Section than in any of our previous shows. This is encouraging because we recruit our new members largely from those who have exhibited in this section.—Earl B. Frusher, Publicity Chairman.

East Liverpool Dahlia Society

The East Liverpool Dahlia and Floral Society of East Liverpool, Ohio held it's 34th annual Dahlia and Flower show, Saturday and Sunday September 19-20 1959, in the Westgate School.

Considering the hot season and no rain the previous six weeks or more we had a very nice show. The largest "A" Dahlia, **Ned Seymour**, was won by Mrs. L. S. Davies. The largest and most perfect "A" **Clarian Royalty** was won by Jerry Kovar of Cleveland, Ohio. The most perfect "B" bloom, **Kandy Kid**, was also won by Jerry Kovar. The best ball Dahlia, **Butterball**, was won by J. T. Eccleston. Three in a vase was won by Rosemary Dahlia Gardens.

American Home Achievement was won by Rudy Motznik of Pittsburgh. A "B" formal and named **Doris O. A** "B" Dahlia F. B.—Lt. Blend. We haven't the space to give names of all

(Continued on following page)

Nationwide Dahlia News (Cont'd)

Blue Ribbon winners and I hope no ill feelings will be felt or held.

Other winning blooms were Vera Se-fang, Hester Pape, Windlassie, Lav-ender Queen, Bertha Shone, First Lady, Miss Macnib, Piquant and Pale Moon.

The Society wishes to thank one and all that helped to make this year's show a success.—Wm. C. Craine, Cor. Secy., Box 13 Smith's Ferry, Pa.

Ohio Valley Dahlia Asso.

The Ohio Valley Dahlia Association's Annual Dahlia Show of 1959 was held in Cincinnati's beautiful Art Museum. We again had to call upon our friend Mr. Jack Wilsey to take over the Chairmanship of Show and Judges, and as always, he did a very good job.

The long hot dry spell reduced our show about one half. The dahlias we did have made a very good exhibition. Our top honors were: Most Perfect Specimen was "**Pat Crowley**" by Jack Wilsey. Largest Bloom was "**Giant Beauty**" by Harold Vicroy. Most Perfect "A" was "**Kelvin**" by Harry Story. Most Perfect Ball was "**Snow White**" by John Dickman. Most Perfect Pom was "**Magaret Williams**" by W. C. Anderson. Most Perfect Min. was "**White Fawn**" by H. Hoggett. Home Achievement and A.D.S. Seedling Sweepstake Class was won by W. Huber with his seedling shown by Miss Alice Mattick. The flower was named "**Daisy Jones**" in honor of the Post-Times Star Garden Editor. Open to All Sweepstakes, by Miss Alice Mattick. Advanced Amateur Sweepstakes, by John Dickman. Amateur Sweepstakes, by Luther Auspach. School Children Sweepstakes, by Skip Menner. Open to All Artistic Arrangement Sweepstakes, by Miss Eliz. Geisman.

The Circulating Trophies were won by the following: The Garnet Huey, Chas. Pape, and M. Y. Thomas Trophies by Howard Ray. The Mattick and the Heepke Trophies by John Dickman. The Wilsey Cup by Harry Story. The Howard Ray Bowl by Jack Wilsey. The Marie Regina Emmerich Trophy by Harold Vicroy. The Gold Ribbon Dahlias were: **Pat Crowley**, **Kelvin**, **Giant Beauty**, **Surprise**, **Bor-**

am's Wonder, **Kidd's Climax**, **Golden Heart**, **Juanita**, **Eastern Echo**, **Clara Clemmons**, **Boram's Moonlight**, **Nutley Sunrise**, **Windlassie**, **Snow White**, **Mat-suo**, **Masterpiece**, **Clariam Parrish**, **Margaret Williams**.—Mrs. J. H. Dickman, Show Sec'y., Cincinnati 38.

Orange Co. Dahlia Society Inc.

This year, the membership of the Society voted to hold their Annual Show in Long Beach, at Wilton Hotel, Long Beach, with hopes of having a greater attendance at the Show. This was achieved, as visitors crowded the showroom for both days of the Show. A beautiful show greeted the visitors. Exhibitors from Santa Cruz to the north to San Diego to the south displayed their beautiful blooms to the public. Several novices exhibited for the first time. The success of the Show was due mainly to the hard work of our efficient Show Manager, Bob Pyle.

Sweepstakes winners were as follows: Novice, John Straemel, Amateur, Herbert Priess, Advanced Amateur, Alonzo Frazier, Commercial, Nat Lundgren, and Arrangements, Mrs. Charles B. Teter.

Preas Pride was judged the best A bloom in the Show, **First Lady**, best B bloom, **Rose Fletcher**, best BB, **Ruby Charm**, best miniature. Paul Comstock's **Lula Patti** won the A. H. A. medal and the A.D.S. "A" Seedling Sweepstakes. Nat Lundgren's **Peggy Ann** won the A. D. S. "B" Seedling Sweepstakes and his **Giant Beauty** was the largest in the Show.

Other blooms prominent as blue ribbon winners were: **Mary Elizabeth**, **Anneke Weidner**, **Ginny Johnson**, **Maureen Connolly**, **Baby Frontenau**, **Wanna**, **Piquant**, **Juanita**, **Snow Queen**, **Florisant**, **Little Willo**, **Margaret Williams**, **Golden Heart**, **Lavengo**, **Orfeo**, **Gerrie Hoek**, and **Vera Seyfang**.—Lawrence O. Archibald, Corr. Sec'y.

Virginia Dahlia Society

A quick run down on the Virginia Dahlia Show, held in the Old Dominion Room of Miller and Rhoads Dept. Store on Sept. 28th below:

Tri Color over 75 hills of Dahlias, (A) Benton Strong, with **Kidd's Climax**,

Vernon Ailstock, with **Brown Bomber**, Capt. W. R. Wright, with **Lavengro**, Capt. W. R. Wright, with **Surprise**; Tri Color over 75 hills of Dahlias (B) C. N. Gregory, with **Duet**, J. B. Eddins, with **Windlassie**, E. C. Belcher, with **Nutley Sunrise**, Capt. W. R. Wright, with **Clarian Idol**.

Tri Color, BB Dahlias open to all, J. B. Eddins, with **Southern Beauty**, Alton W. Smith, with **Doris Day**; Tri Color Balls, open to all, A. G. Chamberlayne, with **Red Bird**; Tri Color over 75 hills of Dahlias (Min.), A. G. Chamberlayne, with **Beatrice**, A. G. Chamberlayne, with **Princess Margaret**; Tri Color over 75 hills of Dahlias (Poms), A. G. Chamberlayne, with **Janis Gough**; Tri color under 75 hills of Dahlias (A) Tommy Eddins, with **Polly Bergen**, E. C. Belcher, with **Flying Saucer**; Tri Color under 75 hills of Dahlias (B) T. W. Sweeny, with **Windlassie**, F. J. Busch, with **Goody**; Tri Color under 75 hills of Dahlias (Min.) A. Graffam, with **Beatrice**, A. Graffam, with **Warren Goodwin**; Tri Color under 75 hills of Dahlias (Pom.) Tommy Eddins, with **Lady Lookout**; Tri Color Other Types open to all, Capt. W. R. Wright, **Kokette**; American Home Achievement Award, Alton W. Smith, **White Min. Dec.** (Peanuts); A. D. S. Seedling Sweepstakes Award 85.12 (Peanuts); Min. F. D. White Seedling of (Jo); Tri Color Arctic Div., Mrs. R. E. Bryant.

So another year rolls away and we all look forward to the year that we will beat this year's winners. Thanks to our twenty Judges who came so far and did so much for so little pay.—Alton W. Smith, Pres., 4309 Gaines Rd., Richmond 22, Va.

Southtown Dahlia Club Show (Chicago)

Most Perfect Bloom in Show, **Windlassie**, Dr. Wm. Van Horn, 2445 N. 73rd St., Wauwatosa, Wis.; Most Perfect A Bloom in Show, **Frieda Canning**, J. Clare Moore, Jr., 15525 Ridgway Ave., Markham, Ill.; Most Perfect B Bloom in Show, **Windlassie**, Dr. Wm. Van Horn, 2445 N. 73rd St., Wauwatosa, Wis.; 3 Most Perfect Miniatures in Show, **Orange Baby**, Roy Greene, 506 Eugenia St., Lombard, Ill.; 3 Most Perfect Pompons in Show, **Ginette**, Roy Greene, 506 Eugenia St., Lombard, Ill.;

3 Most Perfect Other Type Small Dahlias, **La Giaconda**, Mrs. Shirley Makowski, 3705 S. Herman St., Milwaukee, Wis.; Largest Bloom in Show, **Mary Elizabeth**, (12¼ x 9¾), Bernard Wright, 1401 S. 7th Ave., Maywood, Ill.

The Big Ten—Ten most perfect disseminated, **A Size Dahlias**—10 different varieties; **Mary Elizabeth**, Martin Dunsford, George Wilson, Great Lakes, Lavengro, White Nobby's Light, Orange Majesty, Judith, Art Linkletter, Vera Seyfang, Dr. Wm. Van Horn.

The Little Ten—Ten most perfect disseminated, **B size Dahlias**—10 different varieties: **Priscilla**, Fortune, Florence Chadwick, Palace, Grandezza, Wagschall's Goldkrone, Mrs. Dale, Peach Blend, Fair Lady, Chamoisette, Dr. Wm. Van Horn.

The American Home Achievement Medal was awarded to Norman E. Sutherland, Kimberly, South Africa, for his **Kimberly Jewel**—a B size, cactus dark blend, color red blended with white 7" x 4"—grown by Summit Gardens.—G. L. Pierce.

The A. D. S. Seedling Award Winner was "**American Beauty**," a red formal decorative miniature, it scored 85—the originator and grower is Nick Kindlein—1390 Skokie Highway, Lake Forest, Ill. There were 1869 Blooms on display and 41 artistic arrangements.—Mrs. Edward S. Dickhoff, 13813 S. Wabash Ave., Chicago 27.

Scioto Valley Dahlia Society

Our 8th annual show was far below our shows of previous years due to the extreme dry weather in this area and the early frost north of here. Most of our exhibitors came from the Ohio River Valley.

The best A bloom of the show was "**Leading Light**," by Mr. and Mrs. H. H. Robens, Chagrin Falls Ohio. "**Leading Light**" was also the largest bloom selected from blue ribbon winners. The best B bloom of the show was "**Iva Jean**," Howard A. Ray, Cincinnati, Ohio. The best Ball was "**Mary Helen**," and the best Pom Pom was "**Clarisse**" both exhibited by Mr. and Mrs. Earl Weave, Portsmouth, Ohio. The best Miniature was "**Zest**," Mrs. R. D. Sprouse, Chillicothe, Ohio.

Mr. and Mrs. H. H. Robens received
(Continued on following page)

Nationwide Dahlia News (Cont'd)

the American Home Achievement Medal and also the A. D. S. Seedling Sweepstakes award for their seedling, "**Fabulous**." The most outstanding arrangement was made by Mrs. Reginald Blue, Frankfort, Ohio. Sweepstakes in the A class was taken by Fred Mootz, Franklin Furnace, Ohio. Sweepstakes in the B class was taken by Harold Vicroy, New Richmond, Ohio. Ball, Pom Pom and Miniature and Grand Sweepstakes were taken by Mr. and Mrs. Earl Weaver.

Grand Sweepstakes in Artistic Division, by Mrs. C. W. Hedges, Ashville, Ohio. Grand Sweepstakes in the Seedling Division, by Mahlon Cork, Chillicothe, Ohio.

The names of some of the Special ribbon winners selected from blue ribbon winners were: **Nutley's Surprise**, **The Cardinal**, **Iva Jean**, **Kelvin**, **Leander**, **Windlassie**, **First Lady**, **Juanita**, **Ruby Charm**, **Mary Helen**, **Clarisse**, **Real Pleasure** and **Leading Light**.—C. H. Bowen, Sec., 448 Arch Street, Chillicothe, Ohio.

Yazoo County Dahlia Society

The third annual dahlia show of the Yazoo Dahlia Society was held October 11 and 12 at the local high school building. 10 members showed 122 horticulture specimens and collections while the local garden clubs displayed 35 arrangements.

Approximately 150 visitors from surrounding towns registered during the two day show. Dr. H. C. Rike and Mr. George Alderson of Birmingham judged horticulture and Mrs. Rike and Mrs. A. K. Primos of Jackson, Mississippi, judged the arrangement division.

In the horticulture divisions, 49 blue ribbons were awarded, 18 red ribbons and 1 white. Two purple ribbons and 16 special awards were also given. In the arrangement division, 13 blue ribbons, 10 red ribbons, 7 white ribbons and one special award were given. The tri-color was awarded to Mrs. Joe Morrow for her arrangement "Beauty on the Yazoo" featuring driftwood in combination with the lovely **House of Orange** dahlia. The special award went to Mrs. Edwin Sanders for **Mission Bells**. This arrangement was done in an Etruscan cup with a line mass of **Lillianne Bal-**

lego, **acalphy** and **castor bean** leaves.

An outstanding "A" type dahlia was **Monarch of the East**. **Gerrie Hoek** was also very predominant in both horticulture and arrangements. Another outstanding small dahlia was **Doris Day**. The weather has been most inclement the past three weeks and our show was not up to par. However, we were delighted with the number of blooms, the enthusiasm of the participants and luncheon following the completion of those attending.

The judges were entertained at the judging after which they returned to their respective homes.—Harry S. Barbour, P.O. Box 13, Yazoo City, Miss.

San Diego Co. Dahlia Society

Sensation of this Society's 19th annual show August 1 and 2, was a dark red informal seedling which measured 15½ by 9½ inches to be judged largest of show. It was shown by R. Paul Comstock, of Solana Beach, Cal. Comstock also had best bloom of show, **Surprise**, which had been best in the open to all class, and best large of show. **First Lady**, shown by Mr. and Mrs. R. M. Middleton, of San Diego, was best B medium. Smallest in show was **Topmix Rosa**, and smallest pom, **Gold Dust**.

After bringing 150 flowers 500 miles from Santa Cruz, Nat C. Lundgren won open sweepstakes, and took the American Home medal with **Peggy Lyn**. The flower, B size formal of rich yellow blending into crimson at the tips, also scored 85 in the A. D. S. Sweepstakes.

Best five blooms in the show was **First Lady**; Best five BB, **Mouney C**, and best three, Mrs. D. W. Nicholas. Court of honor: **Groucho Marx**, **H.M.S. Queen Elizabeth**, **Croyden's Masterpiece**, **Arthur Godfrey**, **Mary Elizabeth**, **Detroit**, **Kidd's Climax**, **Smokey**, **Fresco**, **Lavengro** (2), **Town Topics**, **Mrs. McDonald's Quill**, **Silver Wedding**, **First Lady** (2), **Golden Heart** (2), **Windlassie**, **Independence**, **Aristocrat**, **Juanita**, **Val St. Lambert**, **Ballego's Glory**, **Grace**, **Mellisande**, **Piquant**, **Nita**, **Rosy Dawn**, and a number of seedlings.

Small flower winners included **Al-**

bino, Master Michael, Pom of Poms, Pipe's Noire, Kasasgi, Betty Ann, Regulus, Cinnamon Gem, Ginny Johnson.

* * *

The San Diego County Dahlia Society joined with other flower growing groups this year to help make the flower show of the county fair the largest floral exhibition of the West. Ten acres were under cloth for the flowers and landscape exhibits, June 27 to July 5.

As a part, dahlia judging was conducted on five of the 10 days, and the society maintained an information table throughout.

Best flowers selected on the five days were Lavengro, Nita, First Lady, Janet Beckett, and Night Editor. After judging each time, all flowers remained on exhibit for two days.—Larry Sisk, 3179 No. Mt. View Dr., San Diego.

Fresno Co. Dahlia Society

The fifth annual Dahlia Show of Fresno County Dahlia Society was very successful, especially in view of the fact that California had extremely hot weather again this year.

Mr. Frank Galle won the American Dahlia Society Medal for Best Flower in Court of Honor. He also won a trophy for the Largest Flower of the show and a trophy for the 3rd Year Seedling.

Roy Stienhauer won Sweepstakes trophy for Amateurs with 100 plants or more—also won Sweepstakes for show.

Mrs. Harold Streit won the Sweepstakes arrangement in the A or Amateur Division. Mrs. Charles Seeley won the Sweepstakes in the B or Novice Division. Jack Arnold won the Sweepstakes for the show in the Novice Division. George Jacobsen from Pete's Dahlia Gardens, Tulare, won the trophy for the Best Commercial Display.—(Mrs.) Paulyne Seeley, 2845 No. Fruit St., Fresno.

North Jersey Dahlia Society

Another Dahlia Show has gone into the records and we are happy to say that despite the bad growing season and ten days of rain prior to our show date we were still able to hold our own and did fairly well with our entries. Our show hall was spacious and would have held many more blooms but we

CLOSING DATES FOR REPORTS

Jan. 10 for Feb. issue

April 10 for May issue

July 10 for Aug. issue

Oct. 10 for Nov. issue

Please send Reports by the above dates if you wish them included in following issue.

ALSO — Make Them BRIEF.

AND — Typewritten.

LENGTH — Participating, not over 270 words, 45 lines of type — 5 inches. Affiliated, not over 180 words, 30 lines of type, or 3½ inches. (Count 6 words typewritten, as one line of 8 point type as printed in the Bulletin.)

are satisfied to have so many flowers for such a poor season. Our medal exchange is doing well and although we did not have as many as last year we hope to have the societies we do exchange with put on a permanent basis. We had a new medal made this year as we were not satisfied with the original one and we are proud of the new one and hope we will have more to exchange next year. Some of our members traveled to the Mid-West conference show in Pittsburgh and then went on to Cleveland and came back to report a most wonderful time.

We have had a new slate of officers and the following will be installed at the Annual Banquet to be held at Scordato's on November 1st, President—Ed. Steele; Vice Pres.—Boyd Bryson; Treasurer—Carl Wagner; Secretary—Ann M. Church, 1480 Albs Rd., Wayne, N. J.

BALLEGO

LEIDEN

HOLLAND

Apply for Ballego's
Well-Illustrated Catalogue
(Ask for it by Airmail)

Over 600 varieties from all over the world listed in big Catalogue. They represent every color and type yet known. Send for Complete Information re Importation.

FOR ANY CLASS-A WINNER

Do You Like This, the Largest A. D. S. Bulletin in 45 Years

This is the largest A. D. S. Bulletin, in number of pages, ever Published by this Society, in its 45-year history.

The largest one previous to this, and we searched clear back, was the November, 1934, issue which had 55 pages. In those "good old days" the page size was larger, measuring, $6\frac{1}{4}$ by $8\frac{1}{4}$. Also, in those days, there were more dahlia firms doing business and advertising in this publication. We were editor then too, in our first attempt, also advertising manager. And we can clearly recall that it was not difficult to get dahlia firms to advertise. There was an Association of Commercial Dahlia Growers, with 59 members. Its emblem stood for "integrity—reliability—and a square deal." Thomas Leavitt, of Assinippi Falls, Mass., was its secretary. Of the 59 members of the Association in 1934, only two, Dahliadel and Ruschmohr are still in business. Of the 46 Bulletin advertisers in 1934 only six are still in business, and five of them are still Bulletin advertisers.

Times Change, As Well as Dahlias

This shows the changing times in the Dahlia World. It also shows the great mortality among Dahlia Commercial Firms in 25 years. If it were not for the new Dahlia Firms which have started business, and are advertising in this Bulletin, it is probable that there would not be any A. D. S. Bulletin published today. For it would not be possible in all probability, that this publication could survive without advertising. Certainly you, the reader, would not be receiving a 60 page November issue.

But in this issue, instead of 46 advertisers, there are only 17, or only 38 per cent as many as 25 years ago. And there is only one reason that the advertisers use space in these pages and thus pay a large percentage of the cost of publishing it. That is the hope that its readers will buy enough of the dahlia roots and plants which they offer for sale, to pay them for the money they pay the A. D. S. for space.

Do You Read the Advertisements?

So many write us that they like the Bulletin. We are pleased to receive such praise. It is our only compensation for

the many worries and hours spent in producing it. We hope our readers will keep on commenting on it. We like criticisms too, when they are constructive. But if you can't both praise the Bulletin and buy from its advertisers, please write to the advertisers, enclosing a check, and order some new varieties for your garden. Because, if the advertising pays out, through the patronage of A. D. S. members, advertisers keep on using space. And that keeps the Editor and Advertiser very happy. It is the sincerest form of praise. And it is the only real insurance that the Bulletin will continue to be published. For, let's face it, without the advertising revenue, the Bulletin, at most, would only consist of a few pages per issue, with only very brief dahlia news articles and society reports.

Advertisers Not Asked for "Support"

We only sell space in the Bulletin on the basis of the "returns" it will bring to him, (or her) We never ask him (or her) to help keep the Bulletin functioning by sending in his advertisement. Even though our good friend, Dr. C. E. Wildon once said, "It is what the A. D. S. Bulletin does and says to stimulate interest in dahlias that is of inestimable value to every commercial dahlia grower," we believe that among the 3,000 to 4,000 readers of this Bulletin there are lots of "orders" sent in answer to Bulletin advertisers. We have much evidence to support this, from long time space users. Not every advertisement pays out, though. That happens in publications with much larger readership than this Bulletin. But we have ample proof that well written copy, offering something our readers want, and repeated regularly, does pay.

Bulletin Advertisers Are Reliable

Insofar as it is humanly possible, this Bulletin sees that its readers get "value received" from its advertisers. It reserves the right and has exercised it on several occasions, to refuse its columns to advertisers whose reliability has been questioned. We believe that its readers can and should get their money's worth. That is the Bulletin "Platform."—Lynn B. Dudley.

Statement of the Ownership, Management, and Circulation

Required by the Act of Congress of August 24, 1912, as Amended by the Acts of March 3, 1933, and July 2, 1946. (Title 39, United States Code, Section 233)

Of The BULLETIN of the American Dahlia Society, Inc., published quarterly at New York, N. Y., for November 1, 1959.

1. The names and addresses of the publisher, editor, managing editor, and business managers are:

Publisher, The American Dahlia Society, Inc., 22 Reade St., New York City. Editor, Lynn B. Dudley, 25 Irving Place, New Rochelle, N. Y. Managing Editor, same. Business Manager, same.

2. The owner is: The American Dahlia Society, Inc., 22 Reade St., New York City. No stockholders (Non Profit Organization). President, Bert Pitt, 9730 123rd Street, Richmond Hill 19, L. I., N. Y.; Vice-President, H. Dewey Mohr, 38 Vincent Ave., Rockville Centre, L. I., N. Y.; Secretary, Edward B. Lloyd, 10 Crestmont Rd., Montclair, N. J.

3. The known bondholders, mortgages, and other security holders, owning or holding 1 per-

cent or more of total amount of bonds, mortgages, or other securities are: None.

4. Paragraphs 2 and 3 include, in cases where the stockholder or security holder appears upon the books of the company as trustee or in any other fiduciary relation, the name of the person or corporation for whom such trustee is acting; also the statements in the two paragraphs show the affiants full knowledge and belief as to the circumstances and conditions under which stockholders and security holders who do not appear upon the books of the company as trustees, hold stock and securities in a capacity other than that of a bona fide owner.

5. The average number of copies of each issue of this publication sold or distributed, through the mails or otherwise, to paid subscribers during the 12 months preceding the date shown above was: (This information is required from daily, weekly, semiweekly, and triweekly newspapers only.)

LYNN B. DUDLEY, Editor
Sworn to and subscribed before me this 10th day of November, 1959.
(SEAL)

ANDREW J. MULCAHY

Notary Public,

State of N. Y.,

March 30, 1960

A.D.S. MEMBERSHIP BLANK

Use This Blank to Renew Your Membership
Or Give a Friend a Membership for Christmas

American Dahlia Society, Inc.

Harry A. Dreyer, Treasurer

431 Lincoln Ave., Ridgewood, N. J.

Please (Renew) (Enter) my membership in the American Dahlia Society. Enclosed find (check) (money order) for \$4.00, of which \$3.00 is for the annual subscription to the Bulletin of the American Dahlia Society, published quarterly.

A special Subscription Rate of \$3.00 per year is made to Libraries, Schools, etc. and persons not members of any dahlia society.

Name.....

Street No.....

City..... State.....

Name and Address for a

Friend's Xmas Present

A. D. S. ELECTION OF OFFICERS

The Nominating Committee presents a slate for 1960 as listed on the ballot below.

Active members in good standing shall be entitled to cast two votes. Sustaining and life members, the same.

Participating members shall be members of Participating Societies who have been duly accepted as members. Each Participating Member shall have one vote.

Be sure to mail your ballot before January 2, 1960, to Harry Dreyer, Treasurer, 431 Lincoln Ave., Ridewood N. J.

VOTE

FOR THE ELECTION OF OFFICERS OF THE AMERICAN DAHLIA SOCIETY, INC.

The Officers placed in nomination by the Nominating Committee to serve the American Dahlia Society for 1960, or until their successors are elected or appointed, are as follows:

- ☐ *For President:* Bert Pitt, Richmond Hill, L. I., N. Y.
- ☐ *For Secretary:* Edward B. Lloyd, Montclair, N. J.
- ☐ *For Assistant Secretary:* Mrs. D. Meyer, Bergenfield, N. J.
- ☐ *For Treasurer:* Harry Dreyer, Ridgewood, N. J.
- ☐ *For Trustee to 1961:* John Metzger, 128 Allen St., Irvington, N. J.

For Vice-President (vote for 25 or more)

- ☐ L. C. Bennett, St. Louis, Mo.
- ☐ J. Ralph Berry, Cleveland, Ohio
- ☐ Emil Berzau, Merrick, N. Y.
- ☐ Leslie Bowling, Route 2, Fairfield, Pa.
- ☐ Conrad Brieger, Baltimore, Md.
- ☐ Dr. Julian Brandon, Jr., Sebastopol, Calif.
- ☐ George Brunjes, Elmira, N. Y.
- ☐ Gregory Christopan, Birmingham, Ala.
- ☐ R. Paul Comstock
- ☐ Robt. T. Connal, Rochester, N. Y.
- ☐ Dr. C. H. Connors, Highland Park, N. J.
- ☐ Ward H. Cook, M.D., Little Falls, N. Y.
- ☐ H. L. Cummings, LaGrange, Ill.
- ☐ Hon. George R. Currie, Madison, Wisc.
- ☐ Tony De Rooy, Monroe, Washington
- ☐ Charles M. Diffenderfer, Baltimore, Md.
- ☐ R. T. Eddy, Encinitas, Calif.
- ☐ C. E. Faust, Atlanta, Ga.
- ☐ Harry Frank, Far Hills, N. J.
- ☐ Walter Gaines, Birmingham, Ala.
- ☐ Joe Gambi, Rivervale, N. J.
- ☐ Martin Guttler, Huntington, N. Y.
- ☐ Hobart Jordan, Santa Ana, Calif.
- ☐ Mrs. F. H. Fisher, Trenton, N. J.
- ☐ Paul F. Frese, White Plains, N. Y.
- ☐ Louis Gill, Baltimore, Md.
- ☐ Paul Hale, Brighton, Ill.
- ☐ Walter Hardesty, Watertown, Conn.
- ☐ R. E. Harter, Alamo, Calif.
- ☐ William Holmberg, Minneapolis, Minn.
- ☐ J. E. Hulin, Port Orchard, Wash.
- ☐ Mrs. Georgena Humble, Douglaston, N. Y.
- ☐ Stanley Johnson, Cheltenham, Pa.
- ☐ J. W. Johnston, New York City

- ☐ Dr. L. E. Jordan
- ☐ Clarence R. Kallquist, Chattanooga, Tenn.
- ☐ Edw. Keck, Ferndale, Pa.
- ☐ Mrs. Louise Kleinjohn, Louisville, Ky.
- ☐ Fred Knocke, M.D., Readington, N. J.
- ☐ Nick Koenig, New Baltimore, Mich.
- ☐ Carl Lundvral, San Leandro, Calif.
- ☐ Arthur S. Mason, Arlington, Va.
- ☐ John Metzger, Irvington, N. J.
- ☐ H. Dewey Mohr, Rockville Center, N. Y.
- ☐ William Noonan, Bethpage, N. Y.
- ☐ Edward J. O'Keefe, Cold Spring, N. Y.
- ☐ Henry Olsen, Elmont, L. I., N. Y.
- ☐ Lawr. Palmentieri, Richmond Hill, N. Y.
- ☐ Albert Parrella, Bronx, N. Y.
- ☐ E. R. Phillips, Washington, D. C.
- ☐ Anthony Pietruszkiewicz
- ☐ C. H. Rike, M.D., Birmingham, Ala.
- ☐ Christian Rissmeyer, Farmingdale, N. Y.
- ☐ Frank Seaman, Danbury, Conn.
- ☐ John Sherwood, Pikesville, Md.
- ☐ Dr. A. C. Stevens, Atlanta, Ga.
- ☐ Charles Stoeckel, Paterson, N. J.
- ☐ T. C. Solem, Minneapolis, Minn.
- ☐ Will J. Stone, Westwood, N. J.
- ☐ George Swezey, Columbia, N. J.
- ☐ Adrian P. Taylor, Santa Ana, Calif.
- ☐ Wm. L. Tilton, Glen Cove, L. I., N. Y.
- ☐ John S. Vincent, White Marsh, Md.
- ☐ Charles Watson, Chattanooga, Tenn.
- ☐ Roy W. Webb, Scranton, Pa.
- ☐ Dr. C. E. Wildon, East Lansing, Mich.
- ☐ E. J. Wind, Columbia Station, Ohio
- ☐ Mrs. Sarah W. Wood, Southport, Conn.
- ☐ Myrtle Wilson, Bakersfield, Calif.

Note: If you are an active or sustaining member in good standing, or a life member, your vote will be counted as two (2) votes for each officer voted for. If you are a participating (Participating membership classification) your vote will be counted as one (1) vote. Be sure to mail this ballot before January 2, 1960, to Harry Dreyer, 431 Lincoln Ave., Ridgewood, N. J.

Note 2: You have privilege of voting for other A. D. S. members in place of those nominated above, provided that the written acceptance of said candidate, properly sworn to before a legal officer, has been filed with the Secretary of the American Dahlia Society prior to the publication date of the November A. D. S. Bulletin. (It requires twenty-five (25) votes to elect.)

Your signature here, please

Address.....

If a member of a Participating Society please note which.....

Win in 1960 With these Parrella Beauties

New American and Japanese

A. D. S. Certificate and Sweepstakes Winners

We can truthfully say that we have never let our customers down. If ever you, or any other purchaser of our dahlias has had any complaint over prompt receipt, true-to-name shipments, condition of plant material on arrival, or any other matter, you know that Parrella ALWAYS makes good.

This season we offer three outstanding New dahlias.

MISS PATRICIA MURPHY, "A," Inf. Dec. Persimmon Orange, a combination of Turkey Red and Maize Yellow. Size 10½ by 5½ inches; strong stems, 6 to 8 inches; bush 4½ ft.; stands hot weather better than most; really prolific bloomer; Won American Home Achiev. at A.D.S. Show, 1959. Won two A. D. S. Sweepstakes, 1959. (Tomczak-Parrella.)



MISS PATRICIA MURPHY

Roots, \$15.00 Net. Plants, \$5.00 Net.

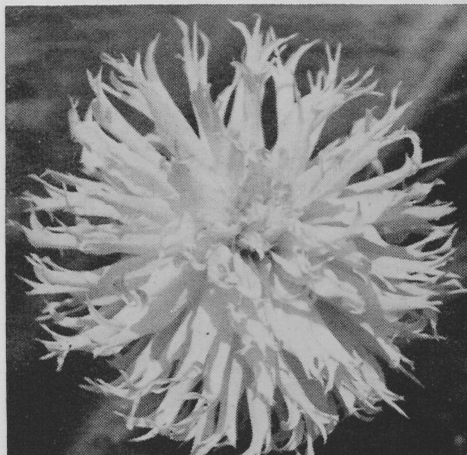
TUKI YORI NO SHISHA, "B" Str. Cac. White; size, 7½ by 4½ inches; Blooms held facing; bush, 4 to 5 ft.; petals deeply serated, and curling at ends, giving it a full-of-petals look; blooms early. A. D. S. Certificate, Farmingdale, 1959. (Yoshida-Parrella.)

Roots, \$15.00 Net. Plants, \$5.00 Net.

SEI KI, "A," Semi-Cac. Said to be the largest dahlia ever seen in Japan. Size here in 1959, 12" by 6" and up; Color, Dutch Vermillion, (bright, soft red); bush 5 ft.; blooms facing; stems long, strong. (Nakanishi-Yoshida-Parrella.)

Roots, \$15, Net. Plants, \$5.00 Net.

TUKI YORI NO SHISHA



Send for our Illustrated Catalogue, FREE.

Ready in Feb. Inquire about Our Fine Seed.

ALBERT PARRELLA

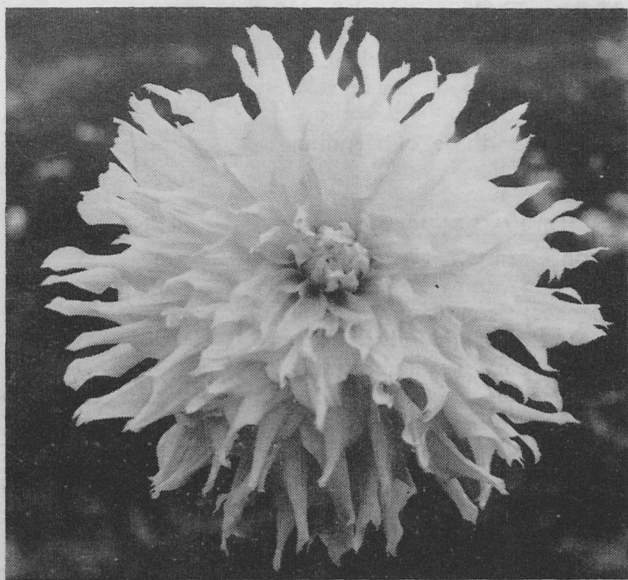
DAHLIA GARDENS

3380 Ely Avenue

Bronx 69, New York

Comes Another Great Comstock Dahlia LULA PATTIE for 1960

Winner of A. D. S. Derrill Hart Medal



LULA PATTIE, A — I. D. White

LULA PATTIE, I. D., White. Here is a most beautifully formed Inf. Dec. to S. C. White dahlia, "A" size. It is the third 4 to 5-time winner at the A. D. S. Trial Gardens. The first was Florence Chadwick and the second in 1956 was Mouney C. All were white dahlias. LULA can be a winner for largest bloom, yet it is not coarse. Well grown but not "pushed," it blooms about 12" by ten inches deep. Forced some, it will go to 14" x 12". Stems very straight and strong. Rugged grower; excellent foliage. Blooms facing and sometimes slightly up. We promise you a great dahlia in this 1960 introduction. Prolific Bloomer even for a big one. Blooms early and late.

It won the coveted A. D. S. Trial Garden Derrill Hart Medal, with average score 85.82 in 5 gardens. Also won American Home Achievement Medal and A. D. S. Seedling Sweepstakes in several shows. **Roots only, Good Strong Divisions, \$20.00 Net.**

Write for Catalogue, Please.

NATIONAL BLUE RIBBON DAHLIA SEED

Mixed	Specified Varieties	Quality Plus
25 Seed, \$1.25	25 Seed, \$1.50	25 Seed, \$ 2.50
100 Seed, \$5.00	100 Seed, \$6.00	100 Seed, \$10.00

COMSTOCK DAHLIA GARDENS

145 Dahlia Drive

P. O. Box 308

Solana Beach, Calif.