

BULLETIN

of the

AMERICAN DAHLIA SOCIETY

AUGUST – 1959

Published Quarterly – Third Quarter



J. Louis Roberts Died July 17th

Beloved by dahlia people all over America, "Lou" Roberts wrote about, talked about, and literally "lived" with dahlias for some 45 years. One of 4 Flower Grower Honor Roll Testers for nearly 20 years and judge at shows east and west, he will be sadly missed by all of his host of friends.

(Photo, Courtesy Flower Grower)

DAHLIA SHOWS ACROSS THE NATION

Date	Society	Place	City
Aug. 15-16	Inglewood Dahlia Society	Armory, Grosvenor St.	Inglewood, Calif.
Aug. 20-23	Kitsap Co. Dahlia Society	Kitsap Co. Fair Grounds	Bremerton, Wash.
Aug. 22-23	Snohomish Co. Dahlia Soc.	Floral Hall, Forest Pk.	Everett, Wash.
Aug. 22-23	East Bay Dahlia Society	New Garden Cen., Lakeside Pk.	Oakland, Calif.
Aug. 29-30	San Leandro Dahlia Society	Bancroft Jun. High School	San Leandro, Calif.
Aug. 29-30	Seattle Dahlia Society (Host to Pacific Northwest Conference)	Green Lake Field House	Seattle, Wash.
Aug. 29-30	Michigan Dahlia Association	Civic Auditorium	Lansing, Mich.
Aug. 29-30	Orange Co. Dahlia Society	Wilton Hotel	Long Beach, Calif.
Sept. 5-6	So. Oregon Dahlia Society	Blossom Gulch School	Coos Bay, Ore.
Sept. 5-6	Wash. State Dahlia Society	Norman Hall	Tacoma, Wash.
Sept. 5-6	Wisconsin Dahlia Society		Milwaukee, Wis.
Sept. 5-6	North Jersey Dahlia Society	Grange Hall, Hamburg Tw'p.	Wayne, N. J.
Sept. 6-7	Minn. Dahlia Society	Minn. State Fair Grounds	Minneapolis, Minn.
Sept. 6-7	Badger State Dahlia Society	Community Center	Madison, Wis.
Sept. 9-10	Conn. State Dah. Soc. (NEW)	Waterbury Shopping Cen.	Waterbury, Conn.
Sept. 13	Southern Tier Dahlia Society	Mark Twain Hotel	Elmira, N. Y.
Sept. 12-13	Greater Pittsburgh Dahlia Soc. (Host to Mid-West Show and Conference)	Penn-Sheraton Hotel	Pittsburgh, Pa.
Sept. 12-13	Southeastern Mich. Dah. Soc.	O'Shea Memorial Gym.	Detroit, Mich.
Sept. 12-13	Irvington Garden Club	Irvington High School	Irvington, N. J.
Sept. 14-15	Dahlia Society of Ohio	Higbee Auditorium	Cleveland, Ohio
Sept. 16-17	Burholme Hort. Society	Cheltenham Fed. & Loan Ass'n	Philadelphia, Pa.
Sept. 19-20	Rochester Dahlia Society	Museum of Arts & Sciences	Rochester, N. Y.
Sept. 19-20	Long Island Dahlia Society	Green Acres Shop. Center	Valley Stream, N. Y.
Sept. 19-20	Bergen Co. Dahlia Society	Bergen Mall, Exhib. Hall	Paramus, N. J.
Sept. 19-20	Fresno Dahlia Society	Roosevelt High School Cafeteria	Fresno, Calif.
Sept. 19-20	Dahlia Society of Tenn.	East Ridge Town Hall	Chattanooga, Tenn.
Sept. 19-20	Dahlia Society of Kentucky	Kentucky Hotel	Louisville, Ky.
Sept. 19-20	Greater Philadelphia D. Soc.	W.C.A.U.—TV Center	Philadelphia, Pa.
Sept. 19-20	Baltimore Dahlia Society	Eastport Auditorium	Baltimore, Md.
Sept. 19-20	Scioto Valley Dahlia Soc.	Ross Co., Fair Grounds	Chillicothe, Ohio
Sept. 23-24	American Dahlia Society and Dahlia Society of N. J.	Garden State Plaza Lower Level, Building "F"	Paramus, N. J.
Sept. 26-27	Mid-America Dahlia Society	Plaza Central Park	Kansas City, Mo.
Sept. 26-27	Greater St. Louis Dahlia Society		St. Louis, Mo.
Sept. 26-27	Southtown Dahlia Club	Marquette Park Field House	Chicago, Ill.
Sept. 26-27	Dahlia Society of Alabama	Thomas Jefferson Hotel	Birmingham, Ala.
Sept. 26-27	Ohio Valley Dahlia Ass'n	Cin. Art Museum, Eden Park	Cincinnati, Ohio
Sept. 26-27	National Capital Dahlia Society (Host for 5th Mid-Atlantic Conference Show)	U. S. Botanic Garden	Washington, D. C.
Sept. 26-27	Indianapolis Dahlia Society	Brookside Park. Com. House	Indianapolis, Ind.
Oct. 3-4	Dahlia Society of Georgia (Host to Southern States Association)	Southeastern Fair Grounds	Atlanta, Ga.
Oct. 3-4	Greater Kansas City Dah. Soc.	Shawnee Mission High School	Mission, Kan.
Sept. 11-12	Yazoo Co. Dahlia Society	Yazoo High School	Yazoo City, Mo.

Advertising Index

	Page
Ballego & Sons.....	21
Fa. D. Bruidegom.....	27
Dahliadel.....	13
Wm. Du Ruyter.....	23
Jas-Mar Dahlia Gardens.....	16
Parrella Dahlia Gardens.....	14
Pennypack Gardens.....	17
Ruschmohr Dahlias.....	18

ADVERTISING RATES

Minimum space accepted one-eighth page.
See Special Discounts for 2 and 4 consecutive insertions below.

	One Issue	Two Issues	Four Issues
Full Page.....	\$ 80.00	\$145.00	\$280.00
Half Page.....	50.00	90.00	172.50
Quarter Page.....	35.00	60.00	115.00
Eighth Page.....	20.00	35.00	67.00
Center Spread (2 Pages).....	165.00	300.00	590.00

When ordering 2 or 4 consecutive issues, advertiser will be billed for all insertions ordered, within 10 days of publication of the first one. The entire amount for all advertisements ordered will be immediately due, without further discounts, unless credit has been previously established, and payments arranged with Treasurer Harry Dreyer.

SPACE SIZES

Full Page.....	4½ by 7⅞ inches
Half Page.....	4½ by 3½ inches
Quarter Page.....	2⅞ by 3½ inches
Eighth Page.....	2⅞ by 1¾ inches

CLOSING DATES FOR ADVERTISING

February—JAN. 15; May—APR. 15;
August—JULY 15; November—OCT. 15.

Second Class Postage Paid at the Post Office at New York, N. Y., under Act of March 3rd, 1879.

BULLETIN of the American Dahlia Society

Contents for August, 1959
SERIES XXXIII, No. 3

CONTENTS

	Page
Virus Diseases of the Dahlia (Mildner), conclusion.....	4- 6
1959 Annual Exhibition.....	7- 8
Four Dahlia Pioneers Pass On.....	9-11
A. D. S. Membership Upswing.....	11
A. D. S. Executive Committee Adopts the 6" to 9" size for "Bs".....	12
A. D. S. Seedling Sweepstakes.....	14
Many Varieties at Trial Gardens.....	15
West Coast News.....	16-19
Dahlia Society of California Welcomed....	20
Dahlia People Here and There.....	21
Editorial.....	22-23
Nationwide Dahlia Society News.....	24-29

Membership dues in the American Dahlia Society, \$4.00 per year, of which \$3.00 is for the annual subscription to the Bulletin of the American Dahlia Society, published quarterly.

Send membership dues and Research Fund Contributions to the Treasurer of the Society, Harry Dreyer, 431 Lincoln Avenue, Ridgewood, N. J.

Address all editorial and advertising copy to the Editor - - LYNN B. DUDLEY
25 Irving Place, New Rochelle, N. Y.

Publication Office

THE AMERICAN DAHLIA SOCIETY, INC.
22 Reade St., New York 7, N. Y.

VIRUS DISEASES OF THE DAHLIA

By Roland A. Mildner, Jr.

Second and Concluding Chapter of this Preliminary and Important Study of Devastating Dahlia Diseases.

If this Study by Rowland A. Mildner, of the Department of Botany and Plant Pathology of Michigan State University, made with meticulous care from all available sources and records, proves only one thing, it is that the Dahlia World must have more facts and knowledge of how to eradicate these virus scourges from its gardens. The **Only Way** this can be accomplished is through **More Research**. The **Only Way** we can have continued research is to pay for the time and material costs of the Pathologists and Entomologists who will undertake it.

The A. D. S. is asking its members to contribute to a Research Fund of \$5,000.00 to continue these Dahlia Virus Studies and other vital Research Projects in the next two years. Mr. Mildner has said that he would continue these studies, providing some Scholarship Funds are made available to permit him to work on this particular Project, rather than some other one. He wrote the Editor in June, "The article appears very well in the May Bulletin. I appreciate very much, your publishing the results of the Preliminary Virus Study. It is in great demand here at Michigan State and I would like to have some extra copies of the May issue, please. Hope it can be worked out somehow so that the research can be continued." Rowland A. Mildner.

Why not help to make this possible by sending your contribution, NOW, to Harry A. Dreyer, Treas., 431 Lincoln Ave., Ridgewood, N. J. (Please mark it FOR A. D. S. Research.)

The Dahlia Virus Article continues —

Unfamiliarity with disease symptoms or refusal to recognize the possibility of the presence of disease has contributed to the present unsatisfactory condition of some plantings." Deficiency symptoms in crops other than dahlias do not occur in occasional scattered plants, but rather instead the whole planting or an area of a planting is affected. There is every reason to believe that this is also true of dahlias. The symptoms of the virus diseases as outlined in this paper are clearcut in most cases and cannot reasonably be confused with nutrient deficiency symptoms. The fact that the conditions can be transmitted from

plant to plant makes it clear that an infectious virus is involved.

Inspection and Certification

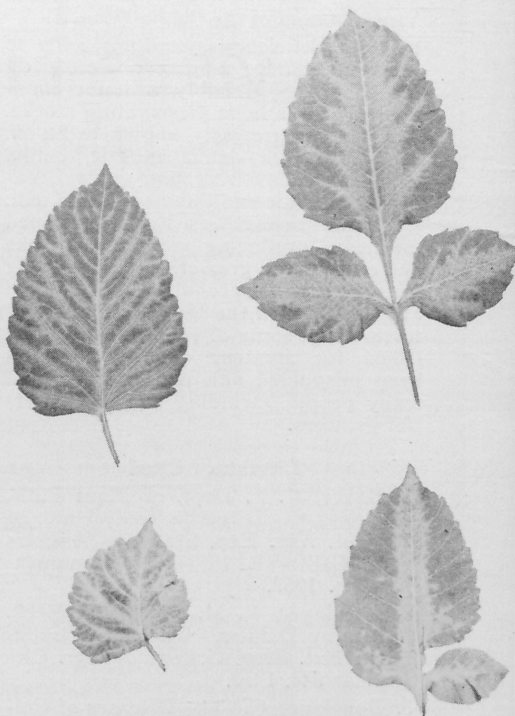
The problem of inspection and certification of dahlia crops is an important one, and not only to dahlia growers. For example, it is very difficult or even impossible to distinguish between dahlia ringspot and tomato spotted wilt in dahlia. There is great danger, therefore, of spreading tomato spotted wilt virus to tomatoes, ornamentals and the rest of the wide host range of this virus. This is a very serious problem in many areas. Also, ringspot infected plants serve as a source of inoculum to all dahlias, the intolerant varieties as well

as the tolerant. If we propagate only tolerant sorts we will have to restrict our varietal selection very greatly. Of course, the problem as far as inspection is concerned is to devise a satisfactory and efficient system. In most cases the present methods leave much to be desired.

Since symptom expression often is delayed, it is probable that many dahlia certification inspections are made too early in the season. Late season infections from the previous year simply do not exhibit their symptoms soon enough. Ideally there should be several inspections, and certainly there should be one late in the season. For many practical reasons this is difficult, especially, since the inspectors may be rushed during certain seasons. However, if inspections cannot be made at the proper times they should not be made at all, because they are a waste of time. The burden of roguing and maintaining acceptable dahlia plantings must be the responsibility of the grower and not the inspection department. The grower must educate himself to recognize the diseases and eradicate them. The function of the inspection and certification service is regulatory only; inspectors should not be required to rogue plantings. With the responsibility for acceptable plantings resting entirely with the grower, present staffs of inspectors may be better able to inspect plantings at the proper times.

Urgent Need for Research

There is an urgent need of a rapid test for the presence of dahlia viruses, such as the color or serological tests previously described. An attempt should be made to develop these methods for use here as soon as possible. A rapid test such as the serological test would perhaps enable the growers to check their roots during the winter months and choose clean stock for propagating purposes. It is conceivable also that such tests could be of value to inspection and certification services. This is now apparently being done in some countries (see above). When the dahlias from these sources become available to consumers in this country, we can expect a sharp reduction in the "tolerance" or amount of disease now allowable in dahlia plantings here. This can happen rapidly once these sources are well established. Those growers that have the foresight and ability to meet



The Principal Scourge of Dahlia Gardens

Figure 1. Dahlia Mosaic Virus infection is identified by vein banding in a mosaic pattern. Narrow "bands" of yellow or pale green colors are parallel to mid-ribs and/or side (branch) veins. Extent varies. One side of leaf may be longer than the other. Leaves may be wrinkled or blistered in appearance, and/or curl downwards.

these disease problems and deal effectively with them will be the growers of tomorrow. Others will be eliminated by competition.

Summary

Virus diseases are prevalent on dahlias throughout the world. Masking of diseased plants and confusion with
(Continued on following page)

Virus Diseases of the Dahlia (Cont'd)

nutrient deficiency symptoms adds to the problem. Roguing of obviously diseased plants probably will not eliminate the virus from propagating stocks. The viruses presently known to attack the dahlia are dahlia mosaic, dahlia ringspot, yellow ringspot, oakleaf, cucumber mosaic and tomato spotted wilt. European researchers have developed means of producing virus free stocks and commercial growers there are using them. Such stock probably is superior to any available in the United States. Unfortunately, some of the literature published for amateur consumption has been misguided and may have misled many people, including some commercial growers.

Literature Cited

1. Baker, K. F. Dept. of Plant Pathology, 405 Hilgarde Ave., Univ. of Calif. Agr. Exp. Sta., Los Angeles 24, California. Personal communications. 1957.
2. Berninger, L. M. and G. E. Beck. "Enjoy Dahlias." Univ. of Wisconsin Ext. Serv. College of Agr. Circular 544. 1957.
3. Bouriquet, G. "The Diseases of Cultivated Plants in Madagascar." *Encycl. Mycol.* 1946.
4. Boyer, C. A. Bureau of Plant Industry, Dept. of Agr. State of Michigan. Personal communication. 1957.
5. Brierly, P. "Studies on Mosaic and Related Diseases of the Dahlia." *Contr. Boyce-Thomp. Inst.* 5:235-288. 1933 also A.D.S. Bulletin July, 1933.
6. Brierly, P. "Value of Index Plants for Detecting Dahlia Viruses." *Pl. Dis. Rept.* 35: 405-507. 1951.
7. Brierly, P. and F. F. Smith. "Some Vectors, Hosts and Properties of Dahlia Mosaic Virus." *Pl. Dis. Repr.* 34: 363-370. 1950.
8. Connors, C. H. "Runtling of Dahlias." *New Jersey Dahlia News.* 2: 10-11. 1926.
9. Cornuet, P.; C. Martin and P. Limasset. "Extraction du virus de la Mosaïque de Dahlia." *Compt Rend. Acad. Sci.* 231: 913-914. 1950.
10. Anon. "Plant Diseases in Denmark 1946." Annual Survey of data collected by the state phytopathological experiment station. *Tidsskr. Plan-teavl.* 52, 2, 1948.
11. Gillman, H. "Report of the Acting Director of Agriculture." *Rep. Dept. Agric. Nyasald* 1950, 1952.
12. Goldstein, B. "The X Bodies in the Cells of Dahlia Plants Affected with Mosaic Disease and Dwarf." *Bull. Torr. Bot. Club* 54: 285-294. 1927.
13. Hanna, M. and H. Martin. Plant Inspection Service, Bureau of Plant Industry, Dept. of Agr., State of Michigan. Personal communication, 1957.
14. Heinz, K. "Virus Transmission Experiments with Aphids on Dahlias, Cucumbers, Onions, Turnips and Some Other Plants." *Z. Pfl. Krankh.* 59: 1-13. 1952.
15. Anon. "Some Diseases and Pests of Cultivated Crops in 1950 and Their Control." *Versl. Pl. Ziekt. Dienst Wageningen* 118: 120. 1951.
16. Holmes, F. O. "Elimination of Spotted Wilt from Dahlias by the Propagation of Tip Cuttings." *Phytopathology.* 45: 224-226. 1955.
17. Limasset, M. P. "Les Maladies a Virus du Dahlia." *Jard. de France* 8:33-43. 1954.
18. Lovitt, D. F. Bureau of Plant Industry, Dept. of Agr., State of Michigan. Personal communication. 1957.
19. Marini, E. "Report on Virus Diseases of Dahlia in Propagating Stocks in Italy." *Notiz. Malatt. Pi-ante*, 1951. 17:13-16. 1951.
20. Marini, E. "Organization and Research for the Control of the Production of Seed Potatoes in France." *Ann. Sper. Agr., (N.S.).* 7: 11-15. 1953.
21. Martin, C. "Research on Virus Diseases of the Dahlia." *Ann. Inst. Rech. Agron. Ser. C. (Ann Ephyt).* 5: 63-78. 1954.
22. McWhorter, F. P. Dept. of Botany and Plant Pathology, Oregon State Col. Corvallis, Ore. Personal communication. 1957.
23. Miller, A. S. "A Preliminary Survey of Plant Diseases." *Pl. Dis. Repr.* 34: 161. 1950.
24. Nelson, R. Michigan State University. Agr. Exp. Sta. Special Bulletin "Dahlias: Their History, Classification, Culture, Insects and Diseases." 266: 82. 1935.
25. Norton, J.B.S. "Dahlia Troubles and Diseases." *Amer. Flor.* 47: 387-388. 1916.

(Continued on opposite page)

1959 Annual Eastern Exhibition

September 23rd and 24th are the dates. The Garden State Plaza, Paramus, New Jersey is the location where the Dahlia Society of New Jersey, as host society, co-operates with the American Dahlia Society to stage the 45th annual Metropolitan Area dahlia exhibition and competition. This will be the 45th annual exhibition of the American Dahlia Society and the 37th annual of the Dahlia Society of New Jersey, and from every indication it should be one of the finest yet. Weather conditions for bloom production have been ideal with a corresponding degree of enthusiasm among our members and exhibitors.

The location for this exhibition at the junction of the main U. S. and New Jersey State highways and Parkways leading from Westchester, Long Island, New England and Philadelphia make it easy to reach. The exhibition hall is located near the center of the immense Garden State Plaza, with unlimited and free parking adjacent to the display. And as for our wives, we commend their inspection of the many and varied interesting shops and stores surrounding the exhibition hall on Dogwood Lane.

The 1959 Show Schedule follows in general the 1958 Schedule so carefully constructed by Dr. Preas. There being no airport in close proximity, we have

eliminated the section previously given to shipments via air express. However, should any such make their appearance they will be properly staged and given due recognition. We have as usual the American Home Achievement Medal, the Leonard Barron Memorial Award, and the A. D. S. Trophy in the small classes for undisseminated dahlias, plus the A. D. S. Seedling Sweepstakes Awards for recognition of new varieties of special merit. We have this year two new awards from our English friends in addition to the Silver-Bronze Medallion of AMATEUR GARDENING of London. Through the generosity of The Midlands Dahlia Society we are privileged to offer their plaques in two classes: to the largest and most perfect "A" in Section C, Classes 131 through 134; and to the smallest and most perfect in Section D, Class D-48-A. Another new class which we believe will create much interest is for a variety or varieties growing in our Trial Gardens in 1959 and grown for or by the originator. The award in this class is a trophy by the President of the Dahlia Society of New Jersey to the highest scored winning entry. An added inducement to those entering the Artistic Arrangements and Compositions will be the trophy of the Garden State Plaza Corporation for the best in the section.

For exhibitors and friends staying over night we suggest reservations at the Arcola Motor Lodge, located within easy walking distance of the exhibition hall. The American and New Jersey Dahlia Societies will locate headquarters there. It is located on N. J. Route 4 and is 8 miles from New York City—and for reservations write the Arcola Motor

(Continued on following page)

26. Roland, G. "Les Virus des taches bronzées de la tomate (*Lycopersicon* virus 3, Brittlebank) et la mosaïque du concombre (*cucumis* virus Doolittle) sur dahlia." *Parasitica*. 4: 98-102. 1948.
27. Anon. **Fruit Grower**. 1952. 2950: 69. 1952.
28. Smith, K. M. "Thrips tabaci Lind, as a Vector of Plant Diseases." *Nature*. 127: 852-853. 1931.
29. Smith, K. M. **Recent Advances in the Study of Plant Viruses**. Blakiston Co. 1934.
30. Smith, K. M. "Dahlia Diseases and the Problem of Virus Infection." *Gardn. Chron.* 118: 140-141. 1945.
31. Smith, K. M. **Textbook of Plant Virus Diseases**. Ed. 2. Little, Brown & Co., Boston. 1957.
32. White, R. P. "Dahlia Diseases." *New Jersey Agr. Exp. Sta. Circ.* 361. 1935.
33. Wilson, R. D. "Dahlia Stunt." *Agric. Gaz.* New South Wales. 62: 241-246. 1951.



September Scenes Like This in 100 Shows

This was a section of the Open-to-All Class in the A. D. S.—N. J. Show at the Newark Airport in 1958. It was taken as a color slide and made into a Black and White print, so it loses some detail, but the scene will be repeated at least 100 times this fall all over America. (Photo, Dudley)

Lodge, Route 4, Paramus, N. J. Plenty of space will be available to us. Until 1957 staging of the exhibition and parking facilities in New York City were only adversely equalled by the attendance, or lack of same.

In 1957 and 1958 through the cooperation of the Port of New York Authority at the Newark Airport these difficulties were largely overcome, especially from the attendance angle, which in the two years at Newark possibly equalled the attendance during the previous 42 years of exhibiting. This year with the outstanding cooperation of the Garden State Plaza Corporation we should make further progress in every direction. The opportunity will be there, it is for the exhibitors to make the most of it, thereby expressing their confidence in the dahlia, in their Show Committee and officers, and their appreciation to the Garden State Plaza Corporation for the opportunity presented.

Clerks Wanted for this Show

Charles H. Stoeckel, Chairman of Clerks for this Joint show adds: "This promises to be a very big show with

more blooms and filled classes than any show in many years. Therefore we will have many judges and will need a lot of clerks. If you have an ambition to some day judge a big show like this one, the best way to get started is to be a clerk. You pick up a great many judging points and can learn to evaluate the blooms better while clerking with experienced judges."

If you want to help clerk, please drop a Postal Card to Charles Stoeckel, 511 Park Ave., Paterson, N. J. Do it NOW, please.

—Anthony Pietruszkiewicz, President,
The Dahlia Society of N. J. and
Chairman, Joint Show Committee

St. Peter: "Here's your golden harp." Newly arrived Dahlia Grower: "How much is the first payment?" St. Peter: "It's a new golden Dahlia Introduction, selling at only \$25.00. Like the last one you perpetrated on the public."

Four Dahlia Pioneers Pass On

J. Lewis Roberts

Died July 17th

(See Picture on Front Cover)

By Lynn B. Dudley

J. Louis Roberts, author, dahlia originator, judge and for 19 years writer of the Mid-West Flower Grower National Honor Roll, died July 17th, at the Presbyterian-St. Lukes Hospital, Chicago, Ill., at the age of 71 years.

Funeral services were held at the Funeral Chapel, 304 W. 119th St., Monday, July 20th and were attended by hundreds of his dahlia friends and relatives. At the time of his death he was Comptroller of Blair Fashions, Inc., manufacturers of women's foundation garments.

His lifelong hobby and avocation for the past 43 years was growing dahlias. In 1933 he wrote the book, "Modern Dahlias," published by Doubleday-Doran and edited by the late Leonard Barron, then Horticulture Editor of the Flower Grower. The book was designed as a simple, understandable treatise on growing and exhibiting dahlias and helped a lot of people to grow and show better dahlias.

He was editor of "The Dahlia," the publication of the Central States Dahlia Society, after it was formed just prior to World's Fair, in 1933. He also served two terms as president of that society and later was one of the moving spirits and founders of the Southtown Dahlia Society. He was president of this society also, and for the past several years has published, at his own expense, a special Dahlia Classified List, which he characterized as, "A Supplemental List to the 19— Combined Classification List of the A. D. S. and the C. S. D. S." It contained many of the older dahlias which had been deleted from the Joint List, but which J. Louis thought were still worthy of being shown and which he observed at the shows. It also contained the Roster and Schedule of the Southtown Society.

J. Louis has been a Vice-President of the A. D. S. for the past 35 years and has been one of the A. D. S. original members of the Joint Classification Committee. He was always sought as a

(Continued on following page)

Frank Eyer

Died July 11th

By Robert P. Connal

Frank Eyer, 100 Dunsmeere Drive, Rochester, N. Y., known to many New York State dahlia growers, and members of Eastern coastal societies, departed this life in St. Mary's Hospital, Rochester, N. Y., Saturday night, July eleventh. Thus for the second time a Rochester Society member's name is erased by death from the list of A. D. S. vice-presidents, Merrill Brown having been the first. Frank was a member of the National Capital Dahlia Society, likewise the Southern Tier Society. He became a member of the Rochester Dahlia Society in the late thirties, served two terms as its president, and as Show chairman on three occasions. He possessed an excellent dahlia memory, useful in his judging, and otherwise. As an exhibitor, in whatever divisions he elected to enter, he "played" to win, and proved a tough competitor. He was an enthusiastic dahlia man, generous of his time with beginners.

Frank's love of flowers began many years ago, initially the Spring varieties, followed by roses, later to indulge in

(Continued on following page)



Frank Eyer, Rochester. Died July 11.

J. Louis Roberts (Cont'd)

judge at the fall shows and for many years never missed an A. D. S. or Midwest show. He was an indefatigable worker to improve dahlia understanding and dahlia standards among the societies.

As a dahlia originator he seemed to always be introducing a new and worthwhile variety. Among the better known Roberts' originations were: Fashion Hour; Mrs. Rufas Dawes; Kay-Kay; Dr. Wun; So-Big; Big Mo; Charles Ondrick and Sophia R.

He had lived in Chicago all his life and for some 40 years at his present home, 12147 Harvard Ave. He is survived by his widow Sophia, well known too, and liked by, dahlia people from north to south, as she usually accompanied J. Louis to the Dahlia Shows. Also surviving are a daughter, Mrs. Dorothy Sharp and a son Evan, as well as two sisters and seven grandchildren.

Lou was our good friend and Honor Roll associate for over three decades. We always kidded each other and others too, whom we, at times, feared took themselves too seriously. Together, we placed the first blue dahlia ever seen on any show table at an A. D. S. show at the then Pennsylvania Hotel (now the Statler). It was a Frau Bracht, a pale yellow cactus, but with florist's blue dusting powder, we made it into a beautiful deep blue cactus. And it was the sensation of the show, too. During the nearly 20 years of selecting the best of the new dahlia varieties sent to us from all over the world, we had differences of opinion, but never a serious argument. We usually arrived at the same result in making our choices. Once or twice we did not list his seedlings, but that never interfered with our friendship. He was a dahlia perfectionist and always tried to improve dahlia culture methods and dahlia society relationships too.

J. Louis Roberts will not only be greatly missed, but his place will not soon be filled. His stature will increase with the years. A suitable Dahlia Award should commemorate his memory.

From Conrad Foust — About Roberts

On the passing of J. Louis Roberts, July 16th, 1959. The Dahlia world has lost one of the pioneers. He was a fine showman and has introduced many new varieties. He was National Honor Roll

Judge for the mid-west for many years and was known nationally and internationally as one of the outstanding Dahlia Judges. It was my privilege of being associated with J. Louis Roberts for more than ten years, representing the South in the National Honor Roll Judging. During that period of time I found he was an outstanding Judge, always fair and honest in his decisions. His name to all of us will always be synonymous with the Dahlia.

Frank Eyer (Cont'd)

gladiolus. Having purchased the lot adjacent to his home, he had ample space. As his interest in Dahlias grew, over the last twenty years, said lot was gradually given over entirely to dahlias; likewise half his own back yard, and the entire eastern side beyond the driveway, making room for several hundred hills. During the last three years he had conducted a semi-commercial business, with his retirement date approaching. He was an avid bowler in a Kodak league, and this, plus his dahlia clumps, filled his spare time during the winter.

Years ago Frank left the mercantile field, and went to work at Kodak Park. He retired from his work in the emulsion and coating division last March 1st, having turned 65. He had lived alone in the family home since his wife passed away three years or so, ago. Offspring are two married daughters and three grandchildren.

Frank was a member of Zetland Lodge 951 F. & A. M., and a Masonic service was conducted at the Farrell Brothers Funeral Home the evening before interment.

Mrs. Celia Tulley, Cor. Secy. Adds:

Frank Eyer's loss will be felt by all members of the Rochester Dahlia Society, and by many others in many societies. He gave so generously of his time, labor and money that he will be impossible to replace. His death will be a great loss to the whole dahlia world.

Surviving are his two daughters, Mrs. Carl Ballinger, 336 Lone Oak Ave., Rochester and Mrs. Robert A. Thompson, 94 Stonecliffe Dr., Rochester. We are reminded of the lines from 'The Divine Strategy' by Edward Markham:

(Continued on opposite page)

"No soul can be forever banned
Eternally bereft—
Whoever falls from God's right hand
Is caught into his left."

Mrs. Celia Tulley,
985 South Ave., Rochester, N. Y.

Editor's Note: This is indeed sad news. We know of no one who was held in greater esteem and respect among his host of business and dahlia friends than Frank Eyer. Not only was he a stalwart worker in the Rochester Society, but was also a worker and showman in Elmira, Washington and New York. He had been a Vice-President of the A. D. S. for many years. We received a phone call from George Brunjes, Elmira, and letters from Bob Connal, Rochester and others telling us of this great loss to Dahliadom.

Edward E. Montgomery Died April 14, 1959

By Conrad Faust

The many friends of Edward E. Montgomery were saddened to learn that he passed away April 14, 1959, after a long illness. He had been associated with dahlia growing for many years. Was in charge of the Official A. D. S. Dahlia Trial Garden located in Atlanta for many years. He was a Past President of the Dahlia Society of Georgia. He had many friends from all sections of the country. Mr. Montgomery will be indeed missed by his many dahlia friends.

Raymond Grass, A.D.S. Vice Pres.

By L. C. "Pat" Bennett

You have had some of the particulars from Mrs. Faerber, about the passing of our good friend and a stalwart working member of the A. D. S. Official Family for so many years, Raymond Grass.

But there are a few facts which should be added. He was a Charter member and Past President of the St. Louis Dahlia Society and, as you know a Vice-President of the A. D. S. for many years. For many years Ray never missed attending the A. D. S. Shows and frequently took in the Mid-West, Baltimore, Washington and other shows, as well.

He has told me many times about the fun he used to have going to help you

(Lynn), judge some of these shows, when he was able to combine his business (Fur) trips with the Fall shows. Ray used to love to tell those "tall" stories like when he "fertilized each hill of his dahlias with fur cuttings and found that the dahlia leaves developed such luxuriant coats of fur that no insect could ever suck its juice."

But we all loved that man. And many outside our bailiwick will miss that great dahlia grower and story teller, Raymond Grass. He died as we all would like to, in his dahlia garden, with his wife's arms to cradle him in his last moments.

Editor's Note: Mrs. Bruno Faerber's tribute to Ray Grass will be found in the Report of this New A. D. S. Participating Society, in the Society Section.

Dahlia Registration

By R. E. Harter, 2769 Danville Highway, Alamo, Calif. the following dahlias:

DR. ZHIVAGO, A, Straight Cactus,
Dark Red

STANFORD, B, Informal Decorative,
Bicolor Cardinal Red, tipped
White

\$1.00 Fees paid.

Charles H. Connors, Chairman
A. D. S. Nomenclature Com.

A.D.S. Membership Upswing

According to our Treasurer, Harry Dreyer, the report is that membership in the American Dahlia Society is on the increase. Since the first of the year, we have had three participating Societies and one affiliate join. Other new members joining, average approximately 20 each month. Our advertisers should be very pleased to read this as it means more and more growers are being reached by the Bulletin. A steady monthly increase of new members is a healthy sign for any Society. We certainly are pleased with it.

VISIT

The Combined A. D. S. and N. J. Show
Garden State Plaza, Paramus, N. J.
September 23-24, 1959

A.D.S. Executive Committee Adopts 6 to 9 Inch Size for B's

In the May and August 1958, and February, 1959 issues of this Bulletin opinions were asked and votes of many members were published relative to the advisability of extending the size of the B-size dahlias to nine inches maximum. At present, the B-size is limited on show tables to over 6 inches, and up to 8 inches.

In this round robin, the majority of the opinions were for this change, namely, to change the size of B's to "over 6 inches up to 9 inches." Some also voted, but they were in the minority, to split the "A" size into "A"—9 to 11 inches, and "AA"—over 11 inches.

At its July 17th meeting, the Executive Committee based on these expressed opinions, voted unanimously except for one dissenting vote, to adopt this new "B" size, over 6 inches, and up to 9 inches for its show in 1960. It was considered too late to make the change for this year's exhibition.

Will Be Tried in 1960 A.D.S. Show, First

This innovation will thus be tried out in the A. D. S. show before the Committee recommends that the "B" size be changed or extended to entries at its Official Trial Gardens, or direction be given to its members of the Joint Classification Committee to list in the "B" size category all of the "B's" measuring "Over 6 inches and up to 9 inches." But if this change in its show schedule works to the advantage of many of the in-between 8 to 9 inch dahlias, which now have to compete with the Mammoth 12 to 14 inch "As," then the Committee has gone on record that these further steps will be taken.

The committee would be glad to receive, through the Bulletin Editor, or direct to President Pitt, and other officers, any comment, either for or against this step. Progress is never made by waiting to see what someone else might do. And the A. D. S. has always been for Dahlia Progress when it will benefit the majority. At the same time it recognizes that some just naturally resist any changes, "for better or for worse," as the bride tearfully agreed to "accept" him.

Four Societies Join A. D. S.

Mrs. Caroline P. Mayer, Assistant Secretary of A. D. S., in charge of Participating and Affiliated Society relations, advises that four Dahlia Societies have joined with the A. D. S. since the May issue.

She writes: "Welcome to the new Affiliated and Participating Members who have recently joined the A. D. S. The folders and literature to which each society is entitled have been mailed. Each new member of the Participating Societies will receive Bulletins regularly beginning with this issue. Each Society will receive the A. D. S. Medal to award at their show; each has been advised by Andrew Mulcahy, chairman of the A. D. S. Seedling Sweepstakes Awards that they are entitled to include these awards in their schedule if there is time, for 1959. Following are the society additions to the A. D. S. Family."

Tri-Town Men's Garden Club, Michigan, Affiliated Member; Vincent Stitz, 10080 Reek Road, Allen Park, Mich.

Hagerstown Dahlia Society, Maryland, Participating Member; President, G. A. Eherly, R. D. #1, Waynesboro, Pa.

Greater St. Louis Dahlia Society, Missouri, Participating Member; President, Wm. Knetzer, 238 Bender Ave., East Alton, Ill.

Dahlia Society of California, San Francisco; President, Dirk C. Schroeder, 547 Runnymede, Palo Alto, Calif.

Mrs. Meyer adds: "Please make a correction: President of the Long Island Dahlia Society should have been listed in the roster of societies in May issue, as Lawrence Palmenteri, 85-38 105th St., Richmond Hill, N. Y. I gave you name of Joseph Mugno, which was incorrect."

The Indianapolis Dahlia Society, an Affiliated A. D. S. Society, did not send the list of their officers in time for the May Bulletin. Its President is William Carroll, 1143 No. Warman, Indianapolis. This society is sending N. R. Hem-

hill, of Monitcello, Ind., as a delegate to the A. D. S. Show on Sept. 23 and 24, at Garden State Plaza, Paramus, N. J. As an alternate, Richard Dunwoody will attend if Mr. Hemphill is unable to do so. We are very happy that Indianapolis is taking this step to link their society closer to the A. D. S. May the day come when all Affiliated and Participating Societies will each send representatives to the A. D. S. Show and to its Annual Meeting in January, also. It is only by visits between members of other societies and the A. D. S. that we can really know and understand each others problems and aims. In the past most of the "visiting" has been done by members of the A. D. S."—Caroline P. Meyer.

Southern States Dahlia A'ss'n. Show

Dahlia Society of Georgia Silver Anniversary

October 3-4, the Dahlia Society of Georgia will be host to Southern State Dahlia Association for its Silver Anniversary Show at the Southeastern Fair.

The Dahlia Society of Georgia welcomes the opportunity to entertain the Southern State Dahlia Association on its Twenty-fifth Silver Anniversary and we extend invitation to all dahlia growers in other sections of the country to join us on this occasion.

To carry out the theme of Silver Anniversary, all prizes to be awarded will be of silver.

Southern Hospitality will be item number one for visitors. Friday night—Mr. and Mrs. C. E. Faust will entertain for out of town visitors. Saturday the Judges will be guests for a luncheon, Saturday night will be our banquet at Dinkler Plaza Hotel. Sunday noon there will be a Southern Barbeque at the Country Home of the President, Mr. David Sullivan.

Southern State Dahlia Association Medal will be awarded this year for the first time. There are three medals available to exchange with other Dahlia Associations each year.

Visitors will see the Official Trial Gardens, some thirty-six entries have been planted.

We hope you will pay us a visit this year. If you want hotel reservations, write to: Dr. A. L. Stephens, 1260 Brookforest Drive, N.E., Atlanta 5, Georgia. Conrad E. Faust.

Come to Vineland!

We are still growing Dahlias and Chrysanthemums after nearly 50 years of business and have just about the finest assortment grown anywhere. We will have for 1960 a fine array of Introductions and oodles of \$1.00 Specials in many types and sizes, priced this way to bring the Dahlia into more back yards and out of the luxury class.

Visit us at Dahliadel

Although we think each year of cutting down a bit we have 20 acres of Dahlias and Chrysanthemums and many friends and customers enjoy riding through the fields in late September and October when they are in full bloom to see the array of colors and types. We are located on East Landis Avenue, 1 mile east of Main Road (N. J. 555).

Dahliadel Recommended Insect Control

must be effective as we are selling more each season and use it in our fields. See our Cultural Instructions and Dahlia Growers Supplies in our Catalog.

Carl Endlein Double Cutter Shear

A precision made shear of fine quality. Why pay more? \$4.00 Postpaid

Catalog on request if not already on our list.

Dahliadel — 14
WARREN W. MAYTROT
Vineland, N. J.

A. D. S. Seedling Sweepstakes, 1959

The following Participating Affiliated Societies' applications to include this award in their 1959 Show have been received and approved:

A. D. S. and N. J. Combined Show
 Dahlia Society of Alabama
 Baltimore Dahlia Society
 Central Valley Dahlia Society
 Greater Phila. Dahlia Society
 Kentucky Dahlia Society
 Michigan Dahlia Society
 Minnesota Dahlia Society
 National Capital Dahlia Society
 Southern Tier Dahlia Society
 Dahlia Society of Tennessee
 Virginia Dahlia Society
 Dahlia Society of Wisconsin
 Badger State Dahlia Society
 Bergen County Dahlia Society
 Burholme Horticultural Society
 East Liverpool Dahlia Society
 Irvington Dahlia Club
 Kitsap County Dahlia Club
 L. I. Dahlia Society
 Mid-America Dahlia Society
 Ohio Valley Dahlia Assn.
 The Portland Dahlia Society
 Rochester Dahlia Society
 San Diego Dahlia Society
 San Leandro Dahlia Society
 Snohomish County Rose & Dahlia Society
 Southtown Dahlia Society
 Washington State Dahlia Society
 Inglewood Dahlia Society
 Southeastern Michigan Dahlia Society
 Seattle Dahlia Society

Fresno Dahlia Society
 Scioto Valley Dahlia Society
 East Bay Dahlia Society
 Hagerstown Dahlia Society
 Dahlia Society of Ohio
 Dahlia Society of Georgia
 Orange County Dahlia Society
 (Calif.)

Central States Dahlia Society

The scores of the Judges for this award in these shows must be forwarded within five days of the Show date to the Chairman of this Committee and, to assist said Committee, the name of the variety, together with the size, class, color, etc. must appear on the score sheet of each Judge.

The addition of each Judge should be checked as experience has proven that errors do occur and at times cause serious embarrassment.

Due to the large number of Societies whose Shows have a class for these A. D. S. Sweepstakes, in order that the winning varieties receive their due credit, we respectfully suggest that each Show Manager make certain that the Judges scores are promptly forwarded within five days of the Show Date to the Chairman of this Committee. If there should not be any awards, such a report should also be forwarded within the five day period.

Your co-operation will be deeply appreciated.—Andrew J. Mulcahy, Chairman, 20 Marshall Ave., Floral Park, N. Y.

In Between Shows Visit Parrella's Garden

Here you will see not only the Wonderful New Varieties We will Offer for First Time for 1960 Season, BUT—

Some 400 Standard Varieties in Every Form Type and Color Class.

WE'VE GOT 'EM — COME SEE!

Parrella Dahlia Gardens

3380 Ely Ave., New York 69, Bronx, N. Y.

Dahlia Root Bargain! something you can't use at a price you can't resist.

A dahlia man met a friend in a psychiatrist's office and asked, "You coming or going?" "If I knew that," the dahlia grower replied, "I wouldn't be here."

Many New Varieties Now on Test at A. D. S. Trial Gardens

By Henry Olsen, Chairman T. G. Committee

This should be a good year for New Introductions, if the glowing reports from the Superintendents of the Official and Unofficial A.D.S. Trial Gardens are any indication.

The combined report for the eight gardens show that there is a total of nearly 400 varieties on Test. The eight gardens give a total of 380. In 1958 the total varieties on test in all gardens was less than 300.

Broken down into individual Test Gardens, the figures are as follows:

Official A.D.S. Trial Gardens

Southern Trial Gardens, at Atlanta, Ga., report a total of 36 new seedling varieties.

Eastern Trial Garden, located at the L. I. Agricultural & Technical Institute, has a total of 66 varieties on test.

Pacific Coast Trial Garden, at Lakeside Park, Oakland, Calif., has 77 on test.

Pacific Northwest Trial Garden, at Point Defiance Park, Tacoma, Wash., has a total of 37 varieties on test.

Mid-West Trial Gardens, at Michigan State University, East Lansing, Mich., has a total of 65 seedlings on test.

Ohio Valley Trial Garden, located in Ault Park, Cincinnati, Ohio, reports a total of 29 varieties on test.

Unofficial A.D.S. Trial Gardens

(Note—Each Test Garden is required to have a two-year unofficial status to become familiar with the standards of culture and judging set by the A.D.S., so that operations and conduct of the Trial Gardens can be uniform and completely fair, in the interests of the originators of the New Varieties. After these two years, if the requirements have met satisfactorily, the garden is made an Official A. D. S. Trial Garden.)

North Central Trial Garden, at Minneapolis, located on the grounds of and supervised by the Agricultural Personnel of University of Minnesota, reports a total of 54 varieties on test.

Badger State Trial Gardens, located in Olbrich Park, and supervised by the

Park personnel, Madison, Wis., reports a total of 26 varieties on test.

Names Required Before Variety Is Certified

It is most essential that each new variety have a name, and no variety will be certified until this is done. Without a name, (and most seedlings are now sent to the gardens under a number,) all of the publicity value necessary to introduction is lost.

Every originator who now has seedlings on test at any A.D.S. Trial Garden should select a name, even a tentative name, and send it at once to the Superintendent of each Trial Garden. When sending name in, be sure you identify it with the number under which it was originally entered.

This action enables the superintendent to forward the name with the T.G. Report and score, with descrip-

The Dahlia Growers Philosopher says: "Things change so fast these days that a man can't be wrong all the time."

tion of the variety, when it is determined that same will have an average, all-season score, of 85 points or over. If your variety does not obtain a score of 85 or over, the name and score, will not be included in the report.

As you know, the Consolidated Trial Garden Report, including all the names and descriptions of the dahlias which are eligible for Certificates of Merit, are published in the November issue of this Bulletin. BUT, no name—no listing—that's the rule. And if the name has not been given to your dahlia by the time the report comes to the Editor for publication, publicity for your new dahlia is lost for one year, at least. (Heretofore the Editor has had to send out Air-Mails and wires at last minute to try to help originators get their dahlia "Hopefuls" in the list. That will not be done, this year. Send names NOW to the Trial Garden Superintendents, please.

"WEST COAST NEWS"

By Dr. J. R. Brandon, Jr., 3437 Gravenstein Hwy., So., Sebastopol, Cal.



Dr. Julian R. Brandon
A.D.S. Pacific Coast Editor

East Bay Dahlia Society

The first show of the new East Bay Dahlia Society, of Oakland, Calif. will be held at the new Garden Center, in Lakeside Park. At the same time the new garden center will be dedicated. Representatives will be on hand to greet visitors and to take them through the A. D. S. Official Trial Gardens and the Display Gardens.

The date of the show, August 22nd and 23rd, ties in nicely with the San Leandro and San Francisco shows, all shows coming within the period of about a week. This will enable many dahlia growers on the West Coast to combine their vacations with a "Dahlia Show

Tour" and see some of the best blooms on this coast.

"HALL OF FLOWERS NOW REALITY"

In due time all dust settles. If we have enough patience things seem to work out in the way that is best for all. So with San Francisco's long talked of Hall of Flowers.

In California, the state's tax on legalized pari-mutuel horse race betting runs into the millions of dollars. Parts of this go to hospitals, medical research and other worthy causes. The various 56 or so counties receive up to as much as \$65,000.00 yearly for their county fairs.

The San Francisco Flower Show IS San Francisco's county fair. This show is participated in by sixteen societies including the Dahlia Society of California. Through the co-operation of these societies and the excellent management of Glenn Mack, who managed the show for many years and of Walter F. Gibson, present Show Manager, the S. F. Flower Show, Inc. has managed to stage one of America's most beautiful shows, using only \$7,500.00 each year in awarding cash prizes to all winners in all sections and classes.

The remaining part of the yearly \$65,000.00 has accumulated until it now amounts to something in the neighborhood of a half million dollars. Some years back it was decided that this was to be spent for a Hall of Flowers to house a large and a small exhibition hall and suitable meeting rooms for the various societies.

Now a half million big round silver dollars can attract covetous eyes. One group wanted to divert this money towards a fund for the restoration of the Palace of Fine Arts, built for San Francisco's big 1915 world's fair. One of the world's most beautiful buildings, the Palace of Fine Arts was in a sad state of disrepair. But if repaired (or rebuilt) it would provide a magnificent exhibition hall.

The politicians even began to figure on ways in which they might divert this money back into the general fund, thus reducing taxes. One self-appointed committee to "save the park" (from what?)

JAS - MAR DAHLIA GARDENS

Largest Specialist-Gardens West of the Mississippi.

New Czechoslovakian and Australian Imports.

Visit our Gardens this Summer and Fall — and Write for Fall Catalogue.

110 S. E. - 139th St.

AL 3-2638

PORTLAND, OREGON

objected violently to the Hall of Flowers being built in Golden Gate Park, although the park did not seem to have been terribly injured by its Museum, Planetarium, Aquarium, Academy of Science Building, ball parks, football fields, trotting track, etc. and a dozen more etc.

Sol Martin, then President of the D.S. of California, Glenn Mack and many others fought a last-ditch battle to see that this money was spent for nothing else but a Hall of Flowers and that it be built in Golden Gate Park. (Where else should a Hall of Flowers be? At the garbage dumps yet?)

SO . . . wot happened? The contract for construction of the Hall of Flowers has been signed and work on it will probably have started before you read these lines. It will be on its ORIGINALLY PLANNED SITE in Golden Gate Park. The flower societies will have what they want. The "Save The Park" ladies have probably found something else to "save."

The Palace of Fine Arts Building? Well, San Francisco has many millionaires no one has ever heard of. One of these just casually tossed in two million dollars towards the 3 or 3½ million necessary to rejuvenate the Palace and the balance is assured from other sources. So everyone is happy except the politicians.

IF there is a moral to this story, it might be, "Quit shoving, brother, be sure you're right, say a little prayer, get out of the driver's seat and what's best for all usually happens."

SAN LEANDRO SPEEDS UP

With the starting of construction of Oakland's new Garden Center some few months back, a considerable number of Oakland members of the San Leandro Dahlia Society left the latter society to form the East Bay Dahlia Society.

This might have proven quite a setback to any other society than the San Leandro Society. However, the S. L. Society has been one of the West Coast's most progressive and successful societies for many long years and holds each year what we have always considered to be one of the West's most beautiful shows.

Under the leadership of President Eleanor Bolesworth, formerly Secretary of the society for many years, Caroline Rafferty, the present Secretary, Jim Rafferty, and its many other enthusiastic

members, the society has been enrolling many new members and expects to put on a better than ever show this year.

READ THE LABELS, FRIEND!

At a recent dahlia society meeting we heard a number of the members comment on the fact that in applying a well-known brand of fertilizer which comes in pellet form, the pellets did not seem to dissolve and could be seen on the ground for many days after its application.

Through habit, we merely glance hastily, if at all, at the labels on insecticides and fertilizers. Often we do not even glance. And we rarely read the pamphlets which usually accompany these products.

Pelleted fertilizer is ESPECIALLY DESIGNED to dissolve very, very slowly. That is one of the things which makes it better than powdered fertilizer. Danger of "burn" is practically eliminated and the plants get a steady daily feeding rather than a big "shot" all at one time.

And if you can see the pellets for a number of days you are not using it properly. Ground should be well soaked a half day to a day before applying. Pellets should then be well worked into the SURFACE, but NOT deeply. Ground should be thoroughly watered immediately after application.

DANGER OF FLAT STATEMENTS

Some few years back a new member of our society, growing dahlias his first year, asked me to look at his plants and see if I could tell him what was wrong with them.

At a time when his plants should have
(Continued on following page)

NEW DAHLIAS for 1960

See Them at the Shows

Very Interesting

Most Promising

Potential Champions

PENNYPACK

Stanley Johnson

Cheltenham, Pa.

West Coast News (Cont'd)

been 80% grown they were only sickly, scrawny weaklings about 16 or 17 inches tall.

Questioning brought forth the following story. He had much of potash fed dahlias. He had heard that in addition to other things, potash was of the greatest value in producing good strong, healthy roots that would keep well in storage.

He had been warned against nitrogen. Nitrogen would give him soft roots that would not last the winter. Nitrogen would give him weak stems, open centers and soft blooms. Nitrogen would give him too much plant growth and not enough bloom growth, etc., etc. So he carefully avoided the adding of ANY nitrogen.

If his place had fairly normal or average soil to begin with, this would not have been too disastrous. But his garden was mainly "fill" covered with a very few inches of good top soil. Nitrogen is the least stable of the necessary plant foods. A winter of heavy rains had leached the top soil nitrogen down through the porous fill until his nitrogen was almost nil.

Nitrogen is vitally necessary to plant growth. Without nitrogen, life would soon disappear from this earth.

When Joe Doakes, whose soil is blessed by nature with ample nitrogen, and who is ADDING NITROGEN in the form of organic material, tells the new grower that he uses an 0-18-10 or an 0-10-6 commercial fertilizer, implying that the beginner should do the same, he is doing that beginner a disservice.

Here around Sebastopol there is a large area where potash is always ample in the soil and often is even excessive. On "the farm" frequent soil analysis which

I make myself, and a number of soil tests I have had made by a professional laboratory, show that my soil has more than ample potash. Would I not, then, be doing the beginner a disservice if I were to tell him I used 10-18-0 commercial fertilizer and, by implication, that he should do the same?

You cannot tell how much salt should be added to your soup until you have tasted the soup. The formula for adding nitrogen is a simple one. Just subtract the amount of nitrogen already in your soil from the amount of nitrogen necessary for optimum dahlia growth and you have the amount that should be added to the soil.

I suggest the following for the new dahlia grower. Go to your public library and get Riley's book on dahlia growing. Look in the index under fertilizers and take out a couple of books on this subject. And remember, whether you grow cabbages, dahlias or wheat, you are a FARMER.

The most valuable reading I get is in the A. D. S. Bulletin and the "California Farmer."

Welcome to the Gaylords

One of the big lifts to our morale here on the farm are the more or less regular visits of John Gaylord and his charming daughter, Edna. John is known to the dahlia world as an originator of great dahlias. Out here on the West Coast he is known to his friends also as a mechanical genius.

For many years back he has been a member of the Society of Automotive Engineers. His basement is full of devices he has built to make dahlia growing, root storing, etc. easier, better and, above everything, more methodical. John is never behind in his work. Always just a bit AHEAD of his work.

One of John's mechanical contrivances which intrigued us was very simple and very efficient. His compost cutter was simply an old lawn mower, a belt and an electric motor. Yet it does a better job than most expensive "store boughten" compost cutters.

Our conversation turned to the great value the beginner places upon blue ribbons. When the Dahlia Society of California gave checks to the 1st and 2nd place winners in each type brought to our meetings, the competition was not too great. When they wisely decided to

COME and SEE!

We invite you to visit our garden in September and see the NEW varieties now on test for Introduction in 1960.

We have had NEW and BETTER Dahlias for you every year for past 25 years. We will not disappoint you next season.

Catalogue Ready in January

RUSCHMOHR DAHLIAS

38 Vincent St., Rockville Centre, N. Y.

give special ribbons made for the occasion, competition became very great.

Pacific Coast Southwest Association

Which brings to mind Larry Sisk, one of the best publicity chairmen we have ever corresponded with or met. Larry sends out a steady stream of publicity notices which, besides being always 100% accurate, keeps San Diego in the Dahlia limelight.

Larry mailed us a schedule of the 59 Exhibition of the Pacific Southwest Dahlia Association and the Novice Section caught our eye. It offers some 26 classes in which the Novice may compete. And the Novice may continue to exhibit in this class until he has won five blue ribbons.

The set-up here is worthy of thought. The newer grower in the San Diego area has ample opportunity to win BLUE RIBBONS before he is "thrown to the lions" in the Amateur Class where the competition is often keener than in the Commercial Class.

We hear that our friend Nat Lundgren, of Santa Cruz, Calif. has vastly increased his planting of seedlings. His rapid growth as a commercial grower, we believe, is due to the fact that he puts his blooms on the tables of as many shows as possible, uses modern marketing methods and advertises his product ... ROOTS.

We dropped by to see Mr. and Mrs. Frank Nager of San Francisco. It is a source of amazement to us how they can grow so very many plants in a limited area and come up with so many beautiful blooms, including some seedlings that we really like very much.

Not too long ago we had a visit from John W. Dew, of Vallejo, Calif., a member of the D.S. of Calif. He has some very interesting ideas and we have the thought that it will not be too long before he will provide some real competition on the show tables.

Small World Department. Saw a vaguely familiar face at the last D.S. of Calif. meeting. The owner of the face came up to say Hello to us. It was new member of the society, Charley Doe, one of the kids we played with a little over a half century ago.

We could hardly close on the D. S. of C. without mentioning their Christmas Party and Dinner. This is, next to the big show, about the most important event of the year. We have never attended one that was not worth the cost of five years' dues.

The society invites visitors to their meetings. In fact, it was this invitation that made us become a member and start showing dahlias. We have never regretted the visit. — Yours for better dahlias, Dr. Julian R. Brandon.

•

The Greater St. Louis Dahlia Society

(New Participating A.D.S. Society)

The following officers in the St. Louis Dahlia Society were elected early this year:

President, Mr. Wm. Knetzer, 238 Bender Avenue, East Alton, Ill.; Vice-President, Mr. Joe Goss, 341 St. Louis Avenue, Ferguson 21, Mo.; Second Vice-President, Mr. Rolla Zufall, 10326 Maddox Avenue, Overland 14, Mo.; Secretary, Mrs. Bruno Faerber, 2130 Sun Valley Drive 21, St. Louis 36, Mo.; Financial Secretary, Mrs. Frank Walton, 6924 Oleatha Avenue, St. Louis 9, Mo.; Treasurer, Mr. Charles DuChesne, 9834 Barrington Drive, St. Louis 28, Mo.

St. Louis Dahlia Society's show date is September 26 and 27, 1959.

RAYMOND GRASS

It is with our deepest regrets that the St. Louis Dahlia Society announce to the A.D.S. that God in his divine grace has called to himself the soul of Mr. Raymond Grass. He shall be sadly missed by all Dahlia Societies across the country. Many many dahlia growers got their start through Raymond, many, many lectures were given by Ray, his untiring efforts will long be remembered by us all. Doctors had given Ray up a year ago, but he fought like a good soldier and always claimed he was fine. He died in his dahlia patch in his dear wife's arms. Our deepest sympathy to Mrs. Grass. Mrs. Bruno Faerber, 2130 Sun Valley Drive, St. Louis 36, Mo.

Dahlia Society of California Welcomed Into A.D.S. Group

By Dr. J. R. Brandon Jr.

At the June 9th meeting of the Dahlia Society of California, action was taken to have the society become a Participating Member of the American Dahlia Society.

This might well be called a "delayed action," for it had its inception in the visit of Lynn Dudley to the West Coast some three or four years ago.

On his visit here Dudley spoke at meetings of both the San Leandro Dahlia Society and the California Society, pointing out the many advantages of affiliating with the A. D. S. Mr. Dudley also visited the late Charles Garrity, the late Pete Magnuson, John Gaylord, Clement Ballay, Pete Harter, Dirk Schroeder (present President of the D. S. of C.) and many other Bay Area dahlia growers.

The seed was sown. And at the June 9th D. S. of C. meeting action was taken in a burst of spontaneous enthusiasm, and with no voiced opposition, to have the society become a Participating Society of the A. D. S.

The California society is one of America's oldest, having been organized in 1912. Its annual show, the San Francisco Flower Show, Inc., is held in conjunction with the shows of a number of other flower societies and differs greatly from most of America's shows.

At this show, which is rated as one of the most beautiful in America, ALL of an exhibitor's blooms are displayed together on the liberal sized table allotted to him. The only exceptions to this are his entries for Best in Show, Largest in Show, American Home Achievement Medal and the Dahlia Society of Calif. Medal.

Awards are made for Most Artistic Display and for a very large number of arrangements from the tiniest to the numerous 25 bloom giant displays in all the color classes. All exhibitors supply

their own containers and, as can be well imagined, the containers are not exactly of the "five and dime" type.

With the possible exception of some of the entries in the Beginners Class, it would not be much of an exaggeration to say that exhibitors spend as much time, money and effort on containers and "background" as they spend producing their blooms.

But the show comes but once yearly. Except, of course, for a second show held at the "Big E," as the "Emporium," one of San Francisco's largest department stores, is affectionately known. This show was promoted through the efforts of Sylvia Martin, wife of the then President, Mr. Sol Martin. Mrs. Martin also originated and promoted for the society a street display in "Maiden Lane," a lane in the very heart of San Francisco's downtown retail shopping district.

Between these show seasons the society conducts well-planned programs each meeting. These programs are of benefit to both Beginner and old timer. At the July 14th meeting, for instance, Sol Martin will conduct a class to inform Beginners how to put their blooms on the show tables. He will not merely tell them what to do but, what is far more important, what NOT to do.

Like most successful dahlia societies, the California Society is keenly aware that a society rises or falls with its Beginners. Every effort is being made to encourage more new growers to exhibit and to help these exhibitors in every possible way.

There is expected to be a salt shortage soon . . . due to the fact that so many dahlia stories now have to be taken with a grain of it.

DAHLIA PEOPLE

Here, There and Everywhere



T. C. Solem, President of the Minnesota Dahlia Society, when the Mid-West Show and Conference was held there last year (1958), stopped off for dinner and to spend the night (July 31-Aug. 1), with the Dudleys on his way to Richmond, Williamsburg, and points south. He travels extensively for his company, the Johnson Hydraulic Equipment Co., of which he is President and General Manager.

We had a lot of fun talking over dahlias and Dahlia People. Scarce a well known dahlia figure escaped comment, pro and con. He regretted that we have recently lost four A. D. S. Vice-Presidents through death. Said that he plants all his small dahlias and some "Bs" early in May and has had blooms and home display arrangements made by Mrs. Solem, for the past month. Also says that some larger ones which have been twice pinched, will be in bloom for their Show at the State Fair Grounds on Sept. 6 and 7.

Brother Solem says he will do his utmost to come east for the A. D. S. and New Jersey Combined Show on Sept. 23rd and 24th, at Garden State Plaza.

The last issue received of the "Michigan Dahlia News" (April), edited by Dr. Carrick E. Wildon, featured an article by C. E. Wildon and A. J. Wolff on "Dahlias in the British Isles," and one by Dr. Wildon, "The Planting of Dahlias" with Soil Preparation and other necessary Operations. It was an excellent dahlia issue.

Your Editor was the recipient of a Special Honor at the meeting of Michigan Dahlia Association on May 2nd, although we did not receive it until June 29th. It reads "Michigan Dahlia Association — Highest Merit. The Michigan Dahlia Association presents its Award of Highest Merit to — Lynn B. Dudley in recognition of a lifetime of meritorious service to the dahlia and recognizes him as among the Elite of Dahlia Growers." Signed by Ralph I. Bowman, President and Mrs. Arthur Wulff, Secretary, Michigan Dahlia Association. Although it is rather late, we do heartily thank the officers and members of the Michigan Dahlia Association for this great honor. We were born there, and lived half of our life in that great state and so this has a very special meaning for us. A "prophet being without honor in his own country, etc.," you know, makes this a cherished Award indeed for us. Thank you Michigan Dahlia Friends very much.

A. D. S. delegates to the Mid-West Show and Conference at Pittsburgh, Sept. 12 and 13 will include: Mrs. Sarah Wood, Mr. and Mrs. Walter Hardisty, Mr. and Mrs. Harry Dreyer, Mr. and Mrs. Henry Olsen, Mr. and Mrs. Roy Webb, Dr. and Mrs. Frederick Knocke, also Messrs. Mulcahy, Dudley, Mohr, Frank, Stoeckel, Diffenderffer and Dr. Preas. The headquarters will be at the Penn-Sheraton Hotel.

BALLEGO
LEIDEN HOLLAND

Apply for Ballego's
Well-Illustrated Catalogue
(Ask for it by Airmail)

Over 600 varieties from all over the world listed in big Catalogue. They represent every color and type yet known. Send for Complete Information re Importation.

FOR ANY CLASS-A WINNER

The AMERICAN DAHLIA SOCIETY, Inc.

Organized May 10, 1915



"The Society is formed for the purpose of stimulating interest in and promoting the culture and development of the Dahlia; to establish a standard nomenclature; to test out new varieties and give them such recognition as they deserve; to study the diseases of the Dahlia and find remedies for same, and to disseminate information relating to this flower; to secure uniformity in awarding prizes at flower shows, and to give exhibitions when deemed advisable."

BERTRAM E. PITT, *President*

9730-123rd St., Richmond Hill 19, N. Y.

EDWARD B. LLOYD, *Secretary*

10 Crestmont Road, Montclair, N. J.

HARRY DREYER, *Treasurer*

431 Lincoln Ave., Ridgewood, N. J.

LYNN B. DUDLEY, *Editor, Bulletin*

25 Irving Pl., New Rochelle, N. Y.

Editorial

It seems to this Editor that much would be gained in early orders by American Commercial Growers if they would get their lists and Catalogues out early. The November Bulletin will feature the New Varieties which win A.D.S. Certificates of Merit at the eight A.D.S. Trial Gardens and those which are awarded Medal Certificates at the over 40 Participating and Affiliated Society Shows which join in the A. D. S. Seedling Sweepstakes Awards. All

originators and introducers are notified in plenty of time of such winnings so that they can advertise their winners in the November Bulletin—and—get their catalogue copy to the printers early. The Early Bird in dahlia selling gets the early orders, or at least they stand a chance to get a bigger share of the New Variety Dahlia Dollars.

•

The second and last installment of the Dahlia Virus Study by Rowland A. Mildner appears in this issue. We have received wide acclaim for this article. One comment from Europe says, "The Virus article in the May issue of the Bulletin is the best we have ever read on this subject. Congratulations!" Another comment, "The A.D.S. has again done a wonderful service to dahlia growers in publishing the Mildner Study of Virus Diseases. We need to know more about these diseases and how growers may keep the diseases from spreading. Look forward to more research by A.D.S. to help all dahlia people everywhere. Am sending in a contribution to the Research Fund."

Editor's Note: Tentative plans are being made to reprint the Mildner Article in pamphlet form and make it available to all who contribute to the A.D.S. Research Fund, without cost. Copies will be available to others at a nominal price.

•

Not many checks or money orders have been received by Treasurer Harry Dreyer for the most important A. D. S. Research Fund. If you have been putting off sending your contribution, please send a check for a thousand or a dollar—whatever you can spare. No fund is more important to the successful fight against diseases and pests of dahlias. Every member and every Participating and Affiliated Society should take out some insurance in this manner against heavy future losses to all dahlia growers, including YOU. Read pages 11, 12 and 13 of the May Bulletin again please and then send in your contribution.

•

"Am enjoying the Bulletin very much. I hope that more information about growing and culture of dahlias will appear. Tell us about the prolific blooming varieties and those which keep well

when cut, please. Also the ones which regularly win Blue Ribbons. How they grow in other states. I grow 100 varieties, all cactus but five. Have been able to get many visitors to my garden interested in growing dahlias by showing them how nice they look in arrangements. They are outstanding as cut flowers."—Mrs. Ralph Eisenmayer, 1917 N. Main Ave., Springfield, Mo.

"Wish I lived nearer New York, so that I could attend the Executive Meetings of the A. D. S. I would like to "gather round" the table with all you folks oftener. Tell my friends I think of them on these occasions. I send my greetings by "Proxy."—Bob Connal, Rochester.

George Brunges phoned us from Elmira about Frank Eyer's death on July 11th. He also said that he was so busy with his new nursery and landscaping business that he did not get his dahlias planted till nearly the middle of June. The shows up in New York State that have depended on Brunges Blooms for their shows should begin to worry.

Richard T. Eddy, our old associate on the Honor Roll writes from Encinitas, Calif., "I do not know when any news has so saddened me as the word of the passing of Lou Roberts. Not only was it unexpected, but the suddenness of it makes it even more keen. Have lost practically all my dahlia stock with the scourge of "Lesion Nematode" and I am praying that VAPAM will save some of my top notch seedlings of the past four seasons. By the way, why not dedicate the August issue of the Bulletin to the Memory of Lou Roberts?" Editor's Note: Wish we could do this, and in a way, we are doing just that. See his picture on the Cover, Dick.

The Editor and Mrs. Dudley celebrated their 50th Wedding Anniversary on Sunday, July 29th. Some 80 guests, including two sons and a daughter; our two sisters from California; and seven of the eight grandchildren were present. There were many dahlia friends present

and these were kind enough not to criticize the dahlia planting, which had been somewhat neglected while getting ready for the big party. Our deepest thanks to the many who sent the beautiful flower arrangements and other gifts, even though we requested "No Gifts Please."

Plan to take your dahlia blooms to the show that your society will stage this fall. See the full list of Dahlia Exhibitions on Page Two, (inside front cover.)

Weather conditions across the country have been varied. In California they report no rain since March and the heat on several occasions has been terrific. Dr. Brandon reported that they had a spell of over 100 degrees, 111 on one day, near San Francisco, where the mean temperature is 71, year around.

In the East we had more rain in July than in May. For past six weeks both temperatures and humidity have been above 80. Indications are that a drought is starting in this section. But plants here generally are in good condition and many in bud early at this writing, August 1st.

We are indebted to H. L. Cummings of Chicago, one of Lou Roberts close friends, who first notified us of the latter's serious illness, and later of his death. He also supplied us with much data included in the story of Lou's life. Thank you "Buck."

For Dutch Dahlias

WM. De RUYTER
of OEGSTGEEST, Holland
54 Dorpsstreet

Free on Application

New Illustrated Price List 1959-60
of Awarded Novelties and Selected
Standard Varieties of the World's
Best Dahlias.

Guaranteed "True to Name"

Nationwide Dahlia Society News

CLOSING DATES FOR REPORTS

Jan. 10 for Feb. issue

April 10 for May issue

July 10 for Aug. issue

Oct. 10 for Nov. issue

Please send Reports by the above dates if you wish them included in following issue.

ALSO — Make Them Brief.

AND — Typewritten.

LENGTH — Participating, not over 270 words, 45 lines of type — 5 inches. Affiliated, not over 180 words, 30 lines of type, or 3½ inches. Count 6 words typewritten, as one line of 8 point type as printed in the Bulletin.)

Yazoo County Dahlia Society

The Yazoo County Dahlia Society met June 21 in the main auditorium of the County Building with Walter White, County Agent, as scheduled speaker.

Following a brief business session, a general discussion of dahlias diseases and their control was held. Due to the rainy weather, many members reported greater prevalence of insects and various remedies were suggested.

The fall show was discussed. The tentative date has been set for October 11 and 12, and members were given schedules. The show will again be held in the high school building with sections set aside for out of town exhibitors and the local garden clubs. Plans are being made for a bigger and better show than any in the past.

Before adjournment, B. S. Pruitt presented several of his seedlings to those present, stating that he had about 800 which he would share with anyone who wanted some. He also said he has planted one plot of named varieties and will plant another with the seedlings where the public can select both cut flowers and tubers on the ground.

Minnesota Dahlia Society

September 6th and 7th the Show of this society will be staged again at the Agricultural-Horticultural building at the State Fair Grounds, located midway between St. Paul and Minneapolis.

From all reports to date this year's show will be as large, if not larger than last year's show for two reasons. First, all reports say that the gardens in the Twin Cities are the best we have ever had. Second, the membership of the society is the largest in its history. Which indicates that many more exhibitors will be on hand and enter their blooms.

To all who visited the show last year, and there were literally thousands, we bid a hearty welcome and hope you will come again this year. While here, too, be sure to visit the Dahlia Trial Gardens, now in their second year, located at the Farm School of the University of Minnesota. Remember the dates, Sunday and Labor Day, Sept. 6-7. Dr. A. E. Jameson, President; Earnest Anderson, Vice-President and Show Chairman.

Greater Phila. Dahlia Society

Don't miss our Twelfth Annual Show, to be held at WCAU Radio & Television Center, City Line and Monument Avenue, Philadelphia, Pa., Sept. 19, 1959 and Sept. 20, 1959.

You are invited to exhibit at this Show, the Show Schedule may be obtained by contacting our Secretary, Mrs. N. L. Wright, 6926 Ridge Avenue, Philadelphia 28, Pa.

The Show is very easy to get to. Motoring? Pennsylvania Turnpike, then the Expressway to Philadelphia (City Line). Convenient? Extra large parking lot at the door. Help? Yes, our Show committee will assist you.

The Society welcomes Non-Members to exhibit; so, how about exhibiting at our Show, the City of Brotherly Love welcomes you.

If you cannot exhibit this year, by all means come and see this big DAHLIA SHOW. Mrs. N. L. Wright, Secretary, 6926 Ridge Avenue, Philadelphia 28, Pa.

Long Island Dahlia Society

The April meeting of the Long Island Dahlia Society was held on April 16, 1959. At this meeting, the Society voted to maintain the Dahlia Trial Gardens at the grounds of the School of Agriculture, Farmingdale, N. Y. and to assign the sum of \$150 for this purpose.

This entire sum was raised by the voluntary subscription of the membership present at this meeting. Martin Guttler was elected Chairman of the Trial Gardens and the amount raised is to be assigned as a scholarship to be applied to the study and maintenance of the Trial Gardens this year.

Trial Ground Field Day

As a relaxation before the last lap in preparation for the Fall Dahlia Show, the Long Island Dahlia Society will hold a Field Day and Picnic on Labor Day Sunday, September 6, 1959, at the Farmingdale Agricultural and Technical Institute, Farmingdale, L. I., N. Y. This will be an all day affair and members and guests will at this time have an opportunity to inspect the progress of the Trial Gardens at the same location. Mrs. Russell Holslag, Secretary, 547 Parkside Blvd., Massapequa, N. Y.

Alabama Dahlia News

We had a very wet spring and at times we wondered if we would need a boat to get about in—we didn't—the dahlias got planted and are now looking good. War has been formally declared on all insects. Woe unto any insects no matter what kind that casts an eye longingly at our dahlia patch for he is in for trouble.

Our eyes are set not only on our Show but also on those in Chattanooga and Atlanta. Pruning is being done accordingly and we will go to each with fire in our eyes.

Our appetites are already yearning over the good things to eat that we'll have at our Annual Picnic, July 25th at the "Pate Farm."

So often it happens that in the midst of life comes sadness. Our hearts are sad because of the death of a lovely, gracious lady, Mrs. George Alderson, wife of our good president. Since coming here to live almost nine years ago, she has endeared herself to us, for to know her was to love her. We treasure

the memory of this kindly, gracious lady and though no longer with us she will continue to live in our hearts. Maude Goodwin, Reporter, 2612 Ave. S, Fairview, Birmingham.

The Rochester Dahlia Society

The Rochester Dahlia Society will hold a two-day show September 19 and 20, (Saturday and Sunday), at the Rochester Museum of Arts and Sciences. Mr. Phillip Kimmell, 1441 Clover Road, Rochester, N. Y., is the show chairman, assisted by Mr. Harold Bircher, 37 Ontario View Street, Rochester, N. Y.

Plans are under way for a very good show, the best ever. We welcome out of town exhibitors and guests. Any one wishing to attend and desiring a place to stay may contact the show committee, arrangements will be made.

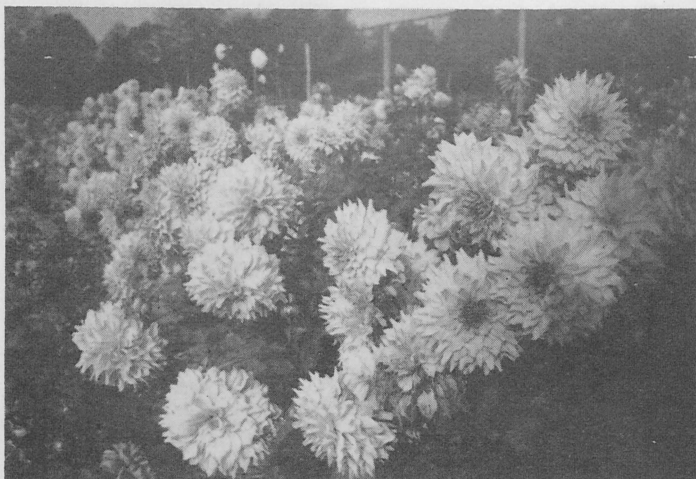
A banquet is planned for Saturday night, after the judging. From all reports it will be a gala affair. Old friends will get together, new people in the dahlia world will learn from the discussion of the experts and all will have a good time.

Rochester is known as the "Flower City," let us show you that it is a friendly city, too. (Mrs.) Celia Tulley, Corresponding Secretary, 985 South Avenue, Rochester, N. Y.

Pacific Northwest Dahlia Conference

We are pleased to report that the Pacific Northwest Trial Garden has thirty-five new entries, and is re-growing two varieties from the 1958 season: a total of thirty-seven varieties on trial. All are doing fine so far, although there are no blooms as yet. The garden is in the midst of a fine buffer planting, donated by members of the Washington State Dahlia Society, of Tacoma.

The garden is located in a beautiful spot overlooking Puget Sound, and next to the bus depot in Point Defiance Park, Tacoma, Wash. The park department has done a wonderful job in planting and caring for the dahlias. The personnel have been very co-operative. Clifford A. Taylor, Director, 1420 South Stevens Street, Tacoma 5, Wash.



Prolific Blooming Cherokee Beauty

Mrs. Ralph Eisenmayer of Springfield, Mo., writes: "Tell us about prolific blooming Dahlias." Well here's one variety which makes a colorful showing in any garden. This is a row of Cherokee Beauty grown by its introducer, Dahliadel at Vineland, N. J. It is an "A" size, Inf. Dec. Pink. (Photo, Dudley)

National Capital Dahlia Society

National Capital Dahlia Society will be host for the 5th Mid-Atlantic Conference Show. It will be held in conjunction with our 24th Regional Show on Sept. 26 and 27, 1959, at U.S. Botanic Gardens located at the foot of Capital Hill. We believe we can count on Conference members to help make this show one of the best the Nation's Capital has ever seen. The Chairmen of the various Show Committees are:

Orman E. Shneeman, Vernon Ailstock, Lloyd Dye, Ben Stong, George Dodrill, Mrs. Z. Gillam, Samuel Shapiro, Russell Hill, Vernon Ailstock, Cylda Stewart, Rixey Gray, James Stewart, Ed Christopher, Mrs. Joe White, Carl R. Greimel.

You will find these ladies and gentlemen friendly and cooperative. They make a fine team under the direction of our President, "Johnny" Gilmer. Most of our past presidents and our Dahliagram editor, Arthur S. "Bill" Mason will be on hand too. Our show is a good place to see your dahlia friends.

At this writing, "scattered showers"

is all the weather man has promised for quite some time. And he is right too! Sometimes they are scattered here and there (but not in one's own garden), and sometimes one does get the scattered shower—a few drops scattered throughout the garden. But dahlias are such wonderful flowers. Those who can water their plants will come in with fine blooms, and those who must grow "dry" will manage too.

Some of the finest people in the world grow dahlias. Come to our show and meet folks like yourself. Carl R. Greimel, 6369 Ridge Drive, Washington 16, D. C. OLiver 2-0401.

Michigan Dahlia Association

The Michigan Dahlia Association presented awards at the annual root auction May 2, 1959, at Michigan State University. Mr. and Mrs. A. H. Emmons, Barton Elliot, J. Louis Roberts, Lynn B. Dudley, Nick Koenig, James Raymond, Dr. Paul Morgan and Dr. C. E. Wildon received merit awards for contributions to dahlia culture and to

dahlia organizations for twenty (20) years or more.

Raymond Olson, James Faggion, John Allen, Mrs. Robert Schilling, B. H. Bottom, Mr. and Mrs. Ralph Etienne, and William Halvaty, Jr., received green thumb awards for outstanding skill in growing dahlias.

Victor Steckle, Eugene Holland, Arthur J. Wulff, Mr. and Mrs. A. H. Emmons, Barton Elliott, J. Louis Roberts, Dr. and Mrs. Norman Ackerman, Herman Rhode, James Raymond, Mr. and Mrs. Carl Sattler, Dr. Paul Morgan and John Trestrail were given awards for proficiency in judging dahlia varieties in the field.

The dates for the Michigan Dahlia Association State Show are August 29-30 in the Civic Auditorium, Lansing, Michigan. Marjorie Bowman, Corresponding Secretary, 321 Coler Street, Jackson, Michigan.

North Jersey Dahlia Society

As the Tenth Anniversary Show time comes nearer, we find our members working diligently to put this show over most successfully. North Jersey has had wonderful shows and has grown so fast, it seems impossible to improve over the last one; nevertheless, with the new location where all exhibits will be on one floor, and plenty of room to set up for the show, the Freakness Grange Hall offers the most in conveniences, rain or shine. Located just down the street from our previous show spot on the Hamburg Turnpike. An added attraction which should be quite interesting, is a class for seedlings which have been named in former years at the North Jersey Shows among which are "Lou Costello," "Lawrence Welk," "Dorothy Canfield," "City of Paterson," "Charlotte Smith," "Mary McCrowe," "Marna Green," "Bess Titus," "Bill Vooz," etc., it will be interesting to see how many of these find their way back to the show tables. Our annual family outing will be held on the third Sunday in August, and we hope all will attend as the affair has always been an enjoyable one. A cordial invitation is herewith extended to all readers to visit our show the weekend of Sept. 5th and 6th. Everett T. Church, 1480 Alps Road, Wayne, N. J.

Southe'strn Mich. Dahlia Society

With the usual busy time of planting just behind us, we are now looking forward to our Annual Picnic meeting to be held on Sunday, July 26. This year "Bill" Cadwell has graciously invited us to his lovely home for the event.

Our Show will be held on Saturday and Sunday, Sept. 12 and 13, at the O'Shea Recreation Center in Detroit, and we extend a hearty invitation to all who are in the vicinity of this Dynamic City at that time, to attend. Jean Millar, Recording Secretary, 15848 Pinehurst Avenue, Detroit 38, Michigan.

What most Dahlia Growers need is an alarm clock that will ring when it is time to rise to the occasion in a Dahlia Society meeting.

He went to an agricultural college to study dahlia culture and his classmates voted him "the boy most likely to sack seed."

If you think that you work harder than the average dahlia grower to produce better blooms, you are just an average dahlia grower.

It's natural that a dahlia grower becomes quieter and quieter as he grows older. He probably has more to keep quiet about.

Healthy Dahlias from Holland!!

Choose from Holland's most complete list of over 700 choicest varieties originated all over the world.

Apply by Air-Mail for FREE 1960 Catalogue, giving full information how to import our better dahlias.

FA. D. BRUIDEGOM

BAARN

HOLLAND

DAHLIA FRIENDS—Here's the real low down. The American Dahlia Society would like to send this Quarterly Bulletin to MORE Dahlia Growers. It needs more Young, Willing, ACTIVE Members. Probably you know some of that breed of Dahlia Growers. Chances are that they need the Bulletin to help them grow Bigger and Better Dahlias.

The further inside facts are: John Metzger (and Mrs. Metzger), are incessant travelers. You can hardly ever find them home. That wouldn't be so bad, except that he is the A. D. S. Membership Chairman. Being away so much he really needs your help to entice some of your neighbors to "join up" with this society. Understand, he's not too bashful to ask you to do this. He just isn't home often enough to do it. So, why not surprise him by doing some dahlia A. D. S. member salesmanship? Fill out the Blank below with the name, address, etc., and send it (with the money), to John Metzger, 126 Allen Street, Irvington, N. J.

A.D.S. MEMBERSHIP BLANK

Please Use This Blank to Renew Your Membership
Or Help a Friend to Join

American Dahlia Society, Inc.
Harry A. Dreyer, Treasurer
431 Lincoln Ave., Ridgewood, N. J.

Please (Renew) (Enter) my membership in the American Dahlia Society. Enclosed find (check) (money order) for \$4.00, of which \$3.00 is for the annual subscription to the Bulletin of the American Dahlia Society, published quarterly.

Name.....

Street No.....

City..... State.....

Name and Address of a.....

Friend Who Might Join.....