

BULLETIN

of the

AMERICAN DAHLIA SOCIETY

AUGUST — 1958

Published Quarterly — Third Quarter



Transporting Dahlia Show Blooms 500 Miles

Paul Hale describes (Pages 8-9) how he, with wife Vicki as helper, travel long distances with station wagon loaded with their exhibition blooms and win awards. Here Paul is fastening the stems with rubber bands to hold them in firm position in their cans of water. "After carefully checking to see if end of stem is bottomed in the chicken wire in base of can, it is placed in its notch on the rack and tightly held there by the band."

DAHLIA SHOWS ACROSS THE NATION

Date	Society	Place	City
Aug. 2-3	San Diego Co. Dahlia Soc.	Recital Hall, Balboa Park	San Diego, Calif.
Aug. 16-17	Inglewood Dahlia Society	Inglewood High School	Inglewood, Calif.
Aug. 23-24	Snohomish Co. Dahlia Soc.	Public Library	Everett, Wash.
Aug. 23-24	Portland Dahlia Society	Sunken Ball'r'm, Masonic Temple	Portland, Ore.
Aug. 21-24	Kitsap Co. Dahlia Society	Bremerton Civic Cen. (Co. Fair)	Bremerton, Wash.
Aug. 30-31	Kitsap Co. Dahlia Society	Bremerton Civic Center	Bremerton, Wash.
	Host to Pacific Northwest Dahlia Conference)		
Aug. 30-31	San Leandro Dahlia Society	Bancroft Jr. High School	San Leandro, Cal.
Aug. 30-Sept. 1,	Badger State Dahlia Soc.	Community Center	Madison, Wis.
Aug. 31-Sept. 1,	Minnesota Dahlia Soc.	Hort. Hall, Minn. State Fair	Minneapolis, Minn.
	(Host to Mid-West Dahlia Conference)		
Sept. 6-7	Dahlia & Plant Specialists	Garden Center	Cleveland, Ohio
Sept. 6-7	Washington State Dahlia Soc.	Normana Hall,	Tacoma, Wash.
Sept. 6-7	Southern Oregon Dahlia Soc.	Blossom Gulch School	Coos Bay, Ore.
Sept. 6-7	Irvington Garden Club	Irvington High School	Irvington, N. J.
Sept. 6-7	Southern Tier Dahlia Society	Mark Twain Hotel	Elmira, N. Y.
Sept. 6-7	Michigan Dahlia Ass'n.	I. M. A. Hall	Flint, Mich.
Sept. 13-14	American Dahlia Society New Jersey Dahlia Society Irvington Garden Club	Newark Airport	Newark, N. J.
Sept. 13-14	Seattle Dahlia Society		
Sept. 13-14	Southeastern Mich Dah. Soc.	Green Lake Fieldhouse	Seattle, Wash.
Sept. 13-14	North Jersey Dahlia Society	O'Shea Community Center	Detroit, Mich.
Sept. 15-16	Dahlia Society of Ohio	First Nat. Bank & Trust Co.	Wayne, N. J.
Sept. 21	Long Island Dahlia Society	Higbee Auditorium	Cleveland, Ohio
Sept. 21	Fresno Dahlia Society	Mid-Island Shopping Plaza	Hicksville, N. Y.
Sept. 21	Rochester Dahlia Society	Fresno High School	Fresno, Calif.
Sept. 20-21	Baltimore Dahlia Society	Rochester Museum-Arts Sciences	Rochester, N. Y.
Sept. 20-21	Dahlia Society of Ala.	Eastpoint Com. Hall	Baltimore, Md.
Sept. 20-21	Bergen Co., Dahlia Society	Thomas Jefferson Hotel	Birmingham, Ala.
Sept. 20-21	Southtown Dahlia Club	Liberty School	Englewood, N. J.
Sept. 20-21	Dahlia Society of Kentucky	Hamilton Park Field House	Chicago, Ill.
Sept. 20-21	Takoma Horticultural Club	Kentucky Hotel	Louisville, Ky.
Sept. 20-21	East Liverpool Dah. & Fl. Soc.	Takoma School	Washington, D. C.
Sept. 20-21	Greater Phil. Dahlia Society	West Gate School	East Liverpool, Ohio
Sept. 24-25	Berholme Hort. Society	WCAU Television Center	Philadelphia, Pa.
Sept. 27-28	Mid America Dahlia Society	Cheltenham Fed. Sav. & Loan	Philadelphia, Pa.
Sept. 27-28	Ohio Valley Dahlia Ass'n.	Country Club Plaza	Kansas City, Mo.
		Cincinnati Art Museum	Cincinnati, Ohio
Sept. 27-28	Dahlia Society of Tenn.	Hotel Patten	Chattanooga, Tenn.
	(Host to the Southern States Dahlia Association)		
Sept. 27-28	National Capital Dahlia Soc.	U. S. Botanic Garden	Washington, D. C.
Sept. 29-Oct. 1	Virginia Dahlia Society	Miller & Rhoades Store	Richmond, Va.
Oct. 4-5	Central Valley Dahlia Soc.	Bakersfield Art Gallery	Bakersfield, Calif.
	(Host to the Pacific Southwest Dahlia Association)		
Oct. 4-5	Dahlia Society of Georgia	Southeastern Fair	Atlanta, Ga.
Oct. 4-5	Greater Kansas City Dah. Soc.	Shawnee Mission High School	Mission, Kan.
Oct. 4-5	Suburban Dahlia Society		Pikesville, Md.
	(Host to Mid-Atlantic Dahlia Conference)		

Advertising Index

	Page
Ballego & Sons	21
Bruidegom, Fa. D.	20
Dahliadel	19
Dahliagram	22
Parrella Dahlia Gardens.....	14
Pennypack Gardens.....	13
Ruschmohr Dahlia Gardens	12
The Garden Journal.....	23
West Coast Dahlia.....	17
Wm. de Ruyter	23

ADVERTISING RATES

Minimum space accepted one-eighth page.
See Special Discounts for 2 and 4 consecutive insertions below.

	One Issue	Two Issues	Four Issues
Full Page	\$ 80.00	\$145.00	\$280.00
Half Page	50.00	90.00	172.50
Quarter Page..	35.00	60.00	115.00
Eighth Page ..	20.00	35.00	67.00

When ordering 2 or 4 consecutive issues, advertiser will be billed for all insertions ordered within 10 days of publication of the first one. The entire amount for all advertisements ordered will be immediately due, without further discounts, unless credit has been previously established, and payments arranged with Treasurer Henry Olsen.

SPACE SIZES

Full Page	4½ by 7⅞ inches
Half Page	4½ by 3½ inches
Quarter Page	2½ by 3½ inches
Eighth Page	2½ by 1¾ inches

CLOSING DATES FOR ADVERTISING

February — JAN. 15; May — APR. 15;
August — JULY 15; November — OCT. 15.

Entered as second class matter at the Post Office at New York, N. Y., under Act of March 3rd, 1879.

BULLETIN of the American Dahlia Society

Contents for August, 1958

SERIES XXXI, No. 3

Published by
THE AMERICAN DAHLIA SOCIETY, INC.
22 Reade St., New York 7, N. Y.

CONTENTS

	Page
Dahlia Shows Across the Nation.....	2
The 158 Metropolitan Exhibition.....	4
Shall We Extend the "B" Size?.....	5-6-7
Driving 500 Miles With Blooms By Paul and Vicki Hale.....	11-12-13
Trial Garden Report.....	10
A.D.S. Seedling Sweepstakes.....	10
Let's Promote the Dahlia as a Flower, By P. F. Kershishnik.....	14-15
Dr. Henry Cole Parker Dies.....	15
Charles Garrity Dies.....	12-13
Editorial	15-16
Nationwide Dahlia Society News.....	18-22
Mid-West Conference	20-21
A.D.S. Membership Blank.....	23
Name "Branch" to Be Changed	24

Membership dues in the American Dahlia Society, \$4.00 per year, of which \$3.00 is for the annual subscription to the Bulletin of the American Dahlia Society, published quarterly.

Send membership dues to the Treasurer of the Society, Henry A. Olsen, 48 Clement Avenue, Elmont, New York.

Address all editorial and advertising copy to the
Editor - - LYNN B. DUDLEY
25 Irving Place, New Rochelle, N. Y.

The 1958 Metropolitan Exhibition

Newark Airport, Sept. 13-14

The 1958 New York Metropolitan Dahlia Exhibition, the 44th of the American Dahlia Society, the 36th of the Dahlia Society of New Jersey, and the 30th of the Irvington (N. J.) Garden Club will follow shortly the publication of this BULLETIN.

High among the aims and plans of your Show Committee is the thought to lay more and proper emphasis on the smaller types of dahlias — emphasis not only on their place in the exhibition, but following their recognition on the show table in the home as well and in the garden. We refer to the "M," "BB," and "B" type classifications — those between the perfect little pompoms and the enormous exhibition blooms. These latter types are of course a tremendous asset to the exhibition, in fact we must have them. So long as these big blooms filled most of the space at our exhibitions, the impression grew that these were the most typical dahlias. Our 1958 schedule is designed by our President to produce a classification, and entry to make it as interesting to exhibit these smaller flowered "M," "BB," and "B" types as the giant "A's." To make it more interesting this year, and in addition to the FLOWER GROWERS' LEONARD BARRON MEMORIAL AWARD, and the A.D.S. Trophy, we are favored with the Silver-Bronze Medallion of AMATEUR GARDENING, an English publication which evidences a pronounced love of the dahlia. Their award will replace the Dr. McDade Trophy, this having been retired by Harry Frank in 1957. The AMATEUR GARDENING class, however, will be a one year effort as are the FLOWER-GROWER and the A.D.S. Trophies.

Entries from Belgium, Holland, and Great Britain have already been received, but are of course subject to proper climatic conditions prior to shipment and at time of shipment. Adverse conditions in September of 1957 prevented the arrival of foreign air entries last year you will recall. The air-lines promise domestic shipments over night at the longest from any point to Newark where our committee will be on the receiving line to handle them with all due care.

Our New York City headquarters are at the Hotel Statler where rooms are

now reserved. Intending occupants should promptly notify the writer as soon as possible — it being always easier in a New York hotel to cancel reservations than to obtain them at a late date and

• — • — • — • — • — •

Breathes there a dahlia exhibitor, with soul so dead, who never to himself hath said, as he viewed his first 23 inch dahlia on the show table, "Let Eddie O'Keefe top that one."

• — • — • — • — • — •

in a hurry. The Airport Limousine Service will arrange transportation to the Newark Airport from the Statler and from the Air-lines Terminals. — Ed B. Loyd, Show Chairman.



Mrs. Charles Friburg, "B" St. Cac. Yellow

Another winner of the A.D.S. Certificate at the Pacific Trial Gardens, Oakland, Calif. Originator, Theodore Sjoburg, for many years a mail carrier, address 2180-48th St., Oakland. Bloom is a straight cactus, Primrose yellow. Mr. Sjoburg used to send dahlia seed to the Editor, many years ago. (Photo courtesy L. E. Sanford)

Shall We Extend the "B" Size to 9 Inches Or Split the "A" Size-8" to 11" & Over 11"?

When the A.D.S. last year adopted the new Small-Medium, (B-B) size category for Exhibition and Trial Garden purposes, another problem was posed. This came about because the "B" size group is now restricted between 6" and 8" and does not include many fine decoratives and cactus, measuring between 8" and 9" leaving them to compete with the 11", 12" and 13" giants, where they generally lose out because of preference of many judges for size.

Undoubtedly there is confusion in the minds of some judges as to the relative importance of size in scoring. This could easily be the result of the variations in size-point credits in the two "A" size show score cards. In the A.D.S. "Basket or Arrangement" Score Card, size is rated a maximum of 10 points, or five points less than either color or form. But in the "Largest and Smallest, Most Nearly Perfect Bloom Score Card, 50 points is given to size, and 50 points to Quality of Bloom. The former, or 10 point allowance should be used to judge all "A" size blooms on the show table, except the "Largest in Show" Class. The 10 point maximum is always the allowance for size in Trial Ground and Seedling Sweepstakes judging also, using A.D.S. Field and Bench Score Cards. It should also be mentioned that the A.D.S. Score Cards make no allowance for size points in the "BB" or "B" classes.

Official A.D.S. Size Divisions = 1958

← "M" - Small →				← "B-B" Small Medium →		← "B" - Medium →		← "A" - Large →	
1"	2"	3"	4"	over 4"-5"	up to 6"	over 6"-7"	up to 8"	over 8"	
← Pom Pons →									

* Extension of "B"-Size as Proposed by Maytrott in 1957 *

1"	2"	3"	4"	over 4"-5"	up to 6"	over 6"-7"	--- 8"	up to 9"	over 9"
← M →				← BB →		← B →		← A →	

Leaving B-Size As-is and Splitting the A-Size-A and AA

1"	2"	3"	4"	5"	6"	7"	8"	9" to 11"	over 11"
← M →				← BB →		← B →		← A →	← AA →

The above chart, crudely drawn by the Editor, attempts to show just how the "B" and "A" Size Categories will be changed if one or both of the proposals in this article are adopted, first by the A.D.S. Executive Committee and later in January at the Annual Meeting of the Members at large.

It is possible also that there is some confusion in the minds of exhibitors as to where one size category leaves off and the other begins. This could be the result of the rather indefinite wording of the Official Dahlia Classifications, particularly in the "B" and "BB" categories. In our opinion and also that of Charles Diffenderfer, Chairman of the A.D.S.

Classification Committee, these definitions should be changed to read: "BB" Small Medium, over 4" but not over 6". The "B" Medium should read, over 6" but not over 8" (or 9"). Present wording of the definition would allow a 6" dahlia to be both a "BB" and a "B."

These are needed clarifications of in-
(Continued on following page)

Shall We Extend the "B" Size?

definite definitions, but the larger problem for the present is the need for changes in the limits of size categories. These are: (1) the restricted size range of the "B" Medium Class which by being limited to not over 8" excludes many fine dahlias of between 8" and 9" and puts them in competition with the large 12" to 13" and over dahlias; and (2) the present range of sizes in the "A" size class, which under classifications rules pits many 8½" dahlias against the Big Boys, up to 13" and 14".

Obviously, some re-arrangement of these size limits is needed. Seeking to find the sentiment of A.D.S. members in this connection, your editor began to send out letters of inquiry last March. Of the first batch of letters, one reply was received. Other letters were sent, we received more replies but again many members did not want to commit themselves, or they did not take time to think the

● — ● — ● — ● — ● — ● — ● — ●
**At a Dahlia Society meeting —
 It's never so bleak that it couldn't
 be bleaker — there could have
 been a second speaker.**
 ● — ● — ● — ● — ● — ● — ● — ●

matter through. We took up the question in several recent dahlia meetings, including one where 30 A.D.S. officials were present. The sentiment at these meetings was definitely in favor of extending the "B" size to 9" and not to split the "A" category.

One Branch Society passed a resolution asking the Executive Committee to take action to split the "A's," into "A" — 8" to 11" and AA—over 11". One A.D.S. Past President wrote, "In my opinion, the following would simplify the situation: Leave the "BB" size from 4" up to 6"; change the "B" size from over 6" to not over 9"; make the "A" size over 9", with no tolerance allowed in any size." One large eastern exhibitor and consistent prize winner writes, "I do believe we need to make a change. I would prefer moving the present size limit for "B's" to from 6" up to 9", as this would be less cumbersome than creating a whole new size class in the "A's." And don't forget that if we did create a super size class of "AA's," there would be many color classes that could not be filled with existing varieties."

The manager of an eastern dahlia ex-

hibition (not the A.D.S.) says: "I've always felt that a separate class for super-giants, 11" and up, would be a good move. Time after time, I've judged at shows in the large classes and noticed that with most of the judges, size was invariably the prime consideration. So I say, let the growers of the super-doooper giants put up a big fight and let the best man (men) win."

An A.D.S. Tral Ground Official writes: "I regard the proposal to raise the size limit of the "B's" to 9" as only the second best solution. The advantage thus gained for the 8" to 9" blooms is at the expense of the 7" varieties, which would then be in the position of the "BB" group before we established this class. I believe that the separation of the Large Class into "A" and "AA" sizes is the real solution to the problem."

An A.D.S. Vice-President on the Pacific Coast adds: "I would like to put in my two bits worth in this discussion. I believe very strongly that we should either change the A.D.S. Official Score Cards, especially the Field Score Card, used in the Tral Gardens, or make a division of the "A's" into LARGE and GIANT, or "A" and "AA." The fact that 10 points may be given to a variety, on the Score Card, for size, seems to mean that it is almost impossible for a dahlia that measures 8½"x4½" or even 8½"x5½" to be classed as an "A" dahlia, and receive a score of 85 points or over. One just cannot score it up close to 10 points for size. Now it seems to many of us that these 8½" dahlias have a very important place in shows, in the garden and in the home. Indeed, it is a very important size category and embraces many, many dahlias which are both beautiful and useful. In fact, I can see very little difference between the over 8" dahlias and the under 8" varieties in general utility. But the under 8" are now classed as "B" size, and as such receive no points on the Score Card for size. Certainly a simple solution would be to designate Large Varieties as those between 8" and 10" or even 11" and let those above 11" (the true Giants) compete against each other and receive their extra points for SIZE."

As our readers are aware, this subject was discussed and recommendations made by Warren Maytrott in the August 1957 BULLETIN. He said in part: "There has always been much controversy over the size classifications of the dahlia for show purposes. For years, the "A's" and "B's" competed against each other, with the

*If the proposal to extend the "B" size category to 9 inches is adopted, here are a few of the many present "A" size dahlias which would in most instances come into the new "B" size classification, namely over 6" up to 9".

Hart's Whirlaway — The Whirl
Phenomenon — Whirlwind
Ami Pardieu — Rachel Jackson
Byamee — Oakleigh Champion
The Outcast — Bronze Giant

Mr. Maytrott continued, "Yes, let's face it, in many instances the judges do not use or follow the A.D.S. Score Card in show judging and therefore override the 10 points (maximum) allowed for size and ignore many of the 90 other point set aside for perfection in Color, Form, Distinctiveness, Stem, Bloom Position and Substance.

"If we do adopt this widened 3-inch spread in the "B" Class," continued Mr. Maytrott, "there are two final recommendations I would make. Let us have no size tolerances in scoring. Have the Pom Pom size up to 2"; Miniatures up to 4"; "BB" Small Medium from 4" up to 6"; "B" Medium from 6" up to 9" and all "A's" 9" or over. My second suggestion is that any dahlia (except Poms) if grown oversize according to its official classification may be shown in the next larger size classification.

The opinions of expert growers and showmen vary, as can be seen from the above quotes. But all seem to agree that some change should be made in present size limitations in the "B" and/or "A" classifications. This matter should have the serious thought of dahlia growers and exhibitors everywhere.

In order that members can see these problems more clearly, we show herewith a size-Division-Chart, with a list of some popular dahlias which now compete in the "A" size class. But most of all these would be classed as "B's" if it should be decided to extend the "B's" to from over 6/ up to 9". They now compete with such dahlias as Mary Elizabeth, Quinn's Tidal Wave, Mrs. Hester Pape, Arthur Godfrey, Autumn Blaze and other giant dahlias. — L.B.D.

7

Driving 500 Miles with a Load of Dahlia Blooms

By Paul and Vicki Hale

(Editor's Note: Paul Hale is the Assistant Editor of "The Dahlia," the Official publications of the Central States Dahlia Society. He is also and A.D.S. Vice-President and a member of the Bulletin Editorial Committee. He and Vicki (Mrs. Hale) live at Brighton, Illinois, with their three daughters and one son. On July 2nd, we received a postal, which read, "Well here I am all piled up in my hospital bed with an acute kidney infection." Then, on July 14th we received another message which said, "I'm still flat on my back with this blasted kidney trouble, but I should be out of the hospital in a few days, but the doctor has ordered two weeks at home before I go back to work." Then, Paul, bedridden as he was, wrote the article herewith which we know our readers will appreciate all the more because it is written in the midst of pain, but with a dahlia growers true optimism and undaunted courage.)

Long Distance Showing

"Instead of the usual 'cutting the blooms to be shown the night before,' we've found ourselves cutting blooms two nights before some shows in the past two years. The reason for cutting them this early is that sometimes we drive all day and half the night to get there and set up the exhibits. But we have proven to ourselves, even if to no one else, that one can transport dahlia blooms hundreds of miles and get them there in condition to win some awards over some of the local, picked-much-later exhibits. Is it worth the extra effort? Well, read on.

A good example of long distance showing was our trip to the Southern States Conference Show, held in Birmingham, Ala., last fall. Having met many of the Southern folks at various Mid-west shows, and having previously experienced the dahlia brand of Southern Hospitality, we decided to take our two older daughters, load up our blooms and drive to Birmingham, Ala. (After all, it shouldn't be too much of a chore, as this southern steel city was only 500 miles away.) However, several problems confronted us. We talked them over, and fortunately came up with right answers."

"First Problem: Should we cut blooms early Friday night and drive all night or should we cut Thursday night, pack up and drive down during the daylight hours Friday? We decided to cut our blooms Thursday night, pack them immediately into our Plymouth Suburban, hit the hay for a few winks of sleep and then leave early Friday morning. This way we and the girls could view the countryside which was all new to us.

"We hoped to arrive about 8 o'clock Friday evening if all went well. This would give us plenty of time to unload and get our blooms into fresh water and then get a few hours of sleep before

Saturday morning when the show was to be set up. The plan worked out splendidly and we arrived as planned. Sure it was a lot of driving, but we 'spelled' each other and arrived without being too fatigued and the blooms were in real good condition, despite the ride.

"Here's how we packed the blooms, step by step:

"1. A piece of $\frac{1}{2}$ inch plywood is placed on the floor of the Suburban. This has been cut and notched so it fits tightly, with no possible way of shifting around.

"2. Five rows of three-gallon lard cans (four cans to the row) are fitted into a frame nailed to the plywood floor.

"3. A rack of 1 inch x 1 inch redwood slats is then placed on top of the cans and anchored firmly. Now the floor, cans, and rack are fastened together as one piece. If any shifting around happens, they will shift as one unit.

"4. About nine o'clock Thursday night we started cutting blooms. The patch had been gone over very carefully Thursday afternoon and all the blooms worthy of exhibiting were marked with a small piece of white cloth tied around the stem. This stops all hop-skippping and jumping around the garden after dark to find good blooms. We cut only the blooms that are marked and go up and down each row until finished.

"5. The cans are filled at the very last minute with tap water (positively no preservative is added). The cans had been previously scrubbed and rinsed clean. A circular-cut piece of chicken wire was forced and wedged into the bottom of each can.

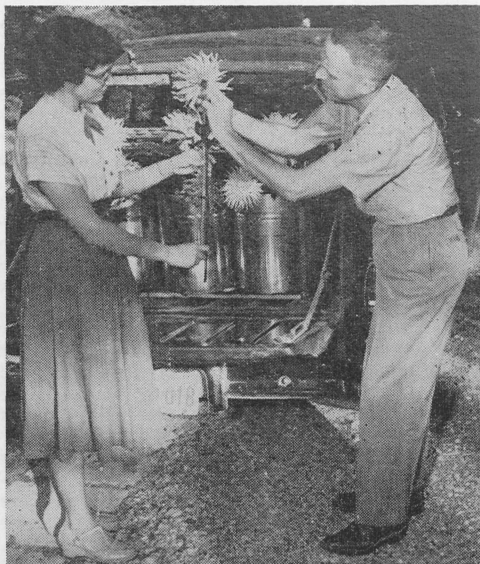
"6. Each bloom is carefully carried to a large can of water sitting beside the car. A 1/4 inch bamboo cane is fastened to each stem with 'Twistems.' One at the top, one at the middle and one at the top of the stem. This bamboo cane strengthens the stem, prevents a heavy bloom head from swaying and sometimes helps to straighten a slightly crooked stem while enroute.

"7. When 15 or 20 blooms are caned and all foliage that might be submerged removed from the stem, we start loading. Paul gets in the car and starts fastening each stem to its place in the rack with a rubber band. *Before each bloom is in place, a final cut is made on the stem, under water.* This is very important, in fact the most important item of all. (He carefully fishes out the cut off piece so that it will not remain there and stagnate the water.)

"8. As each bloom is fastened with its rubber band (see illustration on front cover) Paul carefully checks to see if the stem and cane are "bottomed" in the layer of chicken wire in the bottom of each can. With each stem fastened near the top with the rubber band and the bottom end anchored firmly in the chicken wire, there is very little swaying around by the blooms when the car is in motion.

"(It usually takes two or more hours to cut and load and just before the tail gate is closed, Paul sprays all the blooms and foliage with the garden hose set at fine mist.

"10. The inside of the windows have been covered with aluminum foil which

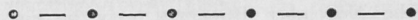


This Shows Paul and Vicki Unloading Blooms
"Vicki is no 'Dahlia Widow.' She's in there pitching and helping to unload blooms."

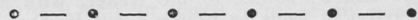
reflects outward at least some of the hot sun rays, during the daylight drive.

"11. We carry a quart size mist sprayer along and several times during the trip the blooms and foliage are sprayed. This definitely keeps the dahlias fresh enroute.

"Not all is as simple as this sounds, but nary a bloom was lost on this 500 mile trip to Birmingham from Illinois.



The greatest winnings at dahlia shows have been accomplished by two types of people, those who were smart enough to know it could be done, and those too dumb to know it couldn't.



But, even so, the wonderful time we and our girls enjoyed more than repaid us for the extra effort. And we did win some awards and that is always the ultimate goal of the dahlia enthusiast.

We are looking forward to our next trip with dahlia blooms. This will be to the Southern States Conference Show at Chattanooga, Tenn., this fall. We hope to meet you there and talk some more.

Trial Garden Report

Everyone must be growing seedlings if the increase in the number of varieties sent to the Trial Gardens this year is any indication. That there will be many meritorious varieties among them goes almost without saying. As a general rule, only the best are sent, and most of them by men who have been growing and selling dahlias for many years, and who know a good one when they see it. The A.D.S. Trial Garden Committee is most gratified by the support evidenced by the increase. Its members, as well as the judging groups of all the societies which superintend the various trial gardens, will be glad to spend the many hours in the gardens which will be necessary to get them all fairly judged.

The latest reports show the number of varieties on trial at each garden as follows, but some of these reports were received early, and there may be some additional late entries in several of them.

Atlanta	40
East Lansing	67
Cincinnati	32
Farmingdale	76
Oakland	74

The three unofficial Trial Gardens at Madison, Minneapolis and Tacoma are off to a good start too. We do not have late reports on just how many they have,

• • • • •
**A tight fisted dahlia grower
 may not have many friends. Also
 he is less likely to need them.**
 • • • • •

but the dahlia people in these areas are energetic and enthusiastic about their new projects and a fine planting and report for the November BULLETIN may be confidently expected.

May we request that the Superintendents and Committees in charge of the Trial Gardens make up and forward a complete report of varieties scoring 85 points or over and those scoring between 80 and 85 points, to the writer, with a carbon of same to Editor Lynn B. Dudley, *not later than October 1st, 1958*. This is essential if these reports are to be published in the November BULLETIN. We must have time to check and consolidate the five reports before publication. And the originators lose a lot of needed publicity if the descriptions and scores do not appear until February, which occurred in one instance last year. — Bert Pitt, Chairman T. G. Committee, 97-30 123rd St., Richmond Hill 19, N. Y.

A.D.S. Seedling Sweepstakes

Over forty dahlia societies will participate in these awards for new and outstanding seedlings in the fall shows from coast to coast in 1958. The winners in this competition are all eligible for the supreme awards of A.D.S. Gold Medals, providing the varieties are exhibited in at least three shows and receive the highest average score in its size class.

To win in any show a variety must score an average of 85 points or over. They are judged by from three to five competent judges who use the A.D.S. Bench Score card. Winners receive an A.D.S. Special ribbon award and the score sheets come to this committee for checking and averaging for the Supreme awards.

It is essential, if the originators are to receive their deserved awards, that the score sheets be forwarded to us immediately after the show. If they are not received within a week of the conclusion of the show, it will be assumed that there were no awards made.

All Branch and Affiliated Societies participating in the Sweepstakes have agreed, in writing, to abide by these rules, and the committee can make no exceptions, because undue delays or score sheets which are not properly executed, or if names of varieties and/or originator, or his address are omitted, might result in injustice to those whose reports are complete. The results of the competition and the names of the winners will be published in the November issue of the BULLETIN.

If the winners at your show, because of delays or improper reports, are not included in the final Seedling Sweepstakes report in the November BULLETIN and because of this, complaints are received by this committee from exhibitors (and this has happened) such complaints

• • • • •
**Discretion is what comes to a
 dahlia grower when he is too old
 for it to do him any good.**
 • • • • •

will be referred to the show management for answer. This drastic step, while regretted by the committee, must be taken to protect those whose reports are prompt and in accordance with the rules.

It is hoped that everyone concerned will co-operate fully. Please send the reports complete and carefully checked, the last day of the show. — Andrew Mulcahy, 20 Marshall Ave., Floral Park, N. Y.

LET'S PROMOTE the DAHLIA as a Flower

P. F. Kershishnik — Portland, Oregon

In looking over the popular garden magazines for the year 1957 I found many very interesting articles on roses, tuberous begonias, African violets, chrysanthemums, fuchsias, primroses, iris, pelargoniums, azalias, rhododendrons, trees, lawns and dahlias. I list dahlias last because that is just where they rank in magazine articles. I knew we did not find many articles on dahlias, but I was shocked to find there were about four on all the other popular garden subjects to one on the dahlia. And that is not all—the articles did not at anytime stress the various uses to which the dahlia is so well suited. And just who is to blame for this lack? Dahlia growers, and both amateur and commercials must take the blame. The first for their passion for the two day dahlia show and the latter for faulty or little advertising.

In the most recent issue of "The Pacific Dahlia," the official organ of the Pacific Northwest Dahlia Conference, I found that many of our regional growers had not advertised. To me this is lack of wisdom. Unfortunately unless a grower gets fifty dollars worth of business for every ten he spends for advertising he may feel cheated. The old and excellent slogan, "It Pays to Advertise," did not refer to a single ad. It is repetition that does the job, and seeing a firm's name again and again is what fixes it in the mind of the reader. And how he advertises his product is of paramount importance.

That is where many commercial growers fail. How many of them tell what can be done with dahlias besides growing them for the show? Good exhibition blooms! There are many more gardeners who do not exhibit in any show than there are who do. This is the part of the gardening world that we need to reach. Some of the commercial growers plant bedding dahlias where they show to the best advantage at their places of business. Others plant borders of one variety for mass effect. They know that few of our gardeners grow any plant material solely for cutting. It must serve as a "decoration" in the garden and be useful for the same purpose in the home.

What flower is more suitable for this purpose than the dahlia, with its various sizes, types and colors? Why not advertise this wonderful attribute? Tell the gardening world how a dahlia can be used as a bedder and what varieties are especially fine for this purpose. The dwarf singles, such as Top Mix, Bonnie Esperance, and Bambino are most attractive as bedding dahlias and are fine for small arrangement. We should never overlook

the vast possibilities of the Coltness hybrids, one of the loves of the landscape gardeners. Why not advertise them in the garden sections of your local papers?

The BB dahlias are fine for use in the landscaping scheme too. I use the fiery red semi-cactus, Temple Fire, for a mass planting—(eight plants)—in front of a green lath fence with the lobelia "Blue Gown" for ground cover. It appeals to all who see it and almost all of them want to know where they can buy it. For a focal point, and equally admired by visitors, is the collarette "La Cierva." These are only two of the many dahlias that I have used for accent points in my small garden, and I know that colored slides of such plantings and of pleasing color combinations for effective plantings are valuable in selling dahlias. One of our local growers uses this method to excellent advantage. The customer can see, in color, what a planting of even a few dahlias, wisely chosen, can do for his garden.

Many of our commercial growers put out fine dahlia catalogues with excellent
(Continued on following page)

Let's Promote the Dahlia (Cont'd)

cultural instructions. The amateurs should advise their gardening friends to send for these and READ them. By the same token commercial men should recommend various color combinations in certain types, sizes and colors that would be effective as a garden decoration and as cut flowers also. These could come under the heading of the well known collections. Just why a "collection" has to be a certain number of plants, all different, is beyond me. Color in a mass is more eye catching than the same number of plants in many different colors.

The landscape gardeners want low growing varieties that bloom heavily and require a minimum of staking. The florists need miniatures and pompons in pink, yellow, bronze, red and white, with the miniatures under four inches. Let's advertise the dahlias that meet their needs and we'll find the dahlia enjoying the popularity it deserves.

And the dahlia shows!! An institution that promotes the dahlia for exhibition alone. The shows fill a need for they are the places for members to demonstrate the very fine blooms they can produce in their particular societies. But for the purpose of advertising the versatility of the dahlia they are abject failures. I know because I have been one of these exhibitors for over a quarter of a century. During that time the shows have shown little, if any improvement and the dahlia has not made any startling gain in popularity as a garden flower. Other flowers have forged ahead and it has been advertising of their uses in the garden that has done it. In the last two years our local dahlia organization has spent \$1200.00 on two shows with an attendance of less than 5000 at the two shows. And this in a city of 450,000 population!

Visitors Are Welcome

to our Gardens to see such undiscriminated seedlings as Cecil M., Mr. H. T., Newlywed, John C. Hart, The Chief and Russ. Also unnamed seedlings of such Originators as Anderson, Kovar, Lloyd, Minor, Roberts, Roloff and Whittaker.

Ruschmohr Dahlia Gardens

38 Vincent St., Rockville Centre, N. Y.

A flower show to be a success must feature more than one kind of plant material. This has been proven by the large crowds that the other shows draw. One of the big flower shows in California features dahlias, fuchsias, tuberous begonias and roses. Flower lovers flock to see it and leave it filled with ideas of what is new and best in many flowers.

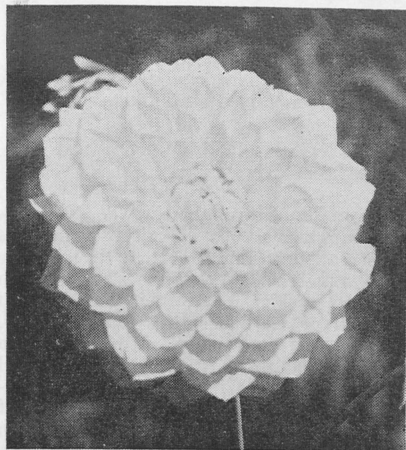
Would show gardens in the public parks be of more value than the dahlia show alone? Such gardens would be open to the public for months instead of two days. Rose gardens draw thousands of visitors yearly so why not dahlias too? They would be able to see the dahlias growing, judge their heights, see the various types, sizes and colors. Here the dahlia could advertise itself. (Editor's Note: A fine example of this sort of Dahlia Display Planting is that by the Park Department of Oakland, Calif., in Lakeside Park. This is in conjunction with the A.D.S.-San Leandro Dahlia Society Trial Garden. Besides nearly 100 seedlings on test there this year, there is a planting of 2800 hills representing some 400 varieties. Over 80,000 people visited this garden in 1957, and saw dahlias of every type, size and color as Mr. Kershnik envisions.)

This article was not written to stir up a controversy, but to bring the attention of all commercial growers and the members of the dahlia societies, our failure to put the dahlia out in front with the other popular garden flowers. In all its uses, sizes, types and colors, and the long blooming season the dahlia has, it is deserving of far greater popularity than it now enjoys. We must give before we get! Give of our time and energy to tell the gardening public what they have been missing in not growing and using dahlias. It is up to us who love the dahlia and anything that we do to make it more popular will be to its everlasting glory!

Charles Garrity Died June 17th

The Father of the San Leandro Dahlia Society has passed to his rewards. And if there are any dahlias growing in Heaven, Charley will be there at digging time passing out roots to the other angels, for their gardens.

Charles was born in Scotland 85 years ago and spent the first five of his working years as an Apprentice Nurseryman in England. One of his staunch friends, Dr. Julian Brandon, Jr., sends us the follow-



Oguerita — "B" F. D. Lt. Blend

This 7 inch "B" size won an A.D.S. Certificate for its originator, H. Pope, Vice President of the San Leandro Dahlia Society at the Pacific Trial Gardens, Lakeside Park, Oakland. Address 3200 Liberty St., Alameda, Calif. (Photo by L. E. Sanford)

ing facts about Charley, which he will use in the August issue of The West Coast Dahlia. "Charley liked to travel and really see the world, and he served in the Boer War. Before that, he had been head gardener to titled folk in England. He twice migrated to Canada and from there to Australia and New Zealand, where he lived for some time, and worked again as a gardener.

"His first trip to California from Australia saw him employed in San Francisco by a large nursery. He knew his plants and lived for them. In 1925 he exhibited dahlias at the first San Leandro Dahlia Show. He had grown dahlias for several years prior to this and was persuaded to show them by N. W. Armstrong of the San Leandro News, who so admired Charley's skill in growing fine dahlia blooms that he wrote a lengthy sketch of Garrity's life for his paper. Another of his admirers was Dr. Luther Michael, who prevailed on him to move to San Leandro and raise dahlias there.

"In 1933, the late Governor James Rolph of California invited Garrity and his youngest daughter Pat, to attend the National Banquet honoring the Governors of 48 states. Little Pat was Queen of the evening. Garrity enjoyed the friend-

ship of not only dahlia growers in the Bay Area, but he enjoyed the friendship of many botanists of note, including professors from the University of California and other universities. He worked for the love of flowers. Profits were never considered. He gave roots to more people to get them started in dahlias than any man in the state. He appeared before many flower clubs and women's garden organizations and his services were in demand as a judge all over California.

"Old age overtook 'The Judge,' as he was known among his many friends, last year, and he and Mrs. Garrity, who survives him, went to live at the Foresters Haven, Pacoima, Calif., many miles away from the place he was happy to call home for so many years. He was buried in the Village Cemetery at Burbank in the San Fernando Valley."

Editor's Note: We corresponded with Charles Garrity for over 25 years, and only met him personally in 1936 when we visited our daughter Doris and family in Mill Valley. R. E. Harter of Alamo, who we also met for the first time, asked us whom we would like to visit and without any hesitation we replied, Charles Garrity. We talked with him and took his picture. At 85 years, despite his failing health, he was the embodiment of all that I had pictured him through correspondence. And at 87, he planted dahlias at the Foresters' Home which we will never see bloom. This spring, he sent me a box of seed which he said he had intended planting. I have over 60 fine plants, every one of which, when it blooms, will remind me of this grand man, one of the world's truly great dahlia growers and one of the most beloved by all the dahlia growers who knew him.

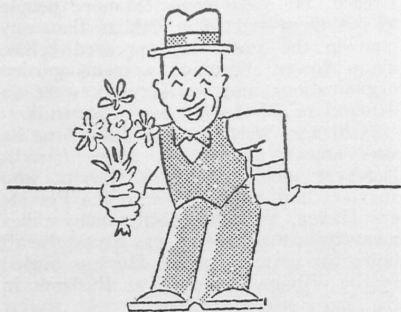
NEW DAHLIAS for 1959

**See Them at the Shows
Very Interesting
Most Promising
Potential Champions**

**PENNYPACK
Stanley Johnson
Cheltenham, Pa.**

DAHLIA PEOPLE

Here, There and Everywhere



First letter in two years from Col. Richard Eddy says: "Have been in the Naval Hospital in San Diego (Ward 26-6A) since Decoration Day. Same old trouble, Thrombophlebitis of right leg; then clot in arm, which broke loose and caused lung embolism with pleurisy. Otherwise am Okay. Have only about 400 dahlias planted. Lost most all my stock through rot. Miss many of my old favorites, or would if I was home to see them. Difficult to write, Remember me to all the would be dahlia experts in the East.

Another well known dahlia man, Herbert O. Aburn, secretary of the Baltimore Dahlia Society, was reported to be in the hospital there on June 9th. Conrad Breiger, who attended the A.D.S. executive meeting on July 26th, from Baltimore, said that Mr. Aburn was still there, as far as he knew. We're sorry to hear

that Herbert is having such a bad time. Hope he recovers soon.

From the Birmingham, Ala., News — "Birmingham's Mrs. H. C. Rike has added another laurel leaf to her crown. She was recently chosen "Garden Club Woman of the Year," by the Western Council of Garden Clubs. She received, at the state convention of this group, a life membership in the National Council of State Garden Clubs. Donor was Council No. 5 of the Alabama Society of Flower Show Judges. Mrs. Rike is an authority on small dahlias, and is also a nationally accredited flower show judge." (Editor's note: We are not surprised at the honors which have come to Mrs. Rike. We congratulate her. And we could add to her laurels. She is a perfect hostess and an accomplished cook, particularly with bean pot beans. She and Dr. Rike royally entertained the visitors at the Southern Dahlia Conference on several occasions, one of which yours-truly, truly enjoyed back in 1954.)

Paul Hale, Assistant Editor of The Dahlia, Central States official publication, and the author of the most interesting story on transporting dahlia blooms by car 500 miles to exhibit, in this issue, writes on July 2nd, "Well here I am all piled up in my hospital bed with an acute kidney infection. The only good thing about this, is that I am getting caught up with my dahlia correspondence. How is "Nita" doing for you? "Nita" is Paul's deep pink color sport of "Juanita," the South African purple B, size straight cactus, which will be introduced in 1959. Paul just can't lie quiet in that hospital bed. He has to be writing dahlia stories to be of help to other dahlia exhibitors.

John C. Metzger, of Irvington, N. J., has a flair for publicity. With Mrs. Metzger he does a lot of traveling. The latest card received from them came from Montreal. One before that from Dallas. But it's just too much for us to record all their journeys in a quarterly magazine. The next card will probably come from San Diego, Calif., in October, after the dahlia shows. But what capped the publicity climax was a clipping from the Newark News, saying that John had been

Why Not Visit

Our Garden in September

Also see our display at the

A.D.S. AIRPORT SHOW

Sept. 13 and 14

And If You Visit the Trial Gardens at Farmingdale, L. I., Watch for the Seedlings of

PARRELLA

DAHLIA GARDENS

3380 Ely Ave.

Bronx, N. Y.

named "Gardener of the Year" recently by the nationwide competition of the Eveready Garden Products. The selection of club winners was based on a competitive 100-question examination, designed to test gardening knowledge. It did not say how much insecticide that John had won. But he got the publicity anyway. And this notice too.

Lynn B. Dudley has a project of raising Botanic Dahlias to try to recreate some of the early crossing of the dahlia species which Francisco Hernandez found growing in the gardens of the Aztecs in 1540-50. On June 18th last he gave a lecture and showed colored slides of some of the results of these tests to members of the Horticulture Society of N. Y., at the Essex House, N. Y. In a letter dated June 26th, Richard B. Farnum, Executive Secretary of the Society, wrote: "I think you should have in your memory book, if you wish, a formal letter from the society telling you officially that your lecture was the best attended of any straight horticultural subject matter lecture which we have ever had in my experience. It was not only well attended, but enthusiastically enjoyed. There were well over 200 people present which is about as much as we ever get in June. Your talk was not only appreciated for itself, but was a help to our June Flower Show."

• — • — • — • — • — • —
If you don't have all the new dahlias you want, be thankful for the ones you don't have that you didn't want.
• — • — • — • — • — • —

New Handbook on Gardening in Containers

All the tricks and know-how for growing plants in anything from a window box to a roof garden are explained in great detail in the 76-page Handbook titled *Gardening in Containers*, just published by the Brooklyn Botanic Garden. This book was released in conjunction with the Garden's gold medal winning exhibit demonstrating the use of container-grown plants, staged at the International Flower Show in New York's Coliseum.

Container culture of plants has extended far beyond the window box stage in recent years. This Handbook is unquestionably the most comprehensive and up-to-date publication on the subject. *Gardening in Containers* is available from the Brooklyn Botanic Garden, Brooklyn 25, New York, for one dollar.

DR. HENRY COLE PARKER

Dr. Henry Cole Parker, 66, died July 3, 1958, at his home, 6142—30th Street, N.W., Washington, D. C. He had been a patent attorney, practicing in Washington since 1928.

Born in Denver, Dr. Parker was a graduate of Kalamazoo College and earned his doctorate in chemistry at Clark University. He also held the degrees of bachelor of laws and master of patent law.

Dr. Parker, a member of Sigma Xi, honorary scientific society, combined his knowledge of chemistry with his career as a patent lawyer. His hobby was flowers, and he was a member of the American Dahlia Society for more than twenty years, and he was a charter member of the National Capital Dahlia Society, as well as numerous chemical and law associations.

Surviving are his wife, Elizabeth Weston; a sister, Margaret Ingham, of Redlands, California; and four nephews.

Dr. Parker was the fourth President of the National Capital Dahlia Society and served five terms on the Board of Governors of that Society. He was the Editor of the "Dahliagram" from January 1956 until January 1958 when, on account of his health, he was forced to resign the editorship. He was the originator of a number of outstanding seedlings, of which "Allways," "Lulu" and "Ted" are the most well known. Right up to the time of his death he took an active part in the affairs of the National Capital Dahlia Society. — From the "Dahliagram," Aug., 1958.

Dr. Parker had been a member and Vice-President of the A.D.S. for more than twenty years and rarely ever missed an A.D.S. show up to 1957. His last visit as far as we can recall was at the January 1956 A.D.S. Annual Meeting where he made a few remarks in answer to complimentary remarks about his work as Dahliagram Editor by Leo Pollak. We will remember him as a fine example of a true Dahlia Gentleman. — Editor.

Plan to Send Your Blooms By Air to the Metropolitan Air-Port Show, Newark, N. J. Sept. 13-14

The AMERICAN DAHLIA SOCIETY, Inc.

Organized May 10, 1915



"The Society is formed for the purpose of stimulating interest in and promoting the culture and development of the Dahlia; to establish a standard nomenclature; to test out new varieties and give them such recognition as they deserve; to study the diseases of the Dahlia and find remedies for same, and to disseminate information relating to this flower; to secure uniformity in awarding prizes at flower shows, and to give exhibitions when deemed advisable."

DR. BRUCE PREAS, *President*
387 Merrick Rd., Rockville Centre, N. Y.

EDWARD B. LLOYD, *Secretary*
10 Crestmont Road, Montclair, N. J.

HENRY A. OLSEN, *Treasurer*
48 Clement Ave., Elmont, N. Y.

LYNN B. DUDLEY, *Editor, Bulletin*
25 Irving Pl., New Rochelle, N. Y.

Things to Think About

There have been no complaints received from any part of the country about lack of rainfall to help dahlias grow this season. Indeed some have said they had too much rain. Here in the East we got over 4 inches of rain in May and so far nearly 5 inches in June and July. Plants have made a steady growth. There should be no derth of blooms for the shows, come this fall.

The Editor has been the guest of two New Jersey outdoor suppers recently. The

first one on June 7th was at the home of Mr. and Mrs. Harry Dreyer at 431 Lincoln Rd., Ridgewood, N. J. The other was at the home of Mr. and Mrs. Richard Meyer at 165 Harcourt Ave., Bergenfield, N. J. And both of these were gatherings of the Bergen Cnty Dahlia Society; likewise both were the epitome of cordiality as well as offering a bountful supply of excellent food. That is the advantage of being a member of a local dahlia society. In the smaller groups there is more comradeship than is possible in the larger societies, such as the A.D.S. The members can get together oftener, and share more culture experiences than in a Metropolitan society, the members of which are widely separated and have greater traffic problems. If possible, growers living near a big city, should belong to a small society as well as the larger group. The people who grow dahlias all have common problems and they like to get together often to discuss them no matter what group they join. They like to eat too. And we thank the Dreyers and the Meyers for inviting us to these gatherings.

We are in receipt of the "Dahlia Year Book," published by the National Dahlia Society of Great Britain, from its Editor, G. F. Drayson. It is a fine edition, even surpassing in dahlia information most of the previous editions. It contains some 130 pages and cover besides 27 pages of advertisements. Reports of the winning varieties and exhibitors at the N.D.S. Annual Show in 1957 are included, as well as a list of judges. Editor Drayson has given the A.D.S. permission to reprint any of his articles.

Send Lists of Winning Varieties In Your Show to Diffenderffer

Charles M. Diffenderffer, Chairman of the A.D.S. Classification Committee, requests all Show Managers and/or Classification Committees to send their lists of winning varieties and the names of the new introductions which win in the seedling classes to him as soon after the show ends as possible.

It is from these lists that the new Joint Classifications for 1959 are compiled. Also if it is found that any variety, now on the list, is no longer shown locally, please advise the Chairman that a deletion is recommended. President Preas also reminds the officers of all Branch and Affiliated Societies that only by their co-

operation in this furnishing of data about winners, can the Joint Classification List be functional and of greatest service to all groups.

It is planned to make a separate classification in 1959 for the "BB" Small Medium, 4" to 6" group. A report of all winners in this class is essential and particularly requested. Send reports right after show ends to Charles M. Dffen-derffer, 2204 N. Charles St., Baltimore 18, Md.

Dr. Charles Connors Adds Comment on the John Harding Dahlias

June 13th, 1958. "The May BULLETIN received and as usual you did a good job. The news of John Harding's death most regretful, because as you stated, he was responsible for the 'break' toward the larger decoratives, working of course, with his employer, Judge Marean. I had it straight from John that the variety responsible for the break was "Hortulanus Fiet." But when I asked him what the pollen parents had been, he told me that they were the weak-necked varieties so common at that time. One of his introductions, Mrs. I. De Ver Warner that so many of us grew, was put out to the public by John Sheepers in 1920. It, incidentally, was the second one of that name. The first proved to be 'kluck.' What has maybe been forgotten was that Wm. Waite used a Harding-Marean variety, Agnes Haviland, to breed the greatest money making dahlia of all time, Jersey's Beauty. It is still, after 30 years, the best commercial dahlia. — Charles H. Connors, 115 N. 6th Ave., Highland Park, N. J.

Why Not the Dahlia for the National Flower?

As you perhaps know, there seems to be quite a sincere effort by various senators and representatives to at this time adopt a national flower. There has been quite a lot of discussion in our local papers, and to acquaint you with some of it I am enclosing copies of a couple of articles in these mid-western papers.

I would like to call your attention to the copy from the Bismarck Tribune June 5, in which they printed an article by Hal Boyle, from AP, recommending the adoption of the dandelion as the national flower.

I am also enclosing one from our last night's Minneapolis Star, showing where

Senator Paul Douglas (Illinois) is making a sincere drive to make the corn tassel America's national flower.

To me, both of these seem rather fantastic, and I believe there should be a good possibility of getting the dahlia at least nominated. With all the dahlia societies scattered over the entire United States, and if through the BULLETIN you could urge all these societies to circulate a petition amongst their members, we could really bombard our senators with letters, as well as petitions, in true lobbyist fashion.

I am positive that there would be no organization such as ours that could give the backing to a flower that the dahlia societies can.

Please give this your consideration.

Sincerely,
T. C. Solem, President
Minneapolis Dahlia Society

Dahlia Grower: "Do you think I can make the woman I marry happy?"

Friend: "Well, at least she will have something to laugh at, and jaw about."

WEST COAST DAHLIA

A monthly magazine devoted exclusively to the dahlia, its culture and exhibiting. A down to earth, easy-to-read publication.

NEW RATE

\$2.50 Per Year

12 Issues

Full of interesting information of equal value to novice or old-timer.

WEST COAST DAHLIA

DR. J. R. BRANDON, JR., Editor
3437 Gravenstein Hwy. So.
Sebastopol, Calif.

Nationwide Dahlia Society News

Closing Dates for Reports

Jan. 10 for Feb. issue

April 10 for May issue

July 10 for Aug. issue

Oct. 10 for Nov. issue

Please send Reports by the above dates if you wish them included in following issue.

ALSO — Make Them Brief.

AND — Typewritten.

LENGTH — Branches, 270 words, 45 lines of type — 5 inches. Affiliated, 180 words, 30 lines of type, or 3½ inches. (Count 6 words typewritten, as one line of 8 point type as printed in Bulletin.)

Badger State Dahlia Society News

With the blessing of the A.D.S. Trial Garden Committee and the full cooperation of the College of Agriculture of the University of Wisconsin our society has this year instituted a trial garden on the university campus. Dr. G. E. Beck of the College of Agriculture has been designated as superintendent of the trial garden, and the advisory committee from our society consists of Prof. C. L. Fluke, Max E. Freudenberg, Walter B. Senty, and Judge George R. Currie. Planting was completed before Memorial Day. We have eight seedling entries this first year: one from California, one from Illinois, and two each from New Jersey, Ohio, and Wisconsin. Under A.D.S. rules our trial garden must be operated on an unofficial basis for the first two seasons, but we are hopeful that it will receive official status commencing with 1960. There is much enthusiasm among our members for this project.

We regret the conflict between the dates of our show and the Mid-West show at Minneapolis, both being scheduled for August 31st and September 1st. Any visitors to the Mid-West show whose return journey may take them through Wisconsin on Monday, September 1st, are cordially invited to visit our show which will remain open until 9:00 p.m. that day. Our show will be held in the Community Center Building on Doty Street which is but one block from the state capitol building.

Dahlia Society of Alabama

The Dahlia Society of Alabama is off to a very good start for the 1958 season. We have had excellent weather for planting and replacements have been at a minimum.

During May, some two thousand plants changed hands among our members and everybody is pointing up for the Southern States show which will be held in Chattanooga this year on September 27th and 28th.

Our own show will be held the previous week, September 20th and 21st, and the Georgia show will be held the week following the Southern States. All three clubs will be strongly represented at all three shows and we invite further competition from anywhere in the country.

In line with our planned social activities, the first of our several bingo parties were held the latter part of June and a picnic in July.

Mr. A. H. West has been able to arrange some very interesting programs for our regular monthly meetings. These have been based around soil preparations, propagation, planting, culture and judging. We thoroughly believe in "disseminating knowledge pertaining to the dahlia."

This news item would not be complete without mention of the fact that our Mrs. H. C. Rike was not only chosen "Garden Club Woman of the Year" by the Western Council of Garden Clubs but now she has been given a life membership in the National Council of State Garden Clubs. We are truly proud of Mrs. Rike's accomplishments and the fact that she is one of us. — G. E. Alderson, 1218 Irving Road, Birmingham 9, Ala.

Long Island Dahlia Society

The fourteenth Annual Dahlia Show of The Long Island Dahlia Society will be staged at the Mid-Island Shopping Plaza, Hicksville, N. Y., on Saturday and Sunday, September 21st and 22nd. Show Chairman Mr. Robert Pape has requested that all entries be in place by 12:00 noon on Saturday, September 20th. The most direct route to the shopping center is east on Northern State Parkway to exit thirty-five (35), turn right or south on North Broadway. Proceed one half mile, the center is on the right hand side. Sections lettered G and H are the near-

est part of the parking field to the show site.

Trial Grounds Chairman Mr. Joseph Huck is most happy to announce that seventy-six seedlings were sent to the trial grounds at The Farmingdale Agricultural & Technical Institute this year and all are doing very well. Judging will start about the middle of August.

The Field Day or Dahliarama will be held this year on Sunday, August 31st, at 2:00 p.m. at the trial grounds, Farmingdale, N. Y. All dahlia fanciers are extended a cordial invitation to attend and enjoy this day as guests of The Long Island Dahlia Society. — C. D. Francis, Sec'y., 51 Willis Ave., Syosett, N. Y.

Baltimore Dahlia Society

Plans have been completed and special details arranged for our 33rd Annual Show which will be held on Saturday and Sunday, September 20th and 21st, 1958, in the Auditorium of the Community Building at Eastpoint, Eastern Boulevard and North Point Road, Baltimore, Md. President Louis Gill has appointed Arnold Hens as Show Manager and a finer selection could not have been made. Arnold and his committee have planned a most excellent arrangement of the tables as well as the staging for baskets.

Charles Diffenderfer, Chairman of Judges, reports the acceptance of invitations from the country's leading judges and we are most happy to welcome them. Trophy Chairman, Mrs. John Sherwood, has done an excellent job in securing some very fine silver trophies along with many prizes which will be awarded. The Baltimore Dahlia Society wishes to extend an invitation to all growers, there being classes for growers or 75 plants or less, 75 to 150 plants and open to all with cash prizes or trophies in each class with Sweepstakes in each section. For copy of Show Schedule or information contact — Herbert O. Aburn, Secretary, 6425 Blenheim Road, Baltimore 12, Md.

San Leandro Dahlia Society

The 26th Annual Dahlia Show of the San Leandro Dahlia Society will be held on Saturday and Sunday, August 30 and 31, at Bancroft Junior High School, Bancroft and Callan Streets, in San Leandro. The first day it opens at 3:00 p.m. (after the judging) and will remain open until 10:00 p.m. The second day the show will remain open from 10:00 a.m. until 6:00 p.m. — Lionel E. Sandford, 955 Stannage Ave., Albany 6, Calif.

Visitors Welcome

Visit us at Dahliadel in late September or early October. Our fields are so arranged that you can drive thru and see nearly 20 acres of outstanding dahlias. A real array of colors and types, many new Australian varieties, and an acre of Seedlings.

If insects are bothersome we still find no better control than our recommended combination spray of BHC, Hexate, and Linck W A with Aramite added for red spider control. See our Cultural Instructions.

Catalog on request if not already on our list.

NOW AVAILABLE

DAHLIADEL POCKET EDITION of the HORTICULTURAL COLOUR CHART contains 175 color blocks arranged in the spectrum order, primarily for the American Dahlia Society with a definite color range on each set of pages. Autumns have been added to make the color range more complete. It is a complete chart for other flowers with the addition of violets and the omission of greens and a few blues.

Darker shades are in columns to the right with lighter tints to the left. Pages are covered with Cellophane and in a standard 6¾ x 3¾ binder. **Pocket Edition in Loose Leaf Binder**, including 50 New Dahliadel Record Sheets, \$15.00.

WARREN MAYTROT

DAHLIADEL

Vineland N. J.

The Minnesota Dahlia Society Has Made Big Plans for the Mid-West Show



Fabulous 10-Million Dollar Southdale Shopping Center
Near Minneapolis, Where Guests of the 1959
Mid-West Show Will Lunch, Sat., Aug. 30

All visitors to the Mid-West Conference will be guests of the Minneapolis Dahlia Society at luncheon in Donaldson's Southdale Minnesota Room, at 11:30 a.m. August 30th. This will be the half-way mark for the Twin City Garden Tours, preceeding the show.

Buses will leave the Mid-West Conference headquarters at the Leamington

Hotel Saturday morning, to visit our North Central Trial Garden at the University of Minnesota Farm Campus, and then proceed to visit other gardens. One bus for the lady visitors will leave later for the shopping center where they may browse around in the 75 shops including Donaldson's and Dayton's. Wives of our own members will be on deck to greet and conduct the lady visitors on this tour. All buses will leave the shopping center promptly at one o'clock and continue with the garden visitations, returning the guests to the hotel early, as Saturday evening is open to see the town. (I suggest the Cinerama as a great place to go among others.)

The Conference business meeting will take place at 5 p.m., Sunday, followed by the annual banquet at 6:30 in the Leamington Hall of States. A program interesting to all has been arranged. The principal speaker of the evening will be Lynn B. Dudley, of New Rochelle, N. Y., Editor of the A.D.S. BULLETIN. Mr. Dudley is a Past President of the American Dahlia

HOLLAND'S

most complete list of 1959 novelties and choicest varieties from all over the world.

Elaborate descriptions of over 600 varieties in our

New Catalogue for 1959

Please apply for it and get full information about import and please write air-mail.

**FA. D. BRUIDEGOM
BAARN, HOLLAND**

Society, was for 19 years tester and writer of the Eastern Flower Grower Dahlia Honor Roll and for some dozen years A.D.S. Chairman of its Trial Committee. Because he knows both Dahlias and Dahlia people, we may expect something special and interesting in his talk.

Again may we cordially invite delegates from all of the seventeen member Societies and dahlia people from all over the United States. We will make your visit remembered with pleasure.—T. C. Solem, President, 7100 Oakland Ave., Minneapolis 23, Minn.

The Rochester Dahlia Society

The Rochester Dahlia Society is making plans for its 19th annual dahlia show. It is to be held at the Rochester Museum of Arts and Sciences on Sunday, September 21, 1958, from one o'clock to nine. Mr. William Stonewall is chairman of the show.

We look forward for a very fine show. Guests are always welcome. Rochester, "the flower city," is proud of her reputation and you may be sure this show will have no equal.

We are sorry to report the loss of one of our charter members, Mr. Louis Eckel, who passed away last February. Louis Eckel had served as an officer of this society and had always willingly served on show committees. You could always look to him for kindly advice and valuable assistance. His death is a great loss to this society.

Under the capable guidance of Messrs. Phillip Kimmell, Robert Connel, Frank Eyer, the Rochester Dahlia Society is conducting a series of lessons on The Judging of Dahlias. Dr. Ward H. Cook's book is our text. The lessons will be both theory and practical in scope. There is much interest shown and I am sure we will gain much in our knowledge of "the Dahlia."

We wish all dahlia growers a good season. Just the right amount of rain at the right time, plenty of sunshine, and no disease or insect trouble. — Very sincerely yours, (Mrs.) Celia D. Tulley, 985 South Ave., Rochester, N. Y.

Greater Philadelphia Dahlia Society

On Thursday at 8 p.m., June 19, 1958, a general meeting was held by the society at the home of our secretary, Mrs. N. L. Wright, calling on the membership for

their viewpoints regarding society activities.

Members elected to be in charge of show and show catalogue are: President Stanley Johnson, Frank L. Deichler, Jr., Geo. M. Bowles, Mrs. N. L. Wright and Miss E. Tschopp. President Johnson appointed Mrs. N. Myers chairman of arrangement section of the garden club division, assisted by Miss A. Law.

The 1958 show will be held at WCAU Radio & Television Center, City Line and Monument Ave., Phila., Pa., September 20th and 21st. Show brochure available by contacting the secretary, Mrs. N. L. Wright, 6926 Ridge Ave., Phila. 28, Pa.

The society extends an invitation to dahlia growers and friends to attend our 1958 show. — Mrs. N. L. Wright, 6926 Ridge Ave., Philadelphia 28.

Seattle Dahlia Society

The "baby" society of the Northwest will hold its second Annual Dahlia Show at the Green Lake Fieldhouse, 7201 East Green Lake Way, Seattle, Washington, September 13th and 14th. The Show Chairman is George McCrea, 6845 35th Avenue N.E., Seattle 15, Washington.

We welcome any visitors to our Show and to any of our meetings which are held on the second Wednesday of each month at the Arboretum Clubhouse, University of Washington, at 8 p.m. Since many of us are still in the "learning stage" we would appreciate receiving any helpful hints, copies of show schedules, etc., from other societies.

The names and addresses of the 1958 officers are: President, Ira Porter, 2241 6th Ave. So., Renton 2, Wash.; Vice-President, Clarence Nickel, 3520 East 110th, Seattle 55, Wash.; Treasurer, Mrs. Ann Teul, 2708 East Denny, Seattle 25, Wash.; Secretary; Mrs. June Collins, 11249 Fremont Avenue, Seattle 33, Wash.

BALLEGO
LEIDEN HOLLAND

**Apply for Ballego's
Well-Illustrated Catalogue
(Ask for it by Airmail)**

Over 600 varieties from all over the world listed in big Catalogue. They represent every color and type yet known. Send for Complete Information re Importation.

FOR ANY CLASS-A WINNER

Fresno Dahlia Society

Our Dahlia Show will be held in the Fresno High School Cafeteria on Echo and Palm Avenues, on September 21st, 1958. We will also have the Home Achievement Medal and the American Dahlia Society Medal for Seedlings.

The following committees have been named for our show: Show Chairmen: Roy McLeod, J. W. Chuman, Wesley Wipf, Dr. Wm. Kane and R. W. Richter; Judge: R. W. Richter; Flower Arrangement Judge: Mrs. Agnes Hughes; Flower Arrangements: Mrs. J. F. Neel, Mrs. Grace Furr and Mrs. Eva Hill; Publicity: Mrs. Arthur Schmall; Prizes: E. E. Weymouth; Hostesses: Mrs. Agnes Hughes and Mrs. J. F. Neel; Property: J. W. Chuman. — (Mrs.) Ellen W. Moore, Secretary, 2634 No. Fruit Ave., Fresno 5, Calif.

National Capital Society

National Capital Dahlia Society will hold its twenty-third Annual Dahlia Show at U. S. Botanic Gardens, "at the foot of Capitol Hill," Washington, D. C., on September 27 and 28, 1958. — Carl R. Greimel, 6369 Ridge Drive, Washington, D. C.

North Jersey Dahlia Society

The highlight of the North Jersey Dahlia Society's annual flower show has always been the naming of a seedling dahlia for a well known personality and this year the name selected will be "Lou Costello," Paterson's own outstanding entertainer in both movies and TV.

Any person having seedlings eligible for this class will be welcome to compete for this honor and will be welcome to exhibit at our show. Programs are now ready for distribution. Anyone desiring one, may

have same by contacting the secretary.

The family outing will be held this year on Sunday, August 17th, and all members are invited to attend and enjoy a day of fun and food with the other members, and a good time to boast about the big dahlias that will appear at the fall show.

A new addition to the society's props will be a banner, the society colors to be shown this year for the first time at the fall show. — E. T. Church, 1480 Alps Rd., Wayne, N. J.

Field Days at the Trial Gardens

"Dahliaday" in Lakeside Park Dahlia Display Gardens and A.D.S. Trial Garden, Oakland Calif., August 24th from 10 a.m. to 5:30 p.m. Judging demonstrations, followed by Potluck dinner, but no speeches. R. E. (Pete) Harter, President of the San Leandro Dahlia Society, presiding.

"Dahliarama" or Field Day at the A.D.S. Trial Gardens at the L. I. Agriculture Institute, at Farmingdale, N. Y., Sunday, August 31. The affair starts at 2:00 p.m. A Potluck dinner will be served in the "Grove" at 5:30. Joseph Huck, L. I. Dahlia Society Trial Garden Chairman, Presiding.

Field Day at the proposed North Central A.D.S. Trial Garden, located on the University of Minnesota Farm Campus will be held on August 30th, Saturday. The Minnesota Dahlia Society, host to the Mid-West Conference, Aug. 31-Sept. 1, will transport guests to the Trial Garden and to other local gardens, before lunch on Saturday morning. (See story on Page 20.)

Field Days will undoubtedly be held also at the Trial Gardens at Atlanta, Michigan State University and Ault Park, Cincinnati, but we have not been notified of the dates.

Message from Scotland

July 19th, 1958. Hi! there Mr. Editor: Having a grand time in my old stamping ground. Weather is fine and I am enjoying every minute of my sojourn here where the economical minded people of the world originated.

You would have a grand time here taking color pictures of the green clad hills and the old castles. I'm sending this picture of Edinburgh Castle. The view over the Princes Street Gardens to the castle up on its rock is beautiful.

I did not find any dahlias growing on the grounds and if I had done so, I couldn't have taken any pictures for the Bulletin. I forgot to bring my camera. Regards, George W. Fraser.

DAHLIAGRAM

\$2.00 Per Annum

THE NATIONAL CAPITAL DAHLIA SOCIETY of WASHINGTON, D. C., are now offering their monthly publication the DAHLIAGRAM to the general public at \$2.00 per annum with a minimum of 6 full pages of DAHLIA information.

SAMPLE COPY FREE — WRITE

Arthur S. Mason, Editor

3935 6 St. South, Arlington 4, Virginia

A.D.S. MEMBERSHIP BLANK

Use This Blank to Renew Your Membership
Or Help a Friend to Join

American Dahlia Society, Inc.
Henry A. Olsen, Treasurer,
45 Clement Ave., Elmont, N. Y.

Please (Renew) (Enter) my membership in the American Dahlia Society. Enclosed find (check) (money order) for \$4.00, of which \$3.00 is for the annual subscription to the Bulletin of the American Dahlia Society, published quarterly.

Name

Street No.

City State

Name and Address of a

Friend Who Might Join

Four More A.D.S. Exec. Meetings

There remain but four more A.D.S. Executive Meetings in 1958. These will be held as usual at the Park-Sheraton Hotel, 56th St., at 7th Ave., New York City, at 7:30 p.m. The dates are: August 22, October 17th, November 14th and December 12th. There will be no meeting in Sept. except the Metropolitan Show which will be staged in conjunction with the Port of Authority of N. Y., Inc., and with the New Jersey and the Irvington, N. J. Societies participating. All members of the A.D.S. and its Branch and Affiliated Societies are welcome to exhibit.

For Dutch Dahlias

WM. De RUYTER
of OEGSTGEEST, Holland
54 Dorpsstreet

Free on Application

New Illustrated Price List 1958-59
of Awarded Novelties and Selected
Standard Varieties of the World's
Best Dahlia's.

Guaranteed "True to Name"

The Garden Journal

is unique in that

it not only furnishes reliable cultural instruction on trees and shrubs, perennials, annuals, and bulbs, gives advice on chemical aids to gardening, on lawns, soils, and so forth, but also relates the history and romance of plants, their development, their economic as well as ornamental uses.

This "background" information broadens the gardener's knowledge of the plant world and enhances his appreciation and enjoyment of the plants in his garden.

Subscription price \$2.00 a year.
Outside continental U. S. \$2.50.

Send Your Order to

**THE NEW YORK
BOTANICAL GARDEN**

Bronx Park, N. Y. 58, N. Y.

The Name "Branch" Society

to be changed to

"Participating" Society

in 1959

The Executive Committee of the A.D.S. voted unanimously at its meeting on July 25th to eliminate the name "Branch" and call all such societies, which are co-operating with the A.D.S. to "stimulate interest in, and promote the culture and development of the dahlia" and which enter 20 or more of their members as members of the A.D.S., by the term, PARTICIPATING SOCIETIES.

The By-laws of the A.D.S. involved, with revisions to accomplish this change, will be submitted at the Annual Meeting, January 17th, 1959, for ratification. The revisions will be published in the November issue of this Bulletin, with explanation.

It is expected that all of the many societies now known as "Branch Societies" will welcome this much more descriptive term, because truly each of them do participate with the A.D.S. in its program for the general advancement of dahlia progress everywhere.